



Latitude House

OVAL ROAD, PRIMROSE HILL, LONDON, NW1

£2,200



Available for short term rental - Enviably located on the border of Primrose Hill & Camden, this stunning ground floor apartment comprises; two double bedrooms, master en-suite, spacious reception room with semi separate fully equipped kitchen, gorgeous contemporary bathroom, and a large patio garden to rear.

Close to the fantastic amenities of Camden with Primrose Hill & Regents Park just a short stroll away





Available for short term rental - Enviably located on the border of Primrose Hill & Camden, this stunning ground floor apartment comprises; two double bedrooms, master en-suite, spacious reception room with semi separate fully equipped kitchen, gorgeous contemporary bathroom, and a large patio garden to rear. Close to the fantastic amenities of Camden with Primrose Hill & Regents Park just a short stroll away

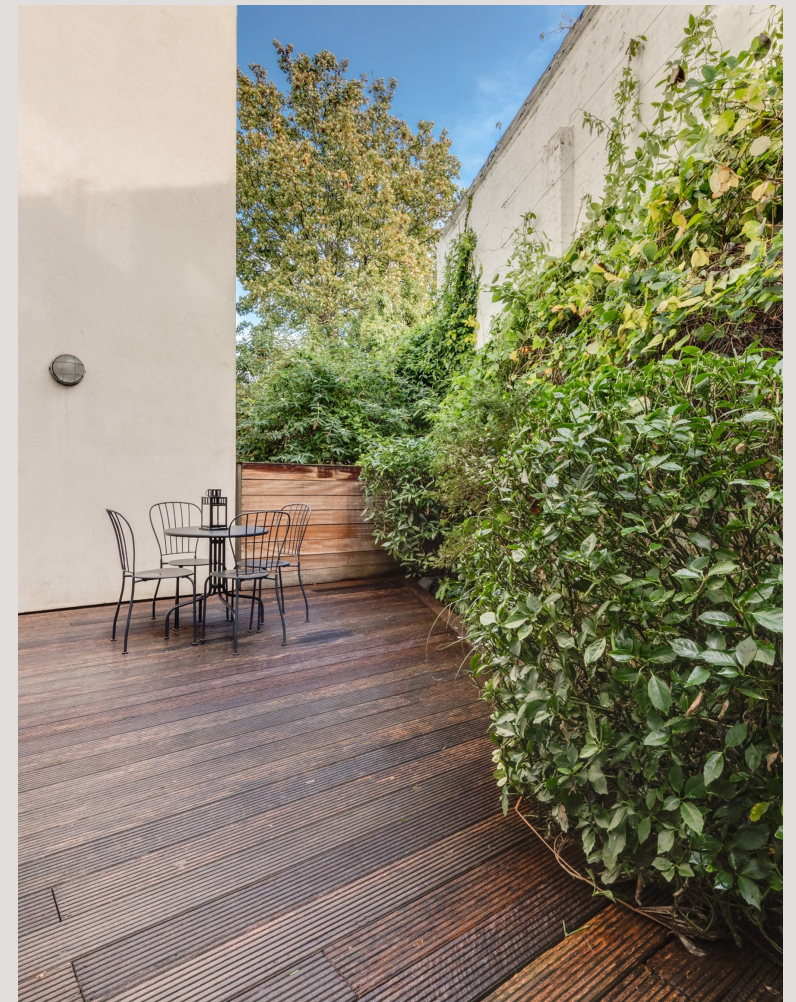




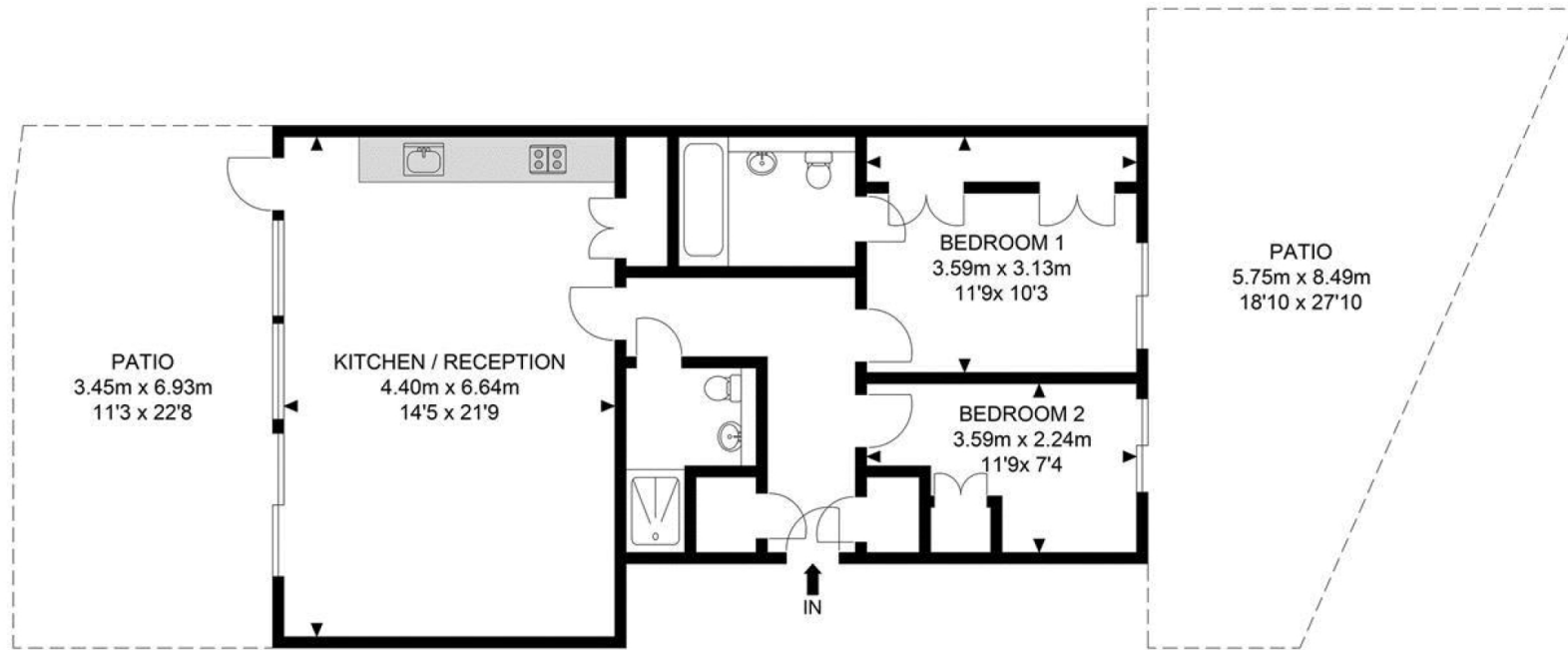




Scan for out video walkthrough



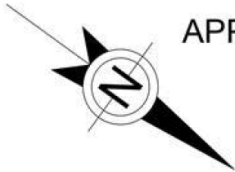
Latitude House



Ground Floor

APPROX. GROSS INTERNAL FLOOR AREA 726.77 SQ FT / 67.52 SQM

APPROX. GROSS INTERNAL FLOOR AREA INC. PATIO AREA 1338.70 SQ FT / 124.37 SQM



Whilst every attempt has been made to ensure the accuracy of the floor plan contained here, measurements of doors, windows, rooms and any other items are approximates and no responsibility is taken for any error, omission or mis-statement. this plan is for illustrative purposes only and should be used as such by any prospective purchaser. the service, system and appliances shown have not been tested and no guarantee as to their operability or efficiency can be given.

© SpacePhoto
Photography and Floor Plan

Particulars

Property

Latitude House, Oval Road, Primrose Hill, London, NW1
£2,200

Rooms

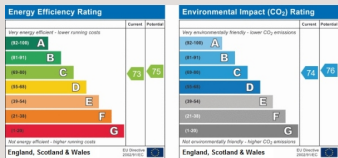


Features

- Front and rear terrace
- Located moments to Primrose Hill and Regents Park
- Seconds to restaurant, bars and transport
- Contemporary fittings

Information

Council Tax



Oliver Kent

oliver.kent@vitaproperties.uk
+4477 7274 0351



Scan for our website





T: +4420 7759 2199

E: enquiries@vitaproperties.uk

Disclaimer: These particulars are prepared as a general guide for prospective purchasers or tenants and do not constitute, nor constitute part of, an offer or contract. All statements, descriptions, and measurements contained herein are given in good faith and are believed to be correct at the time of printing, but any intending purchaser or tenant should not rely on them as statements or representations of fact and must satisfy themselves by inspection or otherwise as to their correctness. Floor plans and photographs are for illustrative purposes only and may not be to scale. The position and size of doors, windows, appliances, and other features are approximate. Anti-Money Laundering (AML): In line with the Money Laundering, Terrorist Financing and Transfer of Funds Regulations 2017, we are required to carry out customer due diligence checks. Buyers/tenants will be asked to provide proof of identity, address, and source of funds before a sale or rental can be agreed. Data Protection (GDPR): Personal information supplied to Vita Properties will be processed in accordance with the General Data Protection Regulation (GDPR). Your details may be retained for legitimate business purposes relating to property services. Full details of our Privacy Policy are available on request.

All rights reserved.