



Finchley Road
HAMPSTEAD, LONDON NW3
£1,250



Welcome to this exquisite three double bedroom garden flat, boasting an impressive 1573 sq ft of luxurious living space. Meticulously designed by top interior experts, this stunning property is nestled within a remarkable period conversion, ensuring a blend of classic charm and modern elegance. With its own private entrance, you'll step into a world of refined beauty.

The heart of this home lies in its open plan fully fitted kitchen, seamlessly flowing into a spacious reception room. This exceptional space leads out to a meticulously landscaped private garden, where you can unwind and enjoy the tranquility of nature. A utility room provides convenience and practicality, making everyday tasks a breeze.





Indulge in the lavish comforts of the master bedroom, featuring a breathtaking walk-in wardrobe and a contemporary ensuite bathroom that exudes sophistication. A second double bedroom awaits, complete with fitted wardrobes and access to another luxurious bathroom, offering both style and functionality. Additionally, a third double bedroom with fitted wardrobes provides ample space for guests or a growing family.

This remarkable property is offered chain-free, ensuring a seamless and stress-free buying process. Embrace the opportunity to call this exquisite garden flat your own, as it presents a rare combination of style, comfort, and convenience. Don't miss your chance to reside in a truly remarkable home that surpasses all expectations.

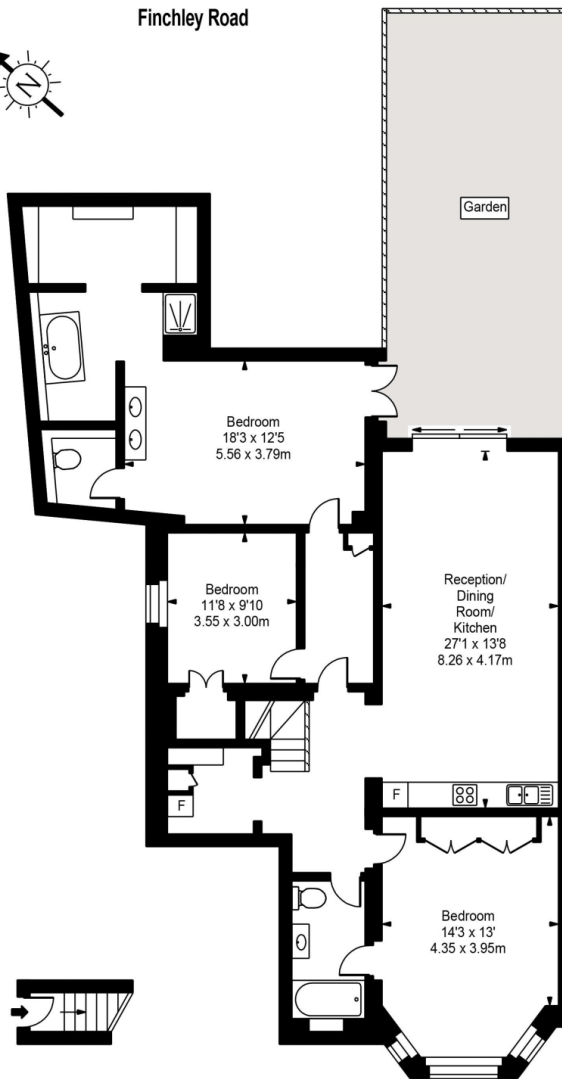








Finchley Road



Ground Floor
Entrance



Approx Gross Internal Area **1573 Sq Ft - 146.16 Sq M**

FOR ILLUSTRATIVE PURPOSES ONLY. NOT TO SCALE.

Whilst every attempt has been made to ensure the accuracy of the floorplan shown, all measurements, positioning, fixtures, fittings and any other data shown are an approximate interpretation for illustrative purposes only and are not to scale. No responsibility is taken for any error, omission, mis-statement or use of data shown.
Floor plan by www.bestangle.co.uk

Particulars

Property

Finchley Road, Hampstead, London NW3
£1,250

Rooms

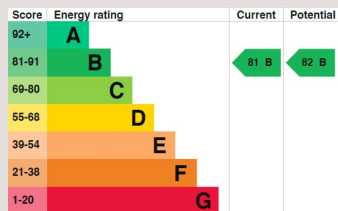


Features

- Private garden leading onto extended communal gardens
- Wooden floors
- Master with dressing room and ensuite
- Own Entrance

Information

Council Tax



Oliver Kent

oliver.kent@vitaproperties.uk
+4477 7274 0351



Scan for our website





T: +4420 7759 2199

E: enquiries@vitaproperties.uk

Disclaimer: These particulars are prepared as a general guide for prospective purchasers or tenants and do not constitute, nor constitute part of, an offer or contract. All statements, descriptions, and measurements contained herein are given in good faith and are believed to be correct at the time of printing, but any intending purchaser or tenant should not rely on them as statements or representations of fact and must satisfy themselves by inspection or otherwise as to their correctness. Floor plans and photographs are for illustrative purposes only and may not be to scale. The position and size of doors, windows, appliances, and other features are approximate. Anti-Money Laundering (AML): In line with the Money Laundering, Terrorist Financing and Transfer of Funds Regulations 2017, we are required to carry out customer due diligence checks. Buyers/tenants will be asked to provide proof of identity, address, and source of funds before a sale or rental can be agreed. Data Protection (GDPR): Personal information supplied to Vita Properties will be processed in accordance with the General Data Protection Regulation (GDPR). Your details may be retained for legitimate business purposes relating to property services. Full details of our Privacy Policy are available on request.

All rights reserved.