



Principal Tower

WORSHIP STREET, SHOREDITCH, LONDON EC2A

£9,900,000



A stunning duplex penthouse on the 48th and 49th floor of this modern building.

The penthouse comprises approximately 2885 sqft offering an open plan living/kitchen, 3 bedrooms with en-suite bathrooms and dressing rooms, a powder room, and two terraces.

Principal Tower overlooks the heart of the City of London and has easy access to five major transport hubs within walking distance of the development.

The development is located just a short distance from several transport links including Liverpool Street station, providing access to both Underground and Rail Services for commutes to key destinations.

It benefits from the residents' gym, spa, cinema, pool and 24-hour concierge.

With a city address, the development offers fast transport links and a wealth of cultural and culinary experiences.





A stunning duplex penthouse on the 48th and 49th floor of this modern building.

The penthouse comprises approximately 2885 sqft offering an open plan living/kitchen, 3 bedrooms with en-suite bathrooms and dressing rooms, a powder room, and two terraces.

Principal Tower overlooks the heart of the City of London and has easy access to five major transport hubs within walking distance of the development.

The development is located just a short distance from several transport links including Liverpool Street station, providing access to both Underground and Rail Services for commutes to key destinations.

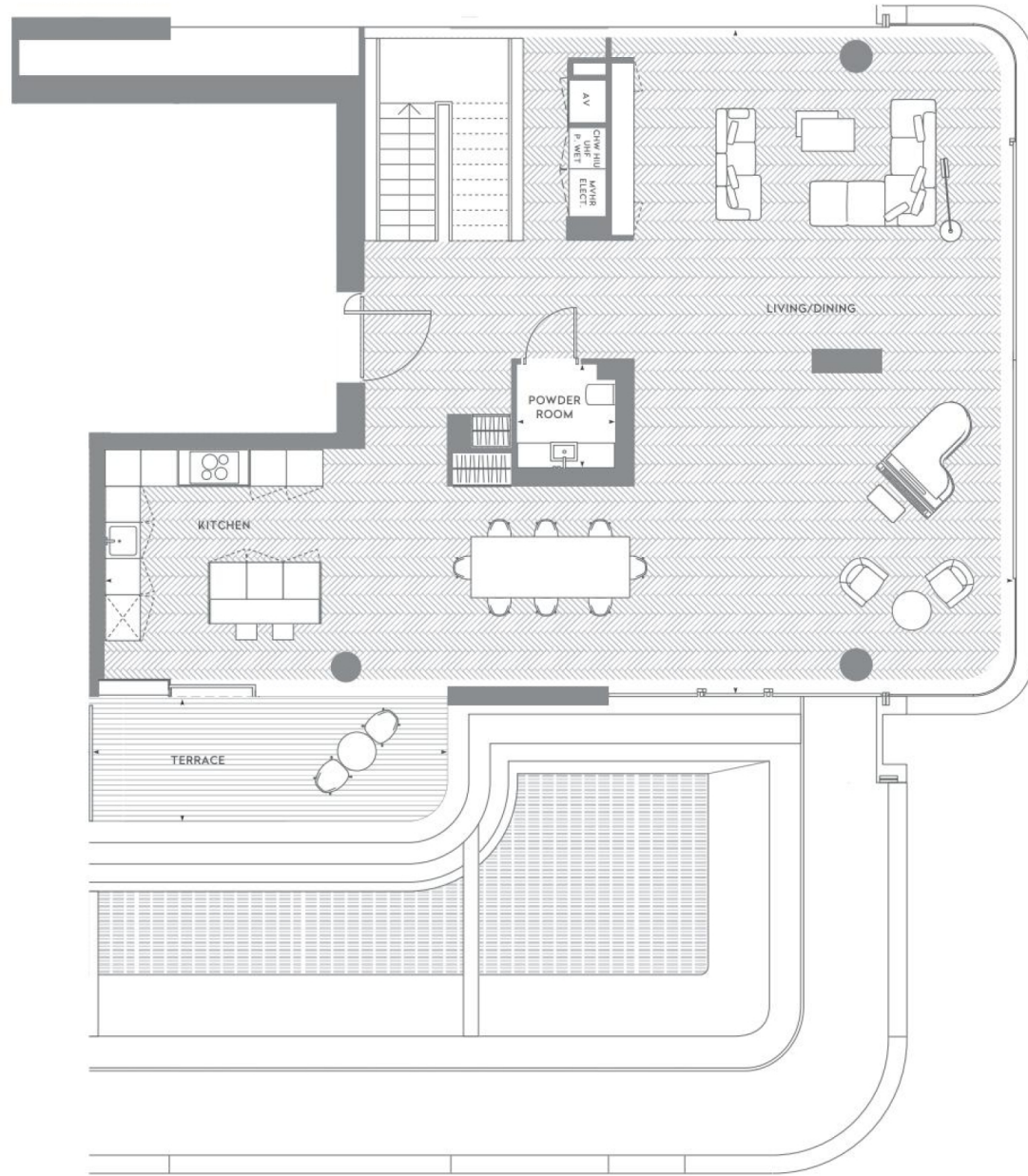
It benefits from the residents' gym, spa, cinema, pool and 24-hour concierge.

With a city address, the development offers fast transport links and a wealth of cultural and culinary experiences.









Particulars

Property

Principal Tower, Worship Street, Shoreditch, London EC2A
£9,900,000

Rooms



1



3



3

Features

- 48th Floor
- Penthouse Apartment
- 10 Year NHBC Warranty
- Panoramic Skyline Views

Information

Council Tax



Nouri Alexander

nouri.alexander@vitaproperties.uk
+4475 8405 1289



Scan for our website





T: +4420 7759 2199

E: enquiries@vitaproperties.uk

Disclaimer: These particulars are prepared as a general guide for prospective purchasers or tenants and do not constitute, nor constitute part of, an offer or contract. All statements, descriptions, and measurements contained herein are given in good faith and are believed to be correct at the time of printing, but any intending purchaser or tenant should not rely on them as statements or representations of fact and must satisfy themselves by inspection or otherwise as to their correctness. Floor plans and photographs are for illustrative purposes only and may not be to scale. The position and size of doors, windows, appliances, and other features are approximate. Anti-Money Laundering (AML): In line with the Money Laundering, Terrorist Financing and Transfer of Funds Regulations 2017, we are required to carry out customer due diligence checks. Buyers/tenants will be asked to provide proof of identity, address, and source of funds before a sale or rental can be agreed. Data Protection (GDPR): Personal information supplied to Vita Properties will be processed in accordance with the General Data Protection Regulation (GDPR). Your details may be retained for legitimate business purposes relating to property services. Full details of our Privacy Policy are available on request.

All rights reserved.