



Makers

JASPER WALK, ISLINGTON, LONDON N1

£8,667



Available immediately – The Makers Building: An Urban Retreat in Shoreditch – Nestled amidst the vibrant energy of Shoreditch and the financial district of the City of London.

The Makers Building rises as a prestigious 28-storey development, providing a tranquil sanctuary within the bustling capital. Designed with meticulous attention to detail by Avanti Architects, this exceptional structure gracefully blends contemporary elements with the warehouse typology of its surroundings, catering to the discerning preferences of its residents.. The Penthouse, a pinnacle of opulence and refinement, spans over 2300 sqft, featuring three bedrooms, two bathrooms, a guest W/C, and awe-inspiring floor-to-ceiling windows that bathe the living spaces in an abundance of natural light, creating an inviting and airy ambiance irrespective of weather conditions. The allure of the Penthouse extends to the landscaped west-facing roof gardens, offering breathtaking vistas and serene moments, ideal for relaxation and entertainment. It also includes a separate utility room and ample storage space. Seamlessly embracing modern technology, the Penthouse is equipped with a state-of-the-art home automation system by Crestron, providing effortless control over various aspects within the residence. Fitted ceiling





The Makers Building rises as a prestigious 28-storey development, providing a tranquil sanctuary within the bustling capital. Designed with meticulous attention to detail by Avanti Architects, this exceptional structure gracefully blends contemporary elements with the warehouse typology of its surroundings, catering to the discerning preferences of its residents.. The Penthouse, a pinnacle of opulence and refinement, spans over 2300 sqft, featuring three bedrooms, two bathrooms, a guest W/C, and awe-inspiring floor-to-ceiling windows that bathe the living spaces in an abundance of natural light, creating an inviting and airy ambiance irrespective of weather conditions. The allure of the Penthouse extends to the landscaped west-facing roof gardens, offering breathtaking vistas and serene moments, ideal for relaxation and entertainment. It also includes a separate utility room and ample storage space. Seamlessly embracing modern technology, the Penthouse is equipped with a state-of-the-art home automation system by Crestron, providing effortless control over various aspects within the residence. Fitted ceiling speakers in the living room and master bedroom, along with electrically operated window blinds, add both convenience and privacy to the luxurious living experience.







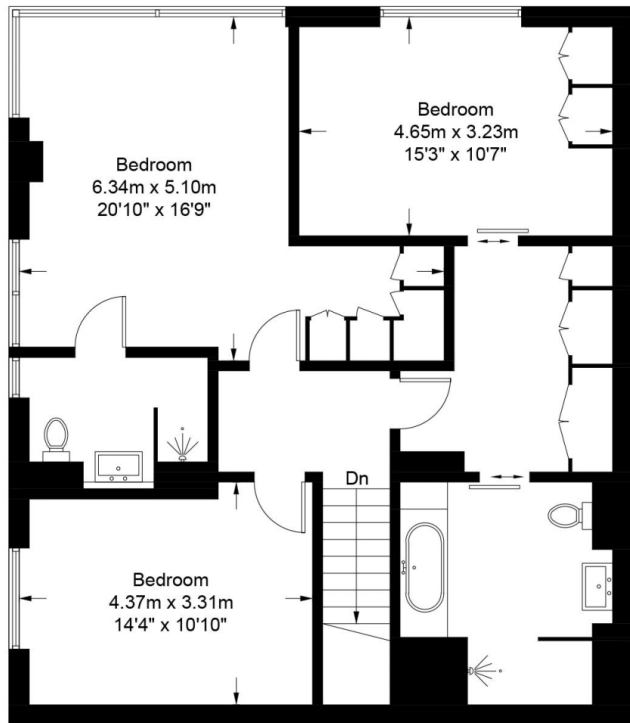


Scan for out video walkthrough

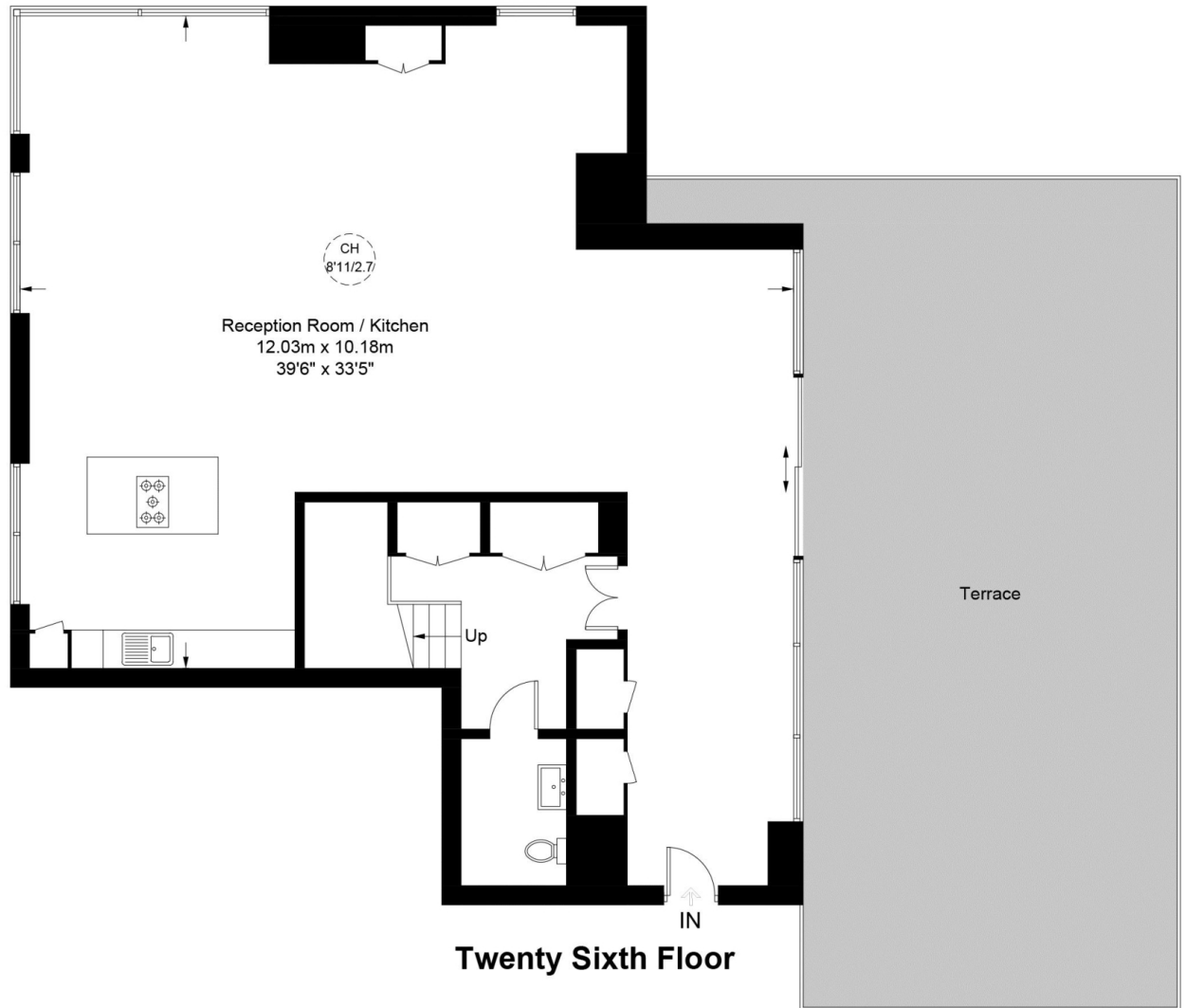


Makers Building, N1

Approximate Gross Internal Area = 2354 sq ft / 218.7 sq m



Twenty Fifth Floor



Twenty Sixth Floor



**Certified
Property
Measurer**

This plan is for layout guidance only. Not drawn to scale unless stated. Windows and door openings are approximate. Whilst every care is taken in the preparation of this plan, please check all dimensions, shapes and compass bearings before making any decisions reliant upon them. (ID995354)

Particulars

Property

Makers, Jasper Walk, Islington, London N1
£8,667

Rooms



1



2



3

Features

- Gym, Treatment room & Cinema
- 7 year NHBC warranty
- Penthouse
- Underfloor heating

Information

Council Tax

Score	Energy rating	Current	Potential
92+	A		
81-91	B		
69-80	C		
55-68	D		
39-54	E		
21-38	F		
1-20	G		



Nouri Alexander

nouri.alexander@vitaproperties.uk
+4475 8405 1289



Scan for our website





T: +4420 7759 2199
E: enquiries@vitaproperties.uk

Disclaimer: These particulars are prepared as a general guide for prospective purchasers or tenants and do not constitute, nor constitute part of, an offer or contract. All statements, descriptions, and measurements contained herein are given in good faith and are believed to be correct at the time of printing, but any intending purchaser or tenant should not rely on them as statements or representations of fact and must satisfy themselves by inspection or otherwise as to their correctness. Floor plans and photographs are for illustrative purposes only and may not be to scale. The position and size of doors, windows, appliances, and other features are approximate. Anti-Money Laundering (AML): In line with the Money Laundering, Terrorist Financing and Transfer of Funds Regulations 2017, we are required to carry out customer due diligence checks. Buyers/tenants will be asked to provide proof of identity, address, and source of funds before a sale or rental can be agreed. Data Protection (GDPR): Personal information supplied to Vita Properties will be processed in accordance with the General Data Protection Regulation (GDPR). Your details may be retained for legitimate business purposes relating to property services. Full details of our Privacy Policy are available on request.

All rights reserved.