



King Henrys Road
PRIMROSE HILL, LONDON NW3

£10,000



Discover the charm of this elegant semi-detached Victorian villa nestled in the heart of Primrose Hill, London. A majestic Japanese Acer tree graces the front garden, setting the stage for your short-term escape.

Spanning four levels, this spacious residence offers five inviting bedrooms and three versatile reception rooms, spanning a generous 3,000 sq ft. The rear boasts a sprawling private garden, perfect for al fresco moments.

Step inside, and you'll be captivated by the seamless blend of classic facade and contemporary brilliance. Designed by acclaimed architect Jamie Fobert, this residence garnered critical acclaim, with nominations for prestigious awards in 2007.





The house's innovative design revolves around interconnected volumes that flow from front to back. A striking “concrete table” structure supports the house, allowing for a departure from traditional layouts. An expansive open-plan living area becomes the nucleus of family life, harmoniously accommodating work, music practice, cooking, entertaining, and serene reflection. Dining effortlessly transitions into the living and kitchen spaces, leading to a tranquil garden room bathed in natural light.

Dual entrances offer convenience and style. The raised-ground entrance provides formal access, leading to a hallway that frames the lush garden views. The lower-ground entrance is perfect for everyday use, granting direct access to a living/tv room and a breathtaking elevated vista of the main living area.

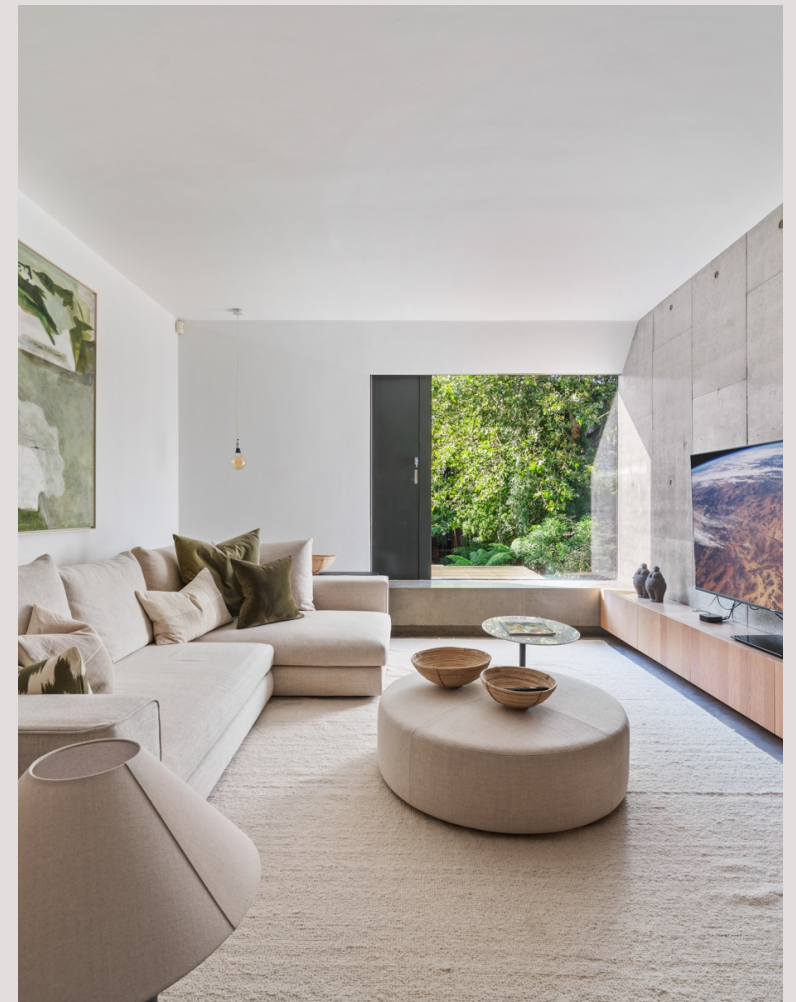








Scan for out video walkthrough



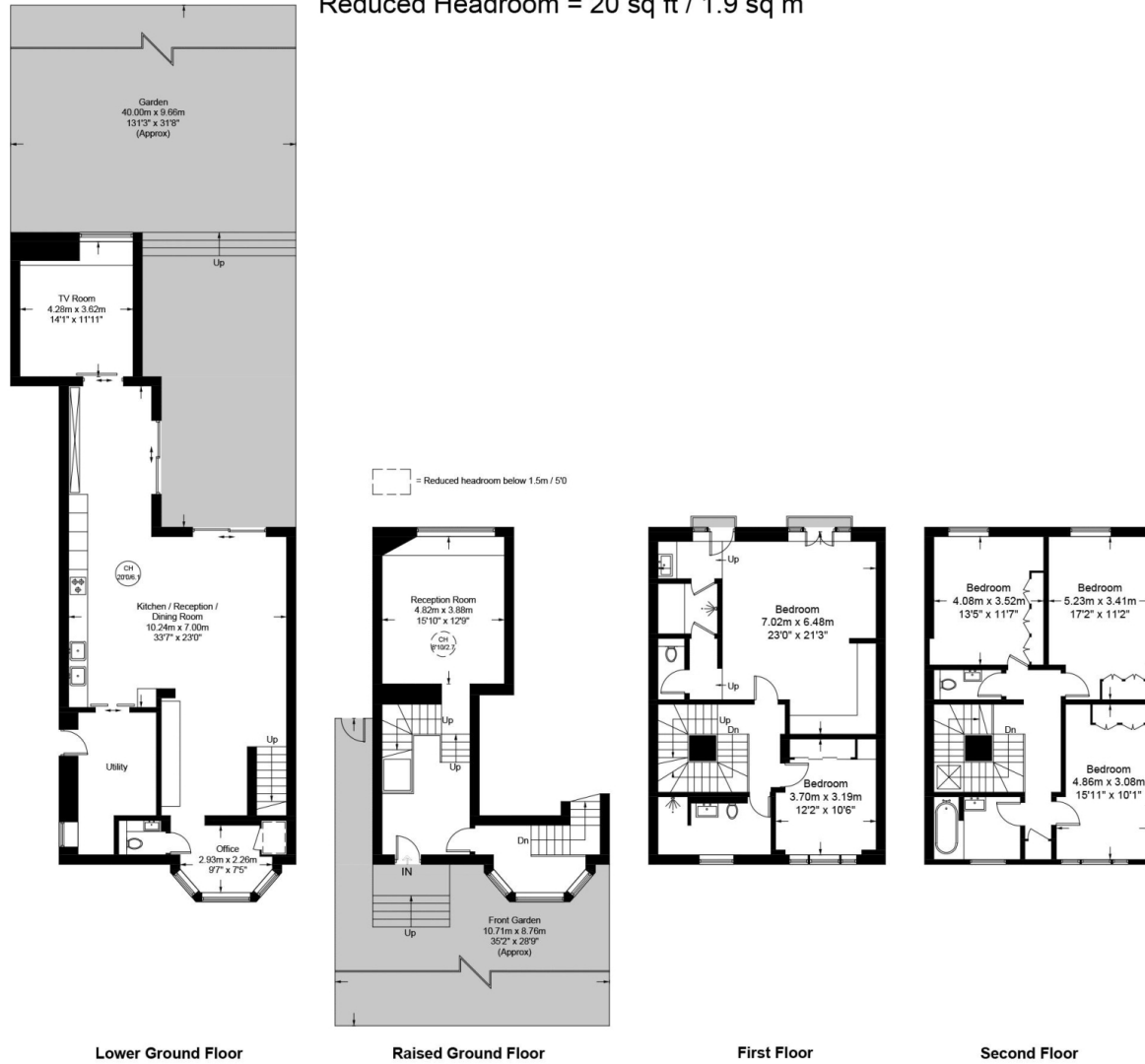


King Henrys Road, NW3

Approximate Gross Internal Area (Excluding Reduced Headroom)

3056 sq ft / 283.9 sq m

Reduced Headroom = 20 sq ft / 1.9 sq m



Lower Ground Floor

Raised Ground Floor

First Floor

Second Floor



**Certified
Property
Measurer**

This plan is for layout guidance only. Not drawn to scale unless stated. Windows and door openings are approximate. Whilst every care is taken in the preparation of this plan, please check all dimensions, shapes and compass bearings before making any decisions reliant upon them. (ID1003098)

Particulars

Property

King Henrys Road, Primrose Hill, London NW3
£10,000

Rooms



3



3



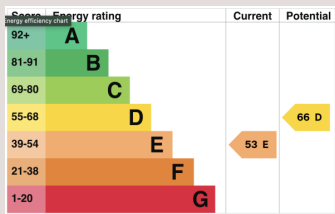
5

Features

- Stylish & Modern Furniture
- Tranquil Living
- Serene Feeling
- Large Private Garden with BBQ Area and Fire Pit

Information

Council Tax



Oliver Kent

oliver.kent@vitaproperties.uk
+4477 7274 0351



Scan for our website





T: +4420 7759 2199
E: enquiries@vitaproperties.uk

Disclaimer: These particulars are prepared as a general guide for prospective purchasers or tenants and do not constitute, nor constitute part of, an offer or contract. All statements, descriptions, and measurements contained herein are given in good faith and are believed to be correct at the time of printing, but any intending purchaser or tenant should not rely on them as statements or representations of fact and must satisfy themselves by inspection or otherwise as to their correctness. Floor plans and photographs are for illustrative purposes only and may not be to scale. The position and size of doors, windows, appliances, and other features are approximate. Anti-Money Laundering (AML): In line with the Money Laundering, Terrorist Financing and Transfer of Funds Regulations 2017, we are required to carry out customer due diligence checks. Buyers/tenants will be asked to provide proof of identity, address, and source of funds before a sale or rental can be agreed. Data Protection (GDPR): Personal information supplied to Vita Properties will be processed in accordance with the General Data Protection Regulation (GDPR). Your details may be retained for legitimate business purposes relating to property services. Full details of our Privacy Policy are available on request.

All rights reserved.