



The Mount

HAMPSTEAD VILLAGE, LONDON NW3

£1,000



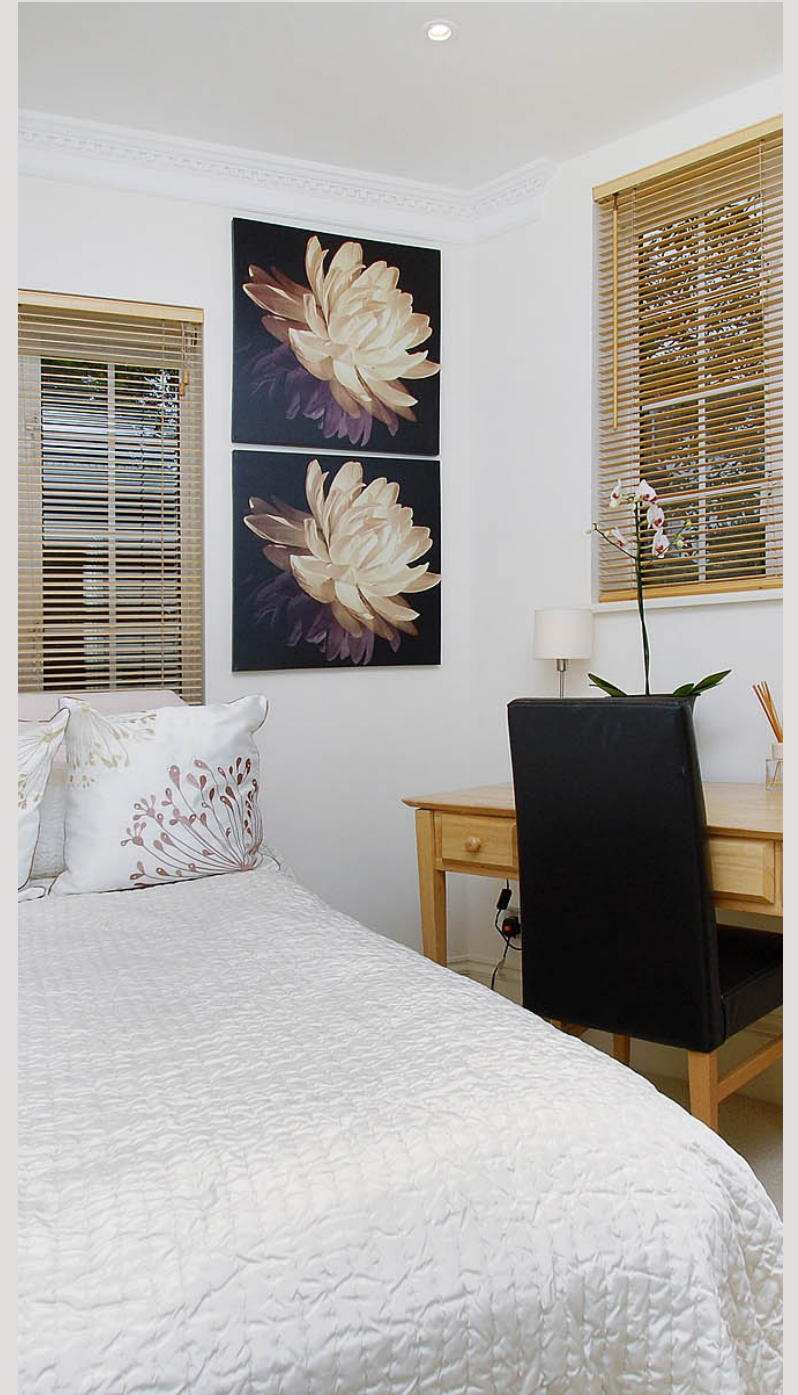
A two bedroom stunning apartment in the heart of Hampstead village with spectacular views and pristine, stylish interior, brand new kitchen and bathroom, double volume reception and fabulous private roof garden.





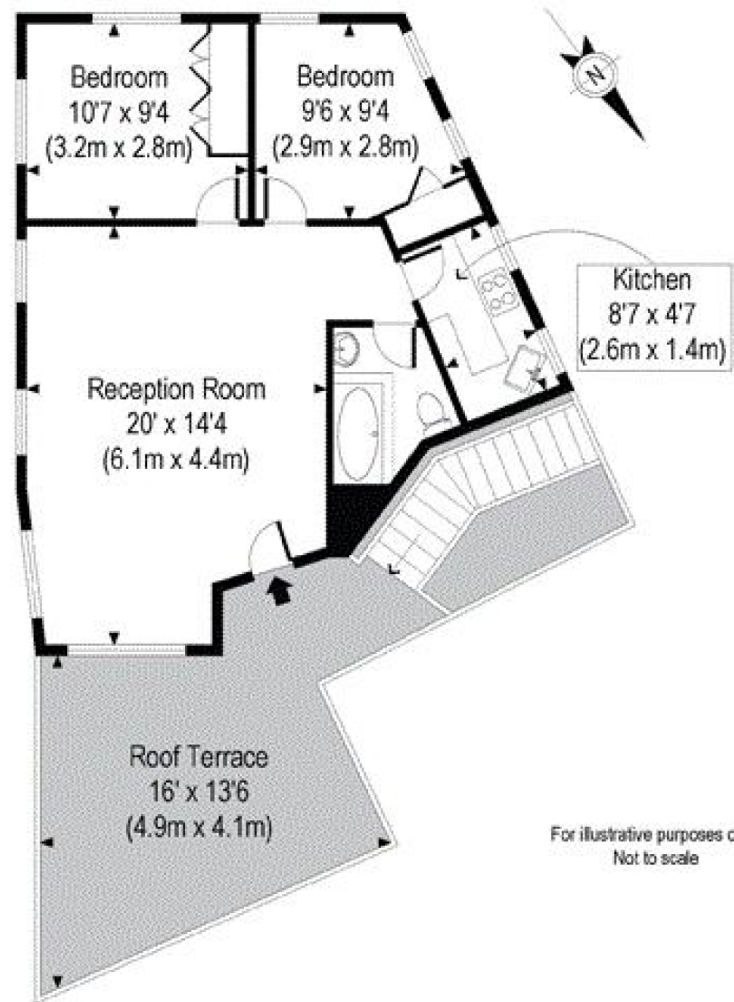






THE MOUNT
NW3

Approximate gross internal area 556 sq ft - 52 sq m



First Floor

Particulars

Property

The Mount, Hampstead Village, London NW3
£1,000

Rooms

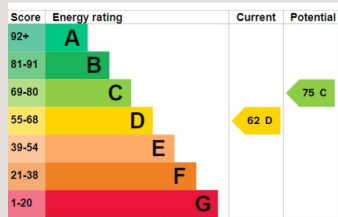


Features

- Period Conversion
- Close To Hampstead Heath
- Close To Hampstead Village
- Roof Terrace

Information

Council Tax



Zoe Browne

zoe.browne@vitaproperties.uk
+44 7880 277371



Scan for our website





T: +4420 7759 2199
E: enquiries@vitaproperties.uk

Disclaimer: These particulars are prepared as a general guide for prospective purchasers or tenants and do not constitute, nor constitute part of, an offer or contract. All statements, descriptions, and measurements contained herein are given in good faith and are believed to be correct at the time of printing, but any intending purchaser or tenant should not rely on them as statements or representations of fact and must satisfy themselves by inspection or otherwise as to their correctness. Floor plans and photographs are for illustrative purposes only and may not be to scale. The position and size of doors, windows, appliances, and other features are approximate. Anti-Money Laundering (AML): In line with the Money Laundering, Terrorist Financing and Transfer of Funds Regulations 2017, we are required to carry out customer due diligence checks. Buyers/tenants will be asked to provide proof of identity, address, and source of funds before a sale or rental can be agreed. Data Protection (GDPR): Personal information supplied to Vita Properties will be processed in accordance with the General Data Protection Regulation (GDPR). Your details may be retained for legitimate business purposes relating to property services. Full details of our Privacy Policy are available on request.

All rights reserved.