



Priory Terrace

SOUTH HAMPSTEAD, LONDON NW6

£650



Available Now - Set on the corner of Priory Terrace and the famous Abbey Road is this exciting 2 bed 1 bath 806sqft with open plan living accommodation leading out onto a landscaped terrace and upper level garden.

The extended flat measures 1,075 sqft, and there is an added bike store.

Further benefits include a landscaped garden.

Located on the historic 'Abbey Road', and bordering just between St Johns Wood & West Hampstead, this site benefits from easy access to a vast array of local amenities, bars and boutique shops.

Also benefiting from easy access to transport links from West Hampstead (Underground/ Overground/ Thameslink) and excellent bus links along Abbey Road & West End Lane







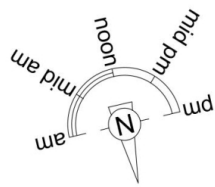





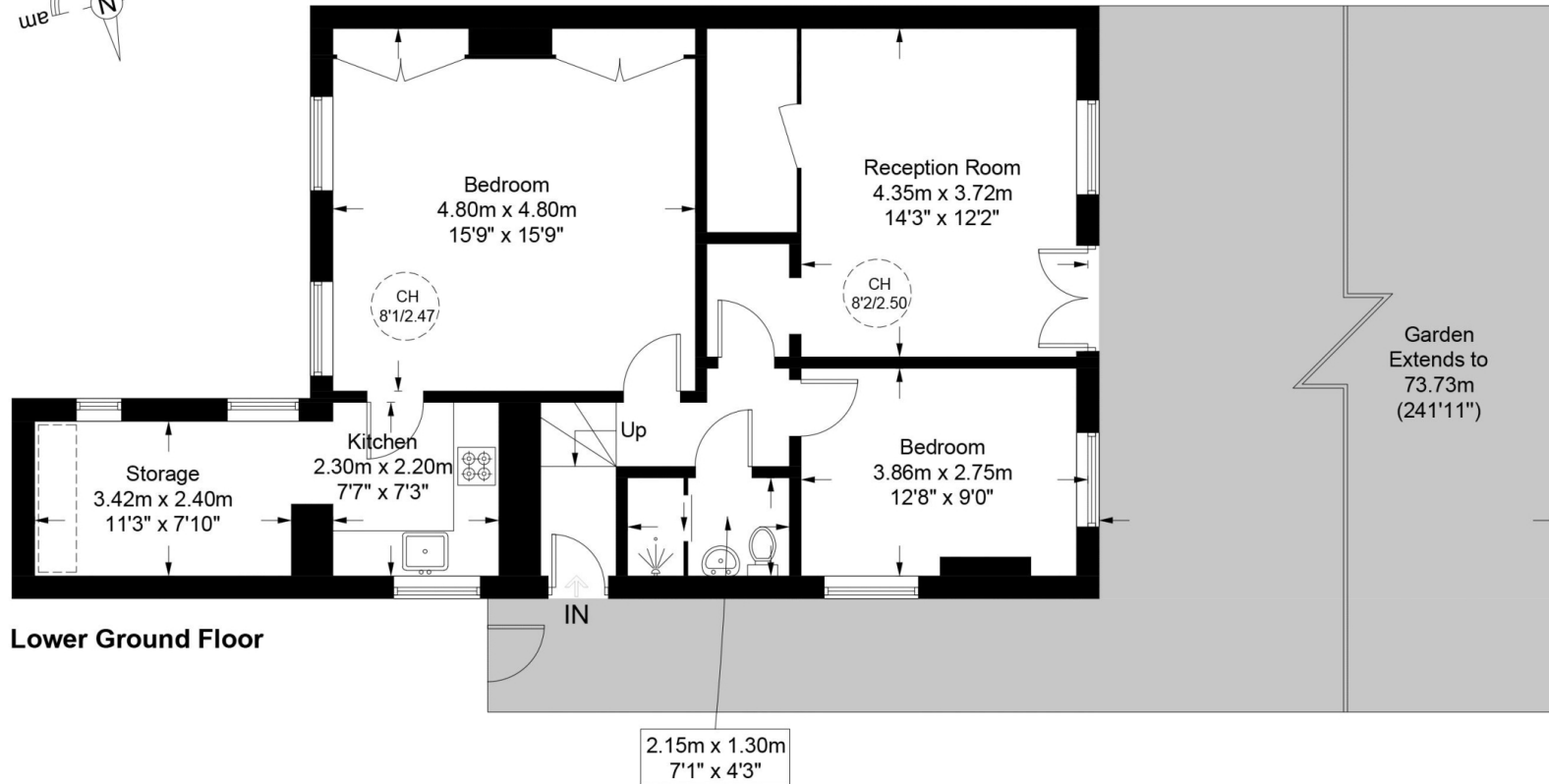
Priory Terrace, NW6

Approximate Gross Internal Area = 861 sq ft / 80.0 sq m

Restricted Height = 12 sq ft / 1.1 sq m



 = Reduced headroom below 1.5m / 5'0"



This plan is for layout guidance only and is not drawn to scale unless stated. All dimensions, including windows, doors, and the Total Gross Internal Area (GIA), are approximate. For precise measurements, please consult a qualified architect or surveyor before making any decisions based on this plan.



Particulars

Property

Priory Terrace, South Hampstead, London NW6
£650

Rooms

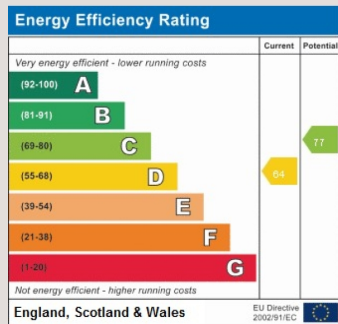


Features

- Two Double Bedrooms
- External Bike Store
- Private West Facing Garden
- Close to Transport

Information

Council Tax



Zoe Browne

zoe.browne@vitaproperties.uk
+44 7880 277371



Scan for our website





T: +4420 7759 2199

E: enquiries@vitaproperties.uk

Disclaimer: These particulars are prepared as a general guide for prospective purchasers or tenants and do not constitute, nor constitute part of, an offer or contract. All statements, descriptions, and measurements contained herein are given in good faith and are believed to be correct at the time of printing, but any intending purchaser or tenant should not rely on them as statements or representations of fact and must satisfy themselves by inspection or otherwise as to their correctness. Floor plans and photographs are for illustrative purposes only and may not be to scale. The position and size of doors, windows, appliances, and other features are approximate. Anti-Money Laundering (AML): In line with the Money Laundering, Terrorist Financing and Transfer of Funds Regulations 2017, we are required to carry out customer due diligence checks. Buyers/tenants will be asked to provide proof of identity, address, and source of funds before a sale or rental can be agreed. Data Protection (GDPR): Personal information supplied to Vita Properties will be processed in accordance with the General Data Protection Regulation (GDPR). Your details may be retained for legitimate business purposes relating to property services. Full details of our Privacy Policy are available on request.

All rights reserved.