



Gloucester Avenue
PRIMROSE HILL, LONDON NW1

£2,000,000



Nestled in a prime position along Gloucester Avenue, this sunlit unique three bedroom maisonette exudes charm and sophistication. Immaculately presented, the residence boasts a graceful and expansive living experience, courtesy of its well-designed rooms and inviting outdoor areas. Occupying a segment of a period building, the property encompasses three bedrooms, each featuring its private en-suite facilities.

Situated in the heart of the vibrant Primrose Hill Village, Gloucester Avenue offers proximity to an array of delightful shops, tempting restaurants, and cozy cafes. The residence not only provides a stylish and comfortable living space but also places residents within moments of the area's bustling amenities.

The property's interior is thoughtfully designed, emphasizing both elegance and functionality. The spacious rooms are well-proportioned, creating an open and airy ambiance that bathes the home in natural light. With three bedrooms, each equipped with its own en-suite facilities, residents enjoy the luxury of privacy and convenience.

Conveniently positioned, the residence benefits from its close proximity to the Chalk Farm underground station, just 0.3 miles away. This station, serviced by the Northern Line, ensures efficient and easy commuting, connecting





In summary, this Gloucester Avenue residence not only boasts a central and sought-after location near Primrose Hill Village but also provides a meticulously maintained and stylish living space with three bedrooms and en suite facilities, offering a harmonious blend of comfort and convenience.









Scan for out video walkthrough



Gloucester Avenue

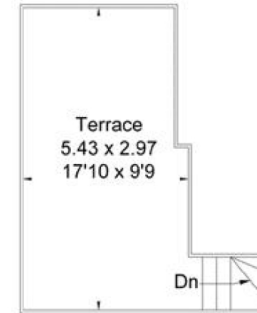
Gross Internal Area (approx) = 143.1 sq m / 1540 sq ft (Excluding Vault)


Store = 2.9 sq m / 31 sq ft

Total = 146 sq m / 1571 sq ft

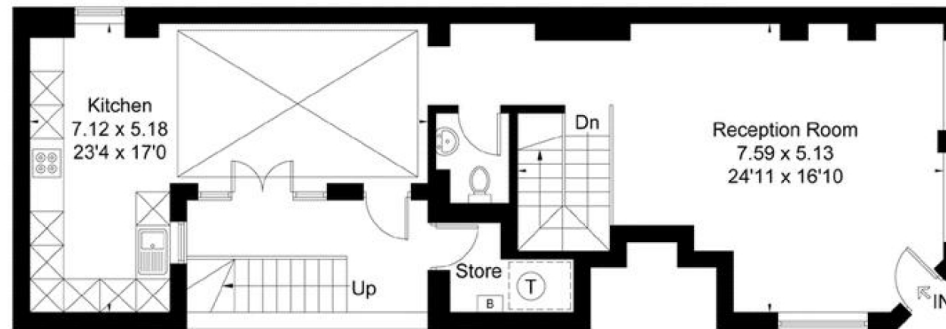
For identification only. Not to scale.

© Floorplanz Ltd



 = Reduced headroom below 1.5m / 5'0

First Floor



Ground Floor



Lower Ground Floor

Particulars

Property

Gloucester Avenue, Primrose Hill, London NW1
£2,000,000

Rooms



1



3



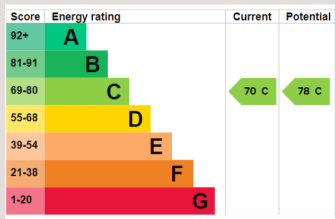
3

Features

- Stunning Period Property With Sole Access
- Three Double Bedrooms
- Three En-Suite Shower Rooms + Guest WC
- 24ft + reception Room Leading To Plant Garden

Information

Council Tax



Scan for our website





T: +4420 7759 2199
E: enquiries@vitaproperties.uk

Disclaimer: These particulars are prepared as a general guide for prospective purchasers or tenants and do not constitute, nor constitute part of, an offer or contract. All statements, descriptions, and measurements contained herein are given in good faith and are believed to be correct at the time of printing, but any intending purchaser or tenant should not rely on them as statements or representations of fact and must satisfy themselves by inspection or otherwise as to their correctness. Floor plans and photographs are for illustrative purposes only and may not be to scale. The position and size of doors, windows, appliances, and other features are approximate. Anti-Money Laundering (AML): In line with the Money Laundering, Terrorist Financing and Transfer of Funds Regulations 2017, we are required to carry out customer due diligence checks. Buyers/tenants will be asked to provide proof of identity, address, and source of funds before a sale or rental can be agreed. Data Protection (GDPR): Personal information supplied to Vita Properties will be processed in accordance with the General Data Protection Regulation (GDPR). Your details may be retained for legitimate business purposes relating to property services. Full details of our Privacy Policy are available on request.

All rights reserved.