



## Cresta House

FINCHLEY ROAD, SWISS COTTAGE, LONDON, NW3

£4,117



This brand-new, refurbished three-bedroom duplex apartment is located within a sought-after portered block in the heart of Swiss Cottage. Offering luxury living throughout, the property features three spacious bedrooms, a generous reception room, and direct access to three private balconies that provide stunning panoramic views to the central and northwest.

The apartment also boasts a fully fitted, separate kitchen and three modern bathrooms, ensuring comfort and convenience for all residents. Additional highlights include exceptional natural light and an impeccable finish across all living spaces.

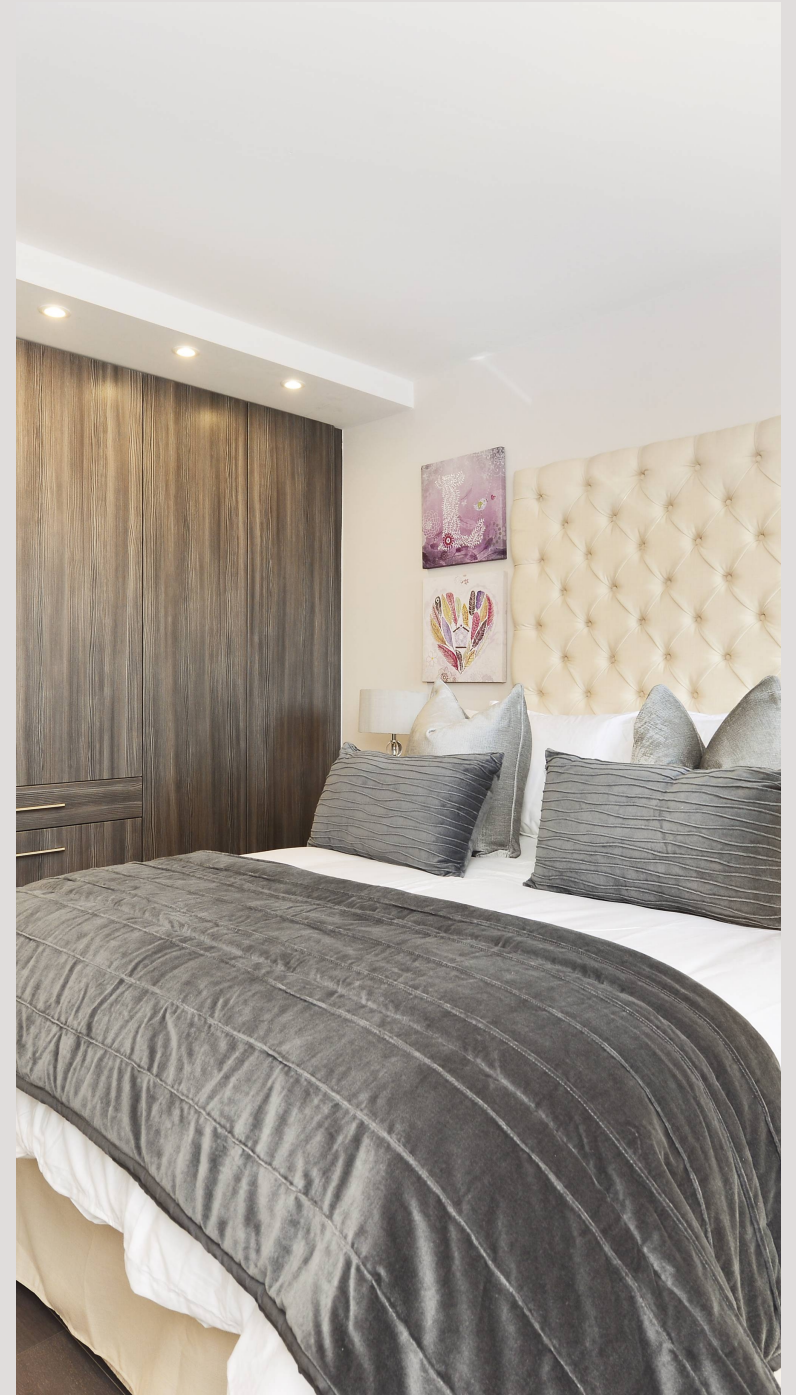
Perfectly positioned just across the road from Swiss Cottage Underground Station and seconds away from a wide range of local amenities.





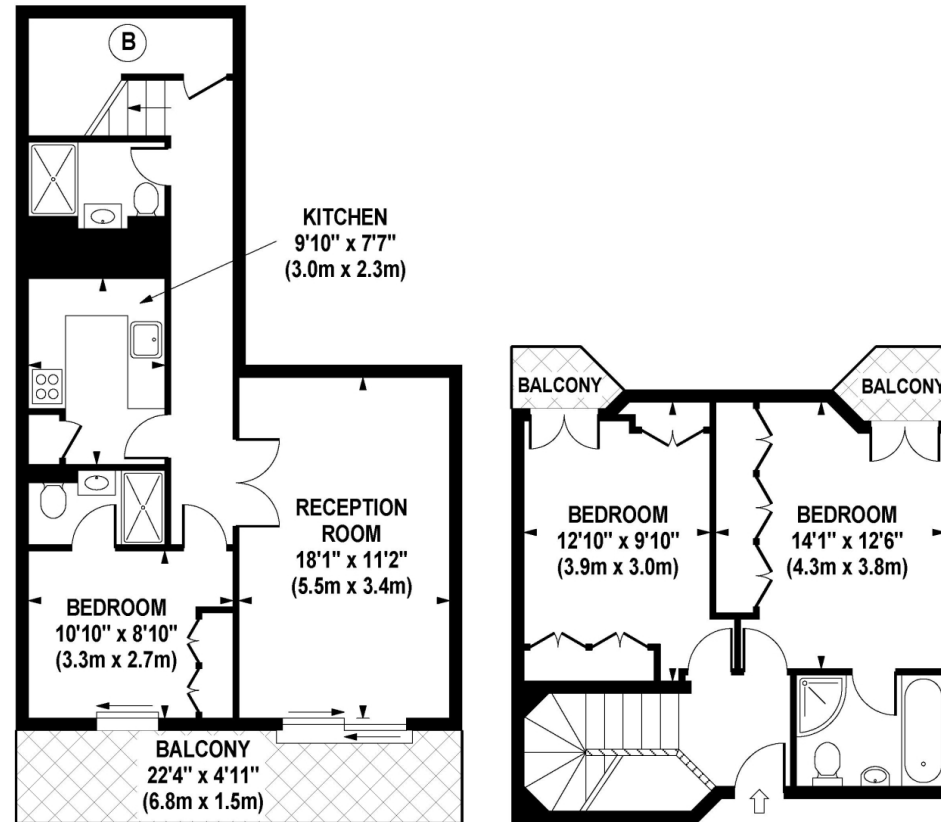






## CRESTA HOUSE

Approximate Gross Internal Area 1060 sq ft / 98.5 sq m



**THIRD FLOOR  
GROSS INTERNAL  
FLOOR AREA 608 SQ FT**

**FOURTH FLOOR  
GROSS INTERNAL  
FLOOR AREA 452 SQ FT**

Although every attempt has been made to ensure accuracy, all measurements are approximate. The floor plan's for illustrative purposes only and not to scale. Measured in accordance to RICS standards.

# Particulars

## Property

Cresta House, Finchley Road, Swiss Cottage, London, NW3  
£4,117

## Rooms



1



2



3

## Features

- Located Within Walking Distance To Swiss Cottage
- Managed Block
- Newly Refurbished
- Popular Portered Block

## Information

Council Tax



Oliver Kent

[oliver.kent@vitaproperties.uk](mailto:oliver.kent@vitaproperties.uk)  
+4477 7274 0351



Scan for our website





T: +4420 7759 2199

E: [enquiries@vitaproperties.uk](mailto:enquiries@vitaproperties.uk)

Disclaimer: These particulars are prepared as a general guide for prospective purchasers or tenants and do not constitute, nor constitute part of, an offer or contract. All statements, descriptions, and measurements contained herein are given in good faith and are believed to be correct at the time of printing, but any intending purchaser or tenant should not rely on them as statements or representations of fact and must satisfy themselves by inspection or otherwise as to their correctness. Floor plans and photographs are for illustrative purposes only and may not be to scale. The position and size of doors, windows, appliances, and other features are approximate. Anti-Money Laundering (AML): In line with the Money Laundering, Terrorist Financing and Transfer of Funds Regulations 2017, we are required to carry out customer due diligence checks. Buyers/tenants will be asked to provide proof of identity, address, and source of funds before a sale or rental can be agreed. Data Protection (GDPR): Personal information supplied to Vita Properties will be processed in accordance with the General Data Protection Regulation (GDPR). Your details may be retained for legitimate business purposes relating to property services. Full details of our Privacy Policy are available on request.

All rights reserved.