



Gresham Gardens
GOLDERS GREEN, LONDON NW11
£1,850,000



A stunning five bedroom double fronted semi-detached family home with off street parking for 2/3 cars situated 0.7 miles from Golders Green Underground station.

This superb home has been refurbished and extended to high standard offering 2,899 sq ft of accommodation over two floors, comprising an entrance hall, reception room, fabulous open plan kitchen/dining room/reception room with sliding doors opening to the large patio and garden, office/study, principal bedroom with en-suite bathroom, four further bedrooms (two with jack & jill en-suite shower room), family bathroom, utility room and guest cloakroom.

Further benefits include underfloor heating on the ground floor and bathrooms, air conditioning throughout and potential to further extend into the loft with planning permission already approved. Located within moments of Basing Hill Park, 0.7 miles from Golders Hill Park and 0.5 miles from the many shops, cafes and restaurants in Golders Green.











Scan for out video walkthrough



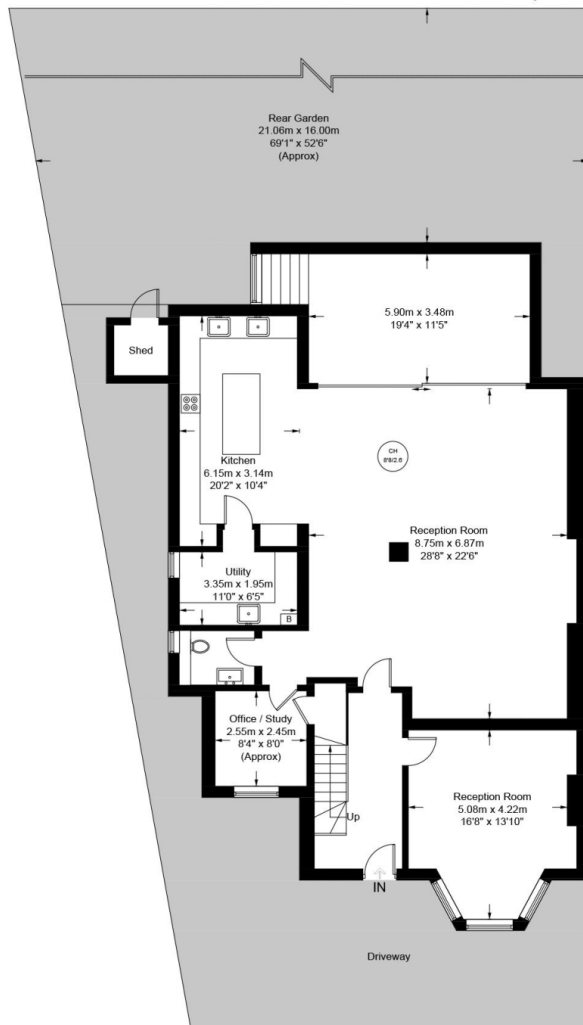


Gresham Gardens, NW11

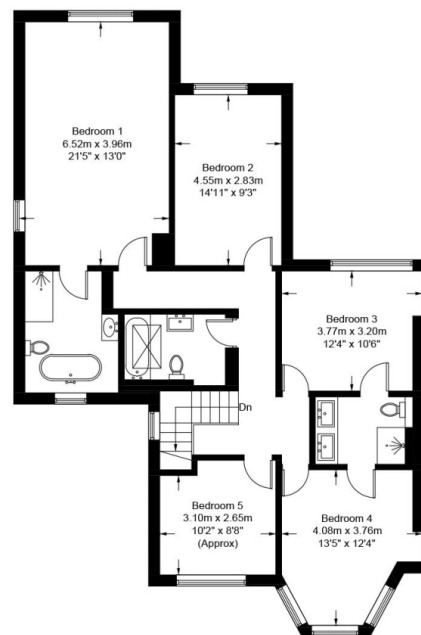
Approximate Gross Internal Area = 2899 sq ft / 269.3 sq m

Shed = 20 sq ft / 1.9 sq m

Total = 2919 sq ft / 271.2 sq m



Ground Floor



First Floor



Certified
Property
Measurer

This plan is for layout guidance only. Not drawn to scale unless stated. Windows and door openings are approximate. Whilst every care is taken in the preparation of this plan, please check all dimensions, shapes and compass bearings before making any decisions reliant upon them. (ID999184)

Particulars

Property

Gresham Gardens, Golders Green, London NW11
£1,850,000

Rooms



3



3



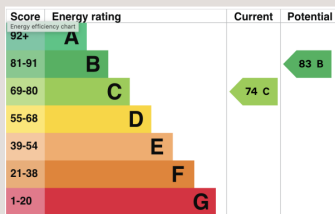
5

Features

- Air Conditioning
- Parking for 3 Cars
- Huge Garden
- Moments to Parks and Transport

Information

Council Tax



Jonathan Singer

jonathan.singer@vitaproperties.uk
+4478 8428 6414



Scan for our website





T: +4420 7759 2199
E: enquiries@vitaproperties.uk

Disclaimer: These particulars are prepared as a general guide for prospective purchasers or tenants and do not constitute, nor constitute part of, an offer or contract. All statements, descriptions, and measurements contained herein are given in good faith and are believed to be correct at the time of printing, but any intending purchaser or tenant should not rely on them as statements or representations of fact and must satisfy themselves by inspection or otherwise as to their correctness. Floor plans and photographs are for illustrative purposes only and may not be to scale. The position and size of doors, windows, appliances, and other features are approximate. Anti-Money Laundering (AML): In line with the Money Laundering, Terrorist Financing and Transfer of Funds Regulations 2017, we are required to carry out customer due diligence checks. Buyers/tenants will be asked to provide proof of identity, address, and source of funds before a sale or rental can be agreed. Data Protection (GDPR): Personal information supplied to Vita Properties will be processed in accordance with the General Data Protection Regulation (GDPR). Your details may be retained for legitimate business purposes relating to property services. Full details of our Privacy Policy are available on request.

All rights reserved.