



Whittlebury Mews East  
PRIMROSE HILL, LONDON, NW1

£2,265



SHORT LET - Introducing a breathtaking house in a prestigious development of four newly constructed townhouses, nestled within a secure and gated community. This stunning property offers modern architecture and spacious living spaces, designed to perfection. With allocated parking and a private courtyard, this residence exudes luxury and exclusivity.

Step inside the impressive entrance hall, which sets the tone for the contemporary elegance found throughout the house. The double reception room provides a versatile space for relaxation and entertainment, while the open plan dining room and kitchen create a seamless flow for social gatherings and culinary delights. The kitchen boasts high-end appliances and sleek finishes, making it a chef's dream.

The house comprises three double bedrooms, each offering a haven of comfort and style. Two of the bedrooms feature en-suite facilities, providing convenience and privacy. Additionally, there is a further shower room and a guest cloakroom, ensuring ample amenities for residents and guests.





Conveniently situated near the vibrant shops and restaurants of the local area, including the renowned Regent's Park Road, you'll enjoy a plethora of dining and shopping options at your doorstep. Just moments away, Primrose Hill Park awaits, offering a serene escape and breathtaking views. For seamless travel connections, Chalk Farm Underground station (Northern Line) is a short stroll away, allowing easy access to the wider city.

This exceptional house is a true gem, offering contemporary design, spacious living areas, and a sought-after location. Whether you're seeking a tranquil retreat or a vibrant urban lifestyle, this property caters to your every desire. Don't miss the opportunity to make this extraordinary residence your own.



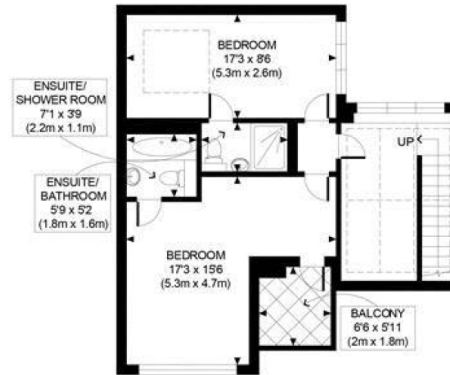






Scan for out video walkthrough





FIRST FLOOR  
GROSS INTERNAL  
FLOOR AREA 568 SQ FT



BASEMENT  
GROSS INTERNAL  
FLOOR AREA 711 SQ FT



GROUND FLOOR  
GROSS INTERNAL  
FLOOR AREA 596 SQ FT

APPROX. GROSS INTERNAL FLOOR AREA 1875 SQ FT / 174 SQM

# Particulars

## Property

Whittlebury Mews East, Primrose Hill, London, NW1  
£2,265

## Rooms

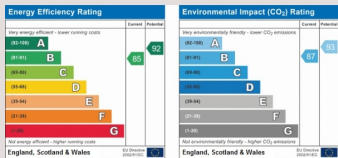


## Features

- Private courtyard
- Allocated underground parking
- Modern throughout
- Balcony

## Information

Council Tax



Oliver Kent

oliver.kent@vitaproperties.uk  
+4477 7274 0351



Scan for our website





T: +4420 7759 2199  
E: [enquiries@vitaproperties.uk](mailto:enquiries@vitaproperties.uk)

Disclaimer: These particulars are prepared as a general guide for prospective purchasers or tenants and do not constitute, nor constitute part of, an offer or contract. All statements, descriptions, and measurements contained herein are given in good faith and are believed to be correct at the time of printing, but any intending purchaser or tenant should not rely on them as statements or representations of fact and must satisfy themselves by inspection or otherwise as to their correctness. Floor plans and photographs are for illustrative purposes only and may not be to scale. The position and size of doors, windows, appliances, and other features are approximate. Anti-Money Laundering (AML): In line with the Money Laundering, Terrorist Financing and Transfer of Funds Regulations 2017, we are required to carry out customer due diligence checks. Buyers/tenants will be asked to provide proof of identity, address, and source of funds before a sale or rental can be agreed. Data Protection (GDPR): Personal information supplied to Vita Properties will be processed in accordance with the General Data Protection Regulation (GDPR). Your details may be retained for legitimate business purposes relating to property services. Full details of our Privacy Policy are available on request.

All rights reserved.