



College Crescent
SWISS COTTAGE, LONDON NW3

£1,750,000



Welcome to the prestigious penthouse apartment situated on the fourth and fifth floors of College Crescent, Swiss Cottage NW3. This luxurious residence features a carefully crafted layout that maximizes comfort and style.

As you step inside, you'll be captivated by the fourth-floor area, which houses a spacious kitchen, one bedroom and one elegant reception room. The kitchen is a culinary haven, offering modern appliances, ample storage, and a stylish design that invites you to create culinary masterpieces.

Adjacent to the kitchen, the two receptions provide versatile spaces for entertaining guests, hosting social gatherings, or simply unwinding after a long day. These well-appointed rooms are flooded with natural light, creating an inviting and relaxing ambiance. Ascending to the fifth floor, you'll discover a haven of tranquility.

This level is dedicated to three beautifully designed bedrooms, each providing a private and serene space for rest and rejuvenation. The master bedroom is accompanied by a luxurious walk-in wardrobe, offering ample storage and an air of indulgence.





The remaining two bedrooms are equally well-appointed, providing comfort and privacy for family members or guests. With thoughtful attention to detail, each bedroom has been meticulously designed to create a peaceful sanctuary.

Nestled in the sought-after Swiss Cottage neighborhood, College Crescent offers a prime location that balances serenity with convenience. You'll enjoy easy access to an array of amenities, including shops, restaurants, and entertainment options.

Additionally, the nearby Swiss Cottage Underground station ensures seamless transportation throughout London. In summary, this exquisite penthouse apartment on College Crescent, Swiss Cottage NW3, offers a refined living experience.









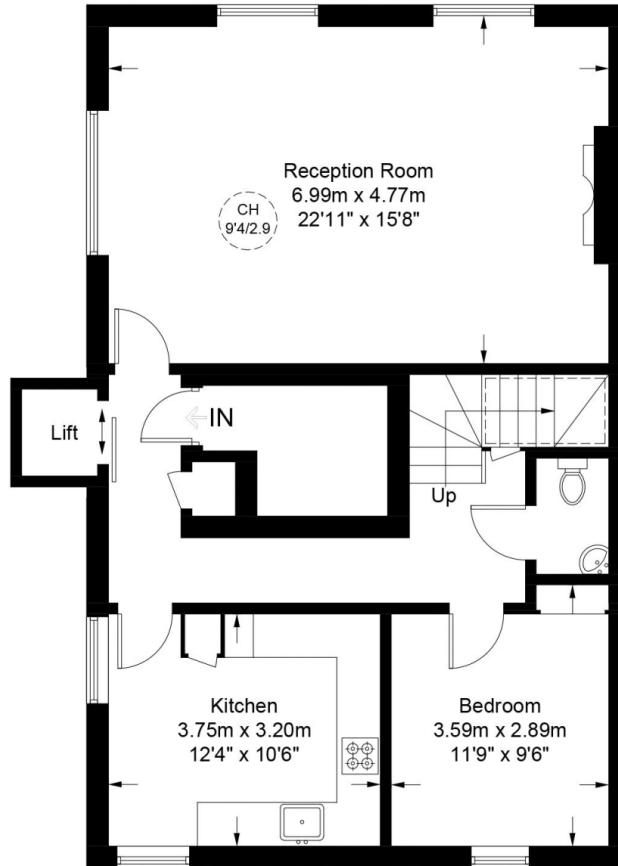
Scan for out video walkthrough



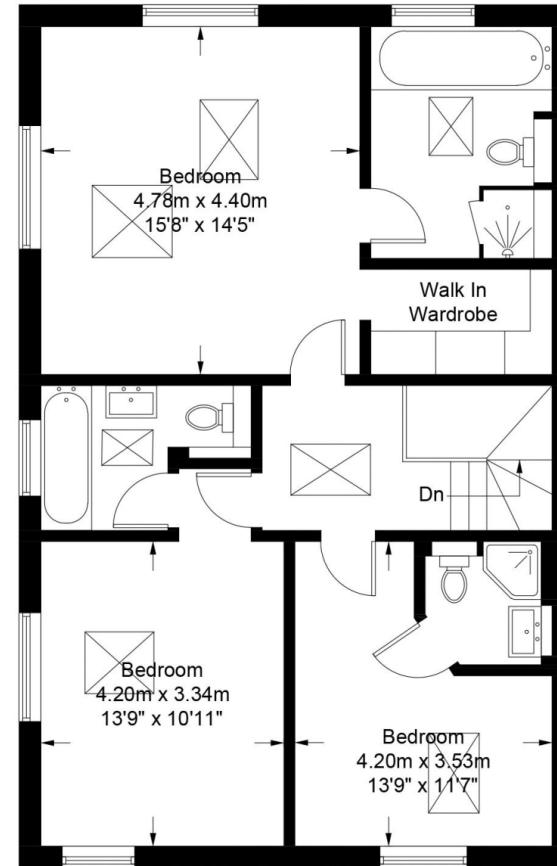


College Crescent, NW3

Approximate Gross Internal Area = 1615 sq ft / 150.0 sq m
(Excluding Reduced Headroom / Lift)
Reduced Headroom = 18 sq ft / 1.7 sq m
Total = 1633 sq ft / 151.7 sq m



Fourth Floor



Fifth Floor



**Certified
Property
Measurer**

This plan is for layout guidance only. Not drawn to scale unless stated. Windows and door openings are approximate. Whilst every care is taken in the preparation of this plan, please check all dimensions, shapes and compass bearings before making any decisions reliant upon them. (ID973942)

Particulars

Property

College Crescent, Swiss Cottage, London NW3
£1,750,000

Rooms



1



3



4

Features

- Penthouse Apartment
- Lift Directly Into the Apartment
- Allocated Gated Off Street Parking
- Modern - Turnkey

Information

Council Tax

Energy rating and score

This property's current energy rating is C. It has the potential to be C.

[See how to improve this property's energy efficiency.](#)

Score	Energy rating	Current	Potential
92+	A		
81-91	B		
69-80	C	77 C	78 C
55-68	D		
39-54	E		
21-38	F		
1-20	G		

The graph shows this property's current and potential energy rating.



Jonathan Singer

jonathan.singer@vitaproperties.uk
+4478 8428 6414



Scan for our website





T: +4420 7759 2199

E: enquiries@vitaproperties.uk

Disclaimer: These particulars are prepared as a general guide for prospective purchasers or tenants and do not constitute, nor constitute part of, an offer or contract. All statements, descriptions, and measurements contained herein are given in good faith and are believed to be correct at the time of printing, but any intending purchaser or tenant should not rely on them as statements or representations of fact and must satisfy themselves by inspection or otherwise as to their correctness. Floor plans and photographs are for illustrative purposes only and may not be to scale. The position and size of doors, windows, appliances, and other features are approximate. Anti-Money Laundering (AML): In line with the Money Laundering, Terrorist Financing and Transfer of Funds Regulations 2017, we are required to carry out customer due diligence checks. Buyers/tenants will be asked to provide proof of identity, address, and source of funds before a sale or rental can be agreed. Data Protection (GDPR): Personal information supplied to Vita Properties will be processed in accordance with the General Data Protection Regulation (GDPR). Your details may be retained for legitimate business purposes relating to property services. Full details of our Privacy Policy are available on request.

All rights reserved.