



Buckingham Palace Road
WESTMINSTER, LONDON SW1W

£923



Experience the epitome of central living with this exceptional two-bedroom apartment located on the first floor of a period conversion in the heart of Westminster. Impeccably refurbished to a very high standard, this flat offers a luxurious and contemporary living space.

Step inside and be greeted by the spaciousness and elegance of this beautifully designed apartment. The property features a large master bedroom with an en-suite bathroom and fitted storage, providing a tranquil retreat for relaxation. The second double bedroom also comes with fitted storage, offering ample space for your belongings. A second bathroom ensures convenience and privacy for all residents.

The highlight of the apartment is the large semi open-plan kitchen and living room, thoughtfully designed to create a seamless flow between cooking, dining, and lounging areas. The modern kitchen is equipped with high-end appliances and provides everything you need to unleash your culinary skills. The living area offers a comfortable space to unwind and entertain, with plenty of room for dining with friends and family.





This apartment boasts a range of desirable features, including wood floors that add warmth and character, high ceilings that create an airy atmosphere, and underfloor heating for optimal comfort throughout the year. Every detail has been carefully considered to enhance your living experience.

Situated in the heart of Westminster, this property offers unrivaled convenience and access to all that London has to offer. The closest tube station, Victoria, provides easy connections to the District, Piccadilly, and Circle lines, allowing you to explore the city with ease. With a wide range of amenities, including shops, restaurants, and cultural attractions, right at your doorstep, you'll never have a dull moment living in this vibrant neighborhood.



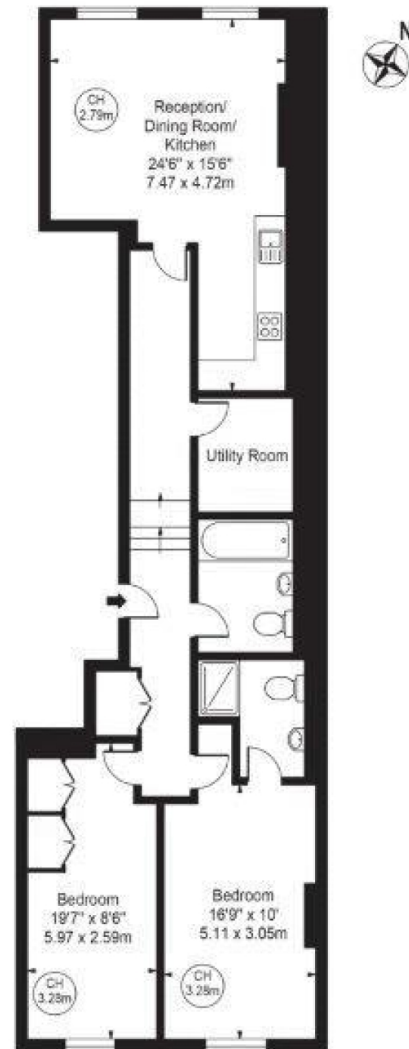




Scan for out video walkthrough



Buckingham Palace Road
Approx. Gross Internal Area 958 Sq Ft - 89.00 Sq M



First Floor

For Illustration Purposes Only - Not To Scale

This floor plan should be used as a general outline for guidance only and does not constitute in whole or in part an offer or contract. Any intending purchaser or lessee should satisfy themselves by inspection, searches, enquiries and full survey as to the correctness of each statement. Any areas, measurements or distances quoted are approximate and should not be used to value a property or be the basis of any sale or let.

Particulars

Property

Buckingham Palace Road, Westminster, London SW1W
£923

Rooms



Features

- Managed
- Moments to Central London
- Modern
- Wooden Floors Throughout

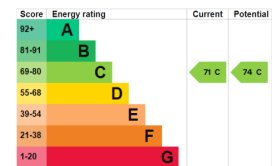
Information

Council Tax

Energy rating and score

This property's current energy rating is C. It has the potential to be C.

See how to improve this property's energy efficiency.



The graph shows this property's current and potential energy rating.



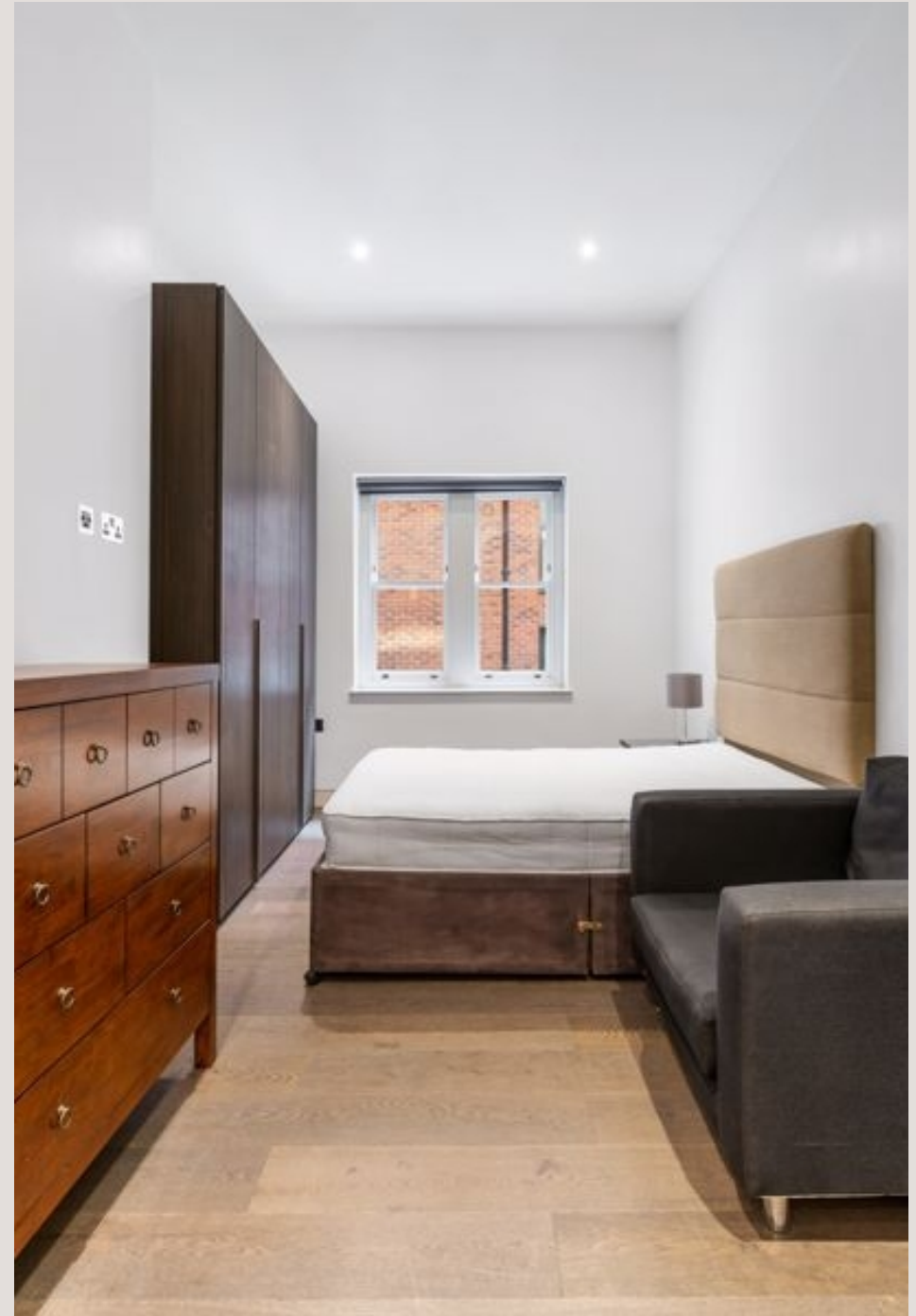
Oliver Kent

oliver.kent@vitaproperties.uk

+4477 7274 0351



Scan for our website





T: +4420 7759 2199

E: enquiries@vitaproperties.uk

Disclaimer: These particulars are prepared as a general guide for prospective purchasers or tenants and do not constitute, nor constitute part of, an offer or contract. All statements, descriptions, and measurements contained herein are given in good faith and are believed to be correct at the time of printing, but any intending purchaser or tenant should not rely on them as statements or representations of fact and must satisfy themselves by inspection or otherwise as to their correctness. Floor plans and photographs are for illustrative purposes only and may not be to scale. The position and size of doors, windows, appliances, and other features are approximate. Anti-Money Laundering (AML): In line with the Money Laundering, Terrorist Financing and Transfer of Funds Regulations 2017, we are required to carry out customer due diligence checks. Buyers/tenants will be asked to provide proof of identity, address, and source of funds before a sale or rental can be agreed. Data Protection (GDPR): Personal information supplied to Vita Properties will be processed in accordance with the General Data Protection Regulation (GDPR). Your details may be retained for legitimate business purposes relating to property services. Full details of our Privacy Policy are available on request.

All rights reserved.