



Englands Lane
BELSIZE PARK, LONDON NW3
£925



A bright, spacious and homely three bedroom home available to rent in Belsize Park. Set on a charming street with an abundance of cafes, restaurants and boutique shops, this split-level three bed is quiet escape within London.

Well designed open-plan living area with access onto arguable this best feature of this stunning property; the gorgeous South facing Terrace with spectacular green views across London, including direct view of The Shard.

Upstairs are your three bedrooms, all very good sizes, two with their own en-suite.

Well situated with Chalk Farm Station (Northern line), Swiss Cottage (Jubilee Line) & Kentish Town West (Overground) all within a reasonable walking distance.



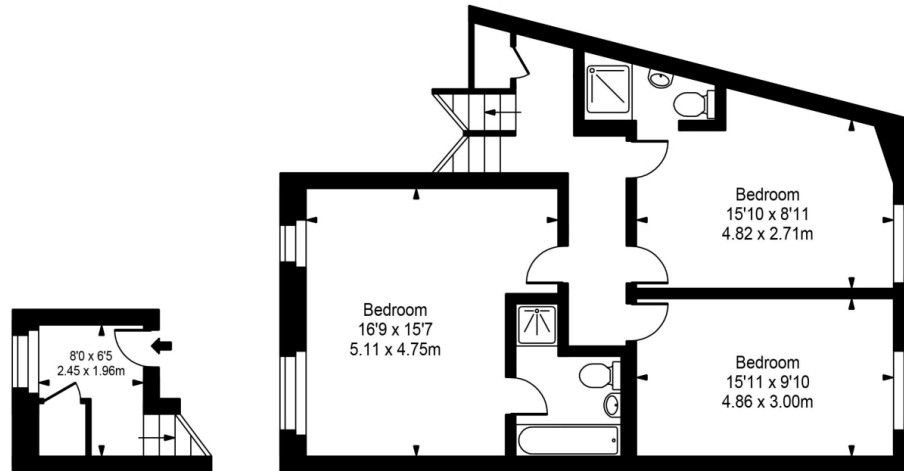
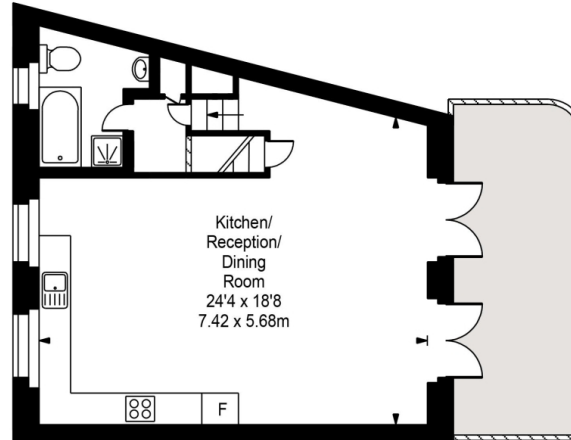
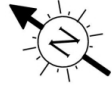








Englands Lane



Approx Gross Internal Area 1389 Sq Ft - 129.04 Sq M

FOR ILLUSTRATIVE PURPOSES ONLY. NOT TO SCALE.

Whilst every attempt has been made to ensure the accuracy of the floorplan shown, all measurements, positioning, fixtures, fittings and any other data shown are an approximate interpretation for illustrative purposes only and are not to scale. No responsibility is taken for any error, omission, miss-statement or use of data shown. Floor plan by www.bestangle.co.uk

Particulars

Property

Englands Lane, Belsize Park, London NW3
£925

Rooms



1



3



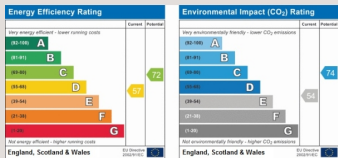
3

Features

- Three Bed, Three Bath
- Split Level
- Quiet Location
- Stunning Views

Information

Council Tax

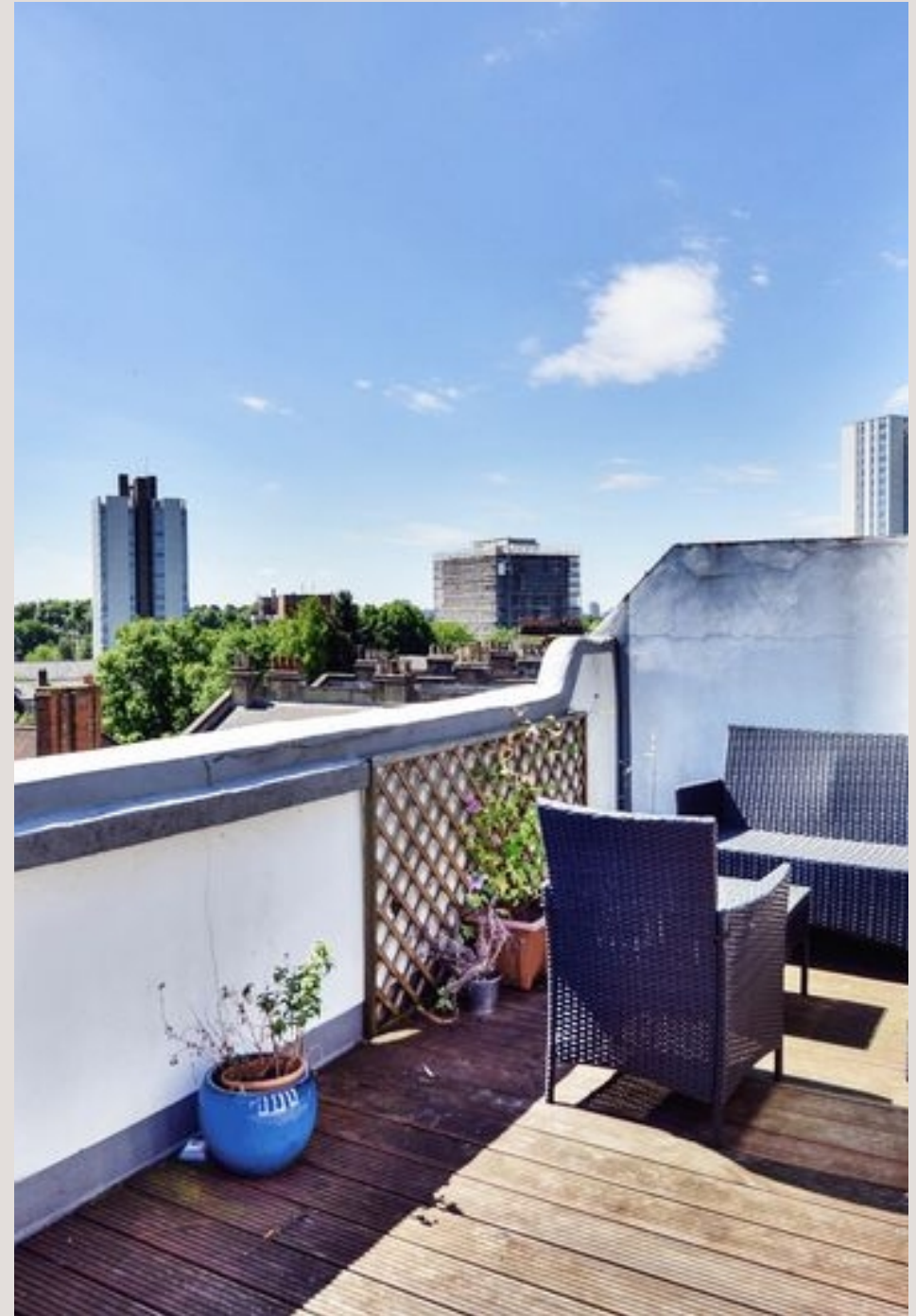


Oliver Kent

oliver.kent@vitaproperties.uk
+4477 7274 0351



Scan for our website





T: +4420 7759 2199

E: enquiries@vitaproperties.uk

Disclaimer: These particulars are prepared as a general guide for prospective purchasers or tenants and do not constitute, nor constitute part of, an offer or contract. All statements, descriptions, and measurements contained herein are given in good faith and are believed to be correct at the time of printing, but any intending purchaser or tenant should not rely on them as statements or representations of fact and must satisfy themselves by inspection or otherwise as to their correctness. Floor plans and photographs are for illustrative purposes only and may not be to scale. The position and size of doors, windows, appliances, and other features are approximate. Anti-Money Laundering (AML): In line with the Money Laundering, Terrorist Financing and Transfer of Funds Regulations 2017, we are required to carry out customer due diligence checks. Buyers/tenants will be asked to provide proof of identity, address, and source of funds before a sale or rental can be agreed. Data Protection (GDPR): Personal information supplied to Vita Properties will be processed in accordance with the General Data Protection Regulation (GDPR). Your details may be retained for legitimate business purposes relating to property services. Full details of our Privacy Policy are available on request.

All rights reserved.