



Sutherland Avenue  
MAIDA VALE, LONDON, W9

£700



An exceptional recently refurbished two double bedroom apartment with a situated on the first floor of this small, modern block.

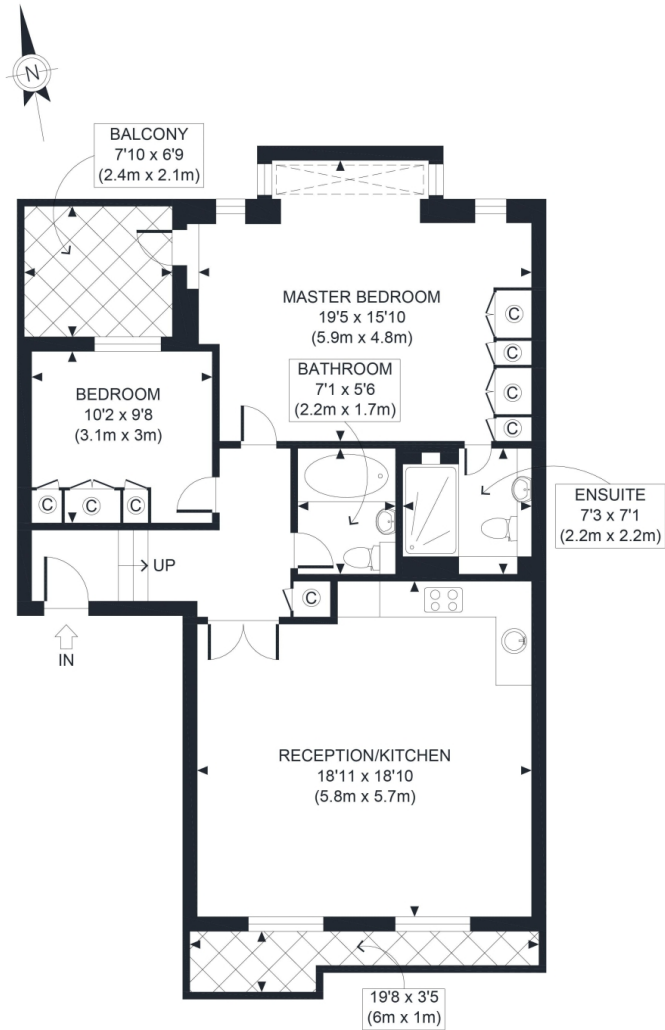
Located on the fringe of the vibrant and charming area of Maida Vale, the apartment is a short walk away from the pleasant waterside district of Little Venice and a number of public transport links, shops and amenities.

Presented in superb condition, the property has bright and spacious accommodation with air conditioning and luxury furnishings, featuring wood floors, carpeted bedrooms, and a state of the art entertainment system.









FIRST FLOOR  
 GROSS INTERNAL  
 FLOOR AREA 910 SQ FT

APPROX. GROSS INTERNAL FLOOR AREA 910 SQ FT / 85 SQM

Ref: Copyright **photo**plan

Disclaimer: Floor plan measurements are approximate and are for illustrative purposes only. While we do not doubt the floor plan accuracy and completeness, you or your advisors should conduct a careful, independent investigation of the property in respect of monetary valuation

# Particulars

## Property

Sutherland Avenue, Maida Vale, London, W9  
£700

## Rooms

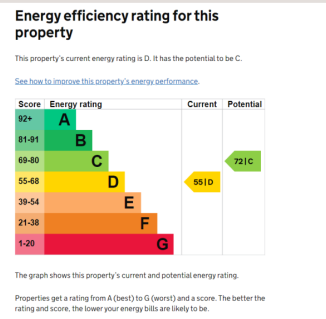


## Features

- Newly refurbished
- Wooden floors
- A short stroll from Little Venice & Notting Hill
- Easy access to the A40 and into the West End

## Information

Council Tax



Oliver Kent

oliver.kent@vitaproperties.uk  
+4477 7274 0351



Scan for our website





T: +4420 7759 2199

E: [enquiries@vitaproperties.uk](mailto:enquiries@vitaproperties.uk)

Disclaimer: These particulars are prepared as a general guide for prospective purchasers or tenants and do not constitute, nor constitute part of, an offer or contract. All statements, descriptions, and measurements contained herein are given in good faith and are believed to be correct at the time of printing, but any intending purchaser or tenant should not rely on them as statements or representations of fact and must satisfy themselves by inspection or otherwise as to their correctness. Floor plans and photographs are for illustrative purposes only and may not be to scale. The position and size of doors, windows, appliances, and other features are approximate. Anti-Money Laundering (AML): In line with the Money Laundering, Terrorist Financing and Transfer of Funds Regulations 2017, we are required to carry out customer due diligence checks. Buyers/tenants will be asked to provide proof of identity, address, and source of funds before a sale or rental can be agreed. Data Protection (GDPR): Personal information supplied to Vita Properties will be processed in accordance with the General Data Protection Regulation (GDPR). Your details may be retained for legitimate business purposes relating to property services. Full details of our Privacy Policy are available on request.

All rights reserved.