



St James Mansions
WEST END LANE, LONDON, NW6

£1,595,000



Beautifully presented Four double bedroom apartment set on the second floor of this well maintained mansion block.

The property offers the perfect lateral living offering in excess of 1850sq ft.

Spacious L shaped hallway with fireplace, two grand reception rooms with large sash windows benefitting from panoramic views, hardwood flooring and all original features to include high ceilings & fireplaces, spacious kitchen-diner with stone worktops, utility room, principal bedroom overlooking the communal gardens, three further bedrooms, fully tiled four piece family bathroom, fully tiled shower room.

Further benefits include: High ceilings throughout, many original features, hardwood flooring across the entire apartment, communal gardens, The property is situated minutes away from all the various cafes, restaurants, shops and transport links of West Hampstead (Jubilee Line) and Finchley Road (Jubilee & Metropolitan).











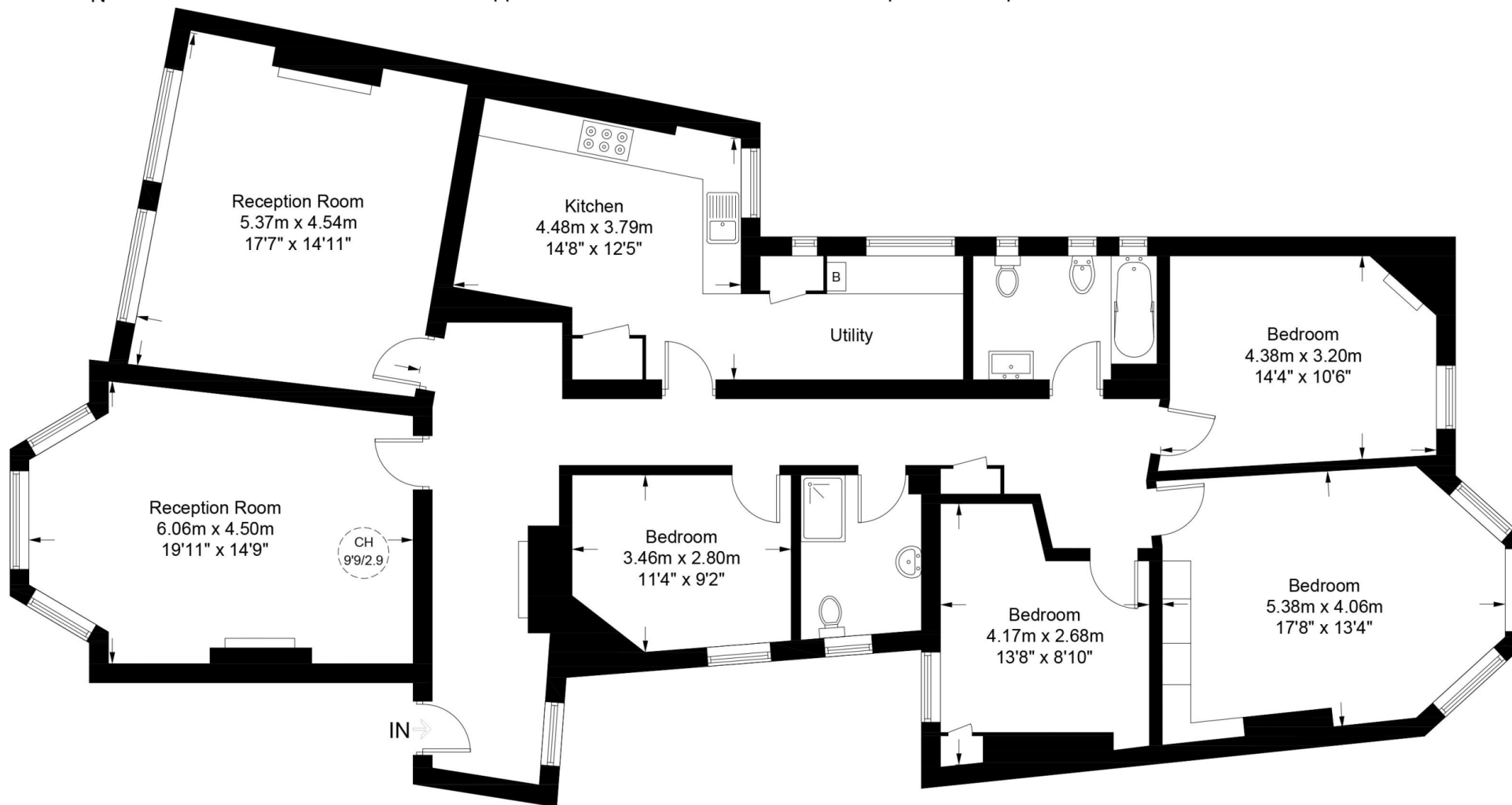
Scan for out video walkthrough





St. James Mansions, NW6

Approximate Gross Internal Area = 1877 sq ft / 174.4 sq m



Second Floor



**Certified
Property
Measurer**

This plan is for layout guidance only. Not drawn to scale unless stated. Windows and door openings are approximate. Whilst every care is taken in the preparation of this plan, please check all dimensions, shapes and compass bearings before making any decisions reliant upon them. (ID958004)

Particulars

Property

St James Mansions, West End Lane, London, NW6
£1,595,000

Rooms



2



2



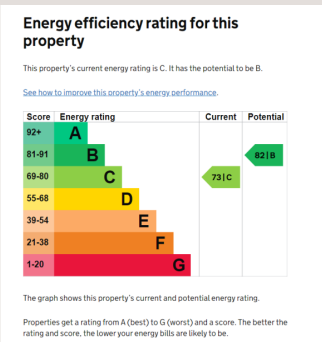
4

Features

- Stunning Mansion Block
- Four Double Bedrooms
- Two Bathrooms
- Two Grand Reception Rooms

Information

Council Tax



Scan for our website





T: +4420 7759 2199
E: enquiries@vitaproperties.uk

Disclaimer: These particulars are prepared as a general guide for prospective purchasers or tenants and do not constitute, nor constitute part of, an offer or contract. All statements, descriptions, and measurements contained herein are given in good faith and are believed to be correct at the time of printing, but any intending purchaser or tenant should not rely on them as statements or representations of fact and must satisfy themselves by inspection or otherwise as to their correctness. Floor plans and photographs are for illustrative purposes only and may not be to scale. The position and size of doors, windows, appliances, and other features are approximate. Anti-Money Laundering (AML): In line with the Money Laundering, Terrorist Financing and Transfer of Funds Regulations 2017, we are required to carry out customer due diligence checks. Buyers/tenants will be asked to provide proof of identity, address, and source of funds before a sale or rental can be agreed. Data Protection (GDPR): Personal information supplied to Vita Properties will be processed in accordance with the General Data Protection Regulation (GDPR). Your details may be retained for legitimate business purposes relating to property services. Full details of our Privacy Policy are available on request.

All rights reserved.