



Antrim Road

BELSIZE PARK, LONDON NW3

£1,350,000



This modern 3 bedroom flat in Belsize Park is an ideal home for individuals or families looking for convenience and style.

Located just seconds away from England's Lane and the tube station, this flat offers the perfect blend of peace and accessibility. With its first-floor setting, you'll enjoy communal gardens, a peaceful and private atmosphere, as well as plenty of natural light.

The flat features modern finishes and a spacious layout, making it the perfect place for comfortable and stylish living. Boasting a fully equipped eat-in kitchen with elegant granite countertops, the flat also offers two bathrooms, including one en-suite, an alarm system, intercom, and a spacious reception room complete with a cozy fireplace.

This flat is a fantastic investment opportunity that promises to provide you with a convenient, comfortable, and stylish lifestyle.



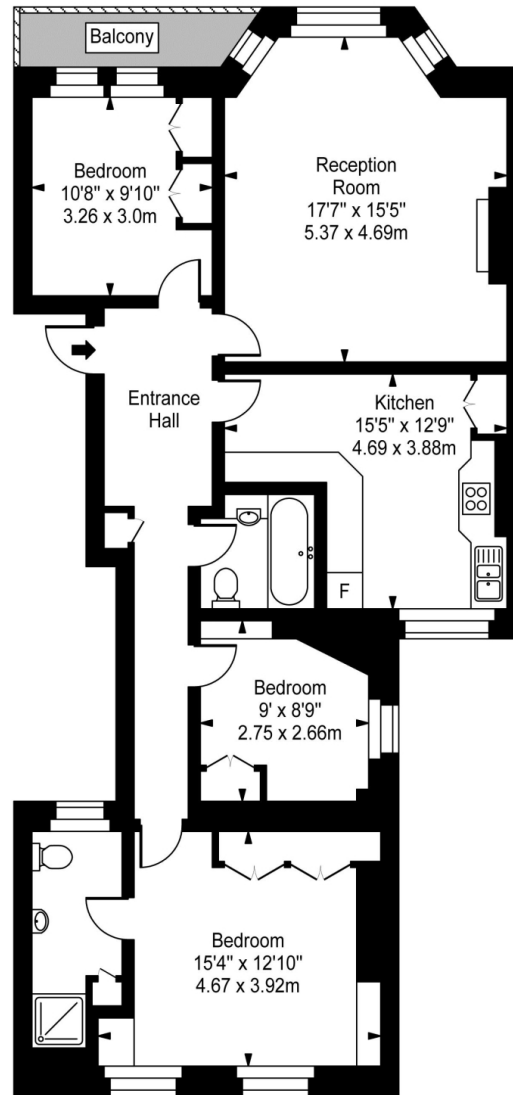
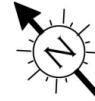








# Antrim Mansions



First Floor

Approx Gross Internal Area **1098 Sq Ft - 102.02 Sq M**

For Illustration Purposes Only - Not To Scale  
Floor plan by [www.creativeplanettk.com](http://www.creativeplanettk.com)

# Particulars

## Property

Antrim Road, Belsize Park, London NW3  
£1,350,000

## Rooms



1



2



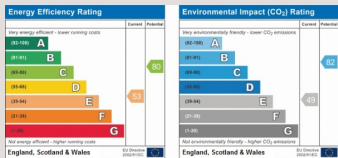
3

## Features

- First Floor
- Balcony
- Period Block
- Communal Gardens

## Information

Council Tax



Jonathan Singer

jonathan.singer@vitaproperties.uk  
+4478 8428 6414



Scan for our website





T: +4420 7759 2199  
E: [enquiries@vitaproperties.uk](mailto:enquiries@vitaproperties.uk)

Disclaimer: These particulars are prepared as a general guide for prospective purchasers or tenants and do not constitute, nor constitute part of, an offer or contract. All statements, descriptions, and measurements contained herein are given in good faith and are believed to be correct at the time of printing, but any intending purchaser or tenant should not rely on them as statements or representations of fact and must satisfy themselves by inspection or otherwise as to their correctness. Floor plans and photographs are for illustrative purposes only and may not be to scale. The position and size of doors, windows, appliances, and other features are approximate. Anti-Money Laundering (AML): In line with the Money Laundering, Terrorist Financing and Transfer of Funds Regulations 2017, we are required to carry out customer due diligence checks. Buyers/tenants will be asked to provide proof of identity, address, and source of funds before a sale or rental can be agreed. Data Protection (GDPR): Personal information supplied to Vita Properties will be processed in accordance with the General Data Protection Regulation (GDPR). Your details may be retained for legitimate business purposes relating to property services. Full details of our Privacy Policy are available on request.

All rights reserved.