



Clive Court

MAIDA VALE, LONDON, W9

£1,350,000



No upper chain - A truly magnificent lateral apartment, having been recently modernised to elite standards and boasting impeccable attention to detail, this property offers two generous sized bedrooms and a 28 ft reception room.

Using some of the finest material this property offers a fully fitted hand crafted designer kitchen offering all the latest modern conveniences and two bathrooms featuring imported Italian designed tiles and top of the range fixtures and fittings.

Situated in this well-managed block, which benefits from lift access and portorage, this property is positioned in close proximity to the shops and amenities of Little Venice with Warwick Avenue and Maida Vale Underground stations in equal distance (Bakerloo Line)





No upper chain - A truly magnificent lateral apartment, having been recently modernised to elite standards and boasting impeccable attention to detail, this property offers two generous sized bedrooms and a 28 ft reception room.

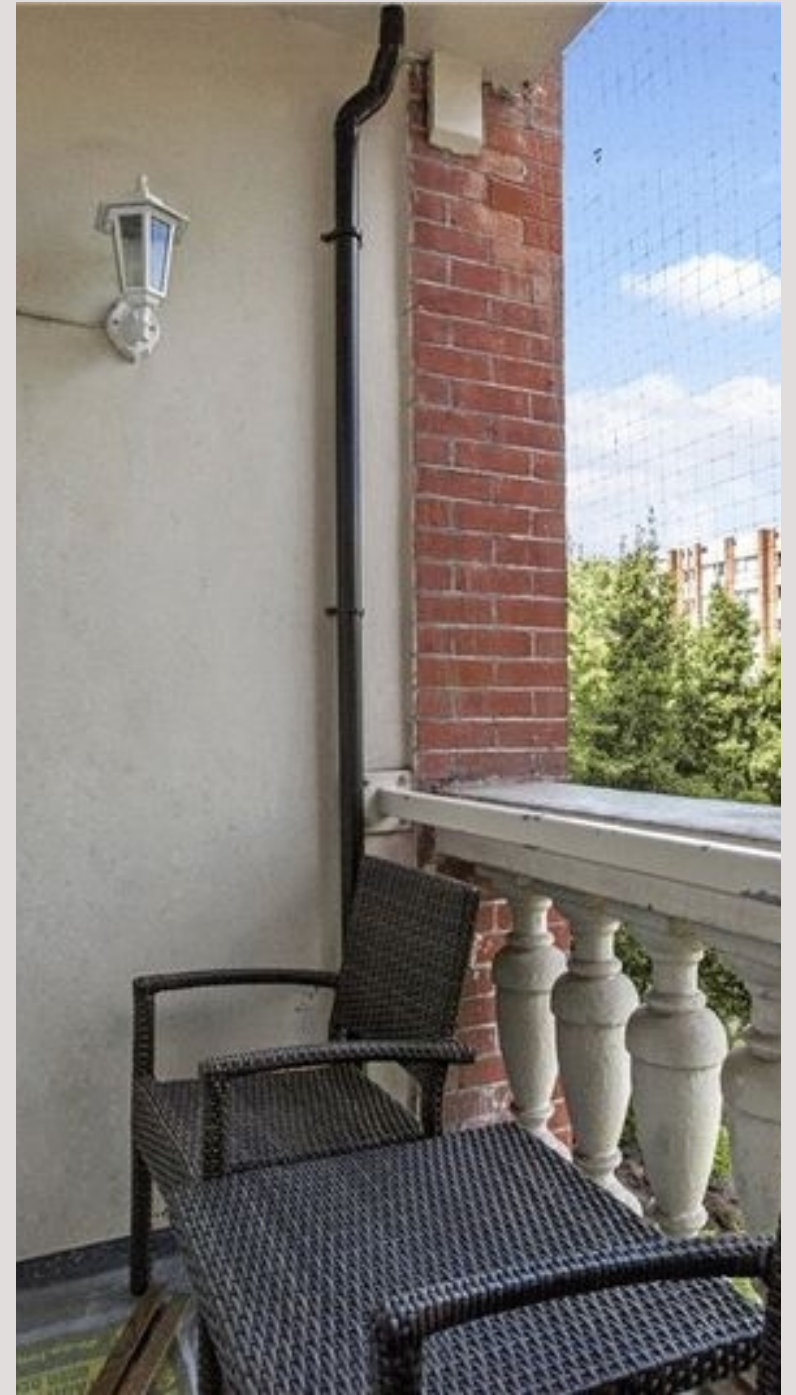
Using some of the finest material this property offers a fully fitted hand crafted designer kitchen offering all the latest modern conveniences and two bathrooms featuring imported Italian designed tiles and top of the range fixtures and fittings.

Situated in this well-managed block, which benefits from lift access and portorage, this property is positioned in close proximity to the shops and amenities of Little Venice with Warwick Avenue and Maida Vale Underground stations in equal distance (Bakerloo Line)

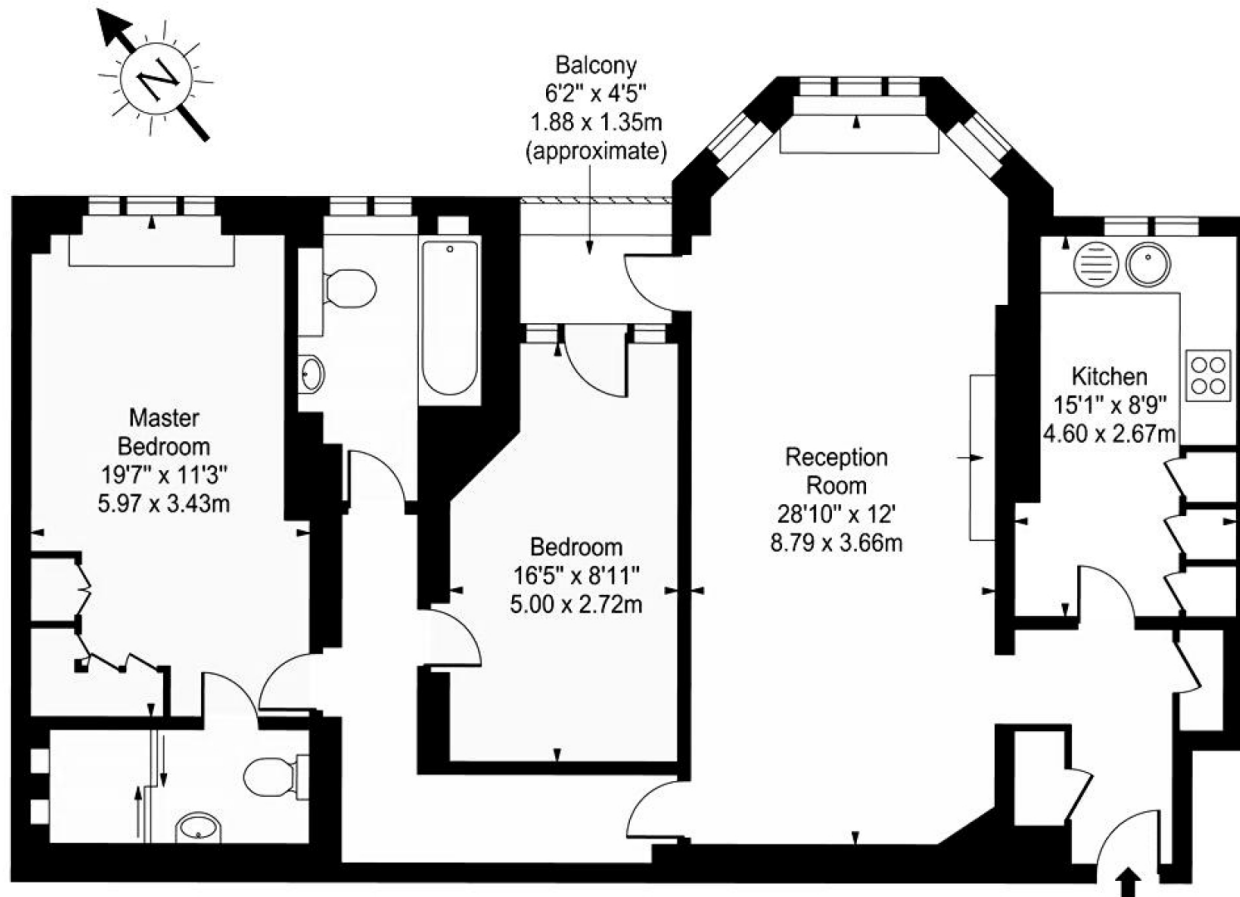








Clive Court, W9



Third Floor

Approx Gross Internal Area 1172 Sq Ft - 109.02 Sq M

For Illustration Purposes Only - Not To Scale Floor Plan by www.nogaphotostudio.com Ref: No.27057

This floor plan should be used as a general outline for guidance only. Any intending purchaser or lessee should satisfy themselves by inspection, searches, enquiries and full survey as to the correctness of each statement. Any areas, measurements or distances quoted are approximate and should not be used to value a property or be the basis of any sale or let.

Particulars

Property

Clive Court, Maida Vale, London, W9
£1,350,000

Rooms

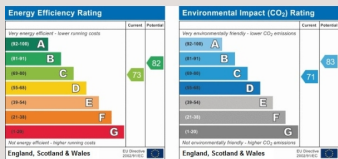


Features

- Newly refurbished
- Portage
- Lift and entry phone
- Communal hot water and heating

Information

Council Tax



Jonathan Singer

jonathan.singer@vitaproperties.uk
+4478 8428 6414



Scan for our website





T: +4420 7759 2199

E: enquiries@vitaproperties.uk

Disclaimer: These particulars are prepared as a general guide for prospective purchasers or tenants and do not constitute, nor constitute part of, an offer or contract. All statements, descriptions, and measurements contained herein are given in good faith and are believed to be correct at the time of printing, but any intending purchaser or tenant should not rely on them as statements or representations of fact and must satisfy themselves by inspection or otherwise as to their correctness. Floor plans and photographs are for illustrative purposes only and may not be to scale. The position and size of doors, windows, appliances, and other features are approximate. Anti-Money Laundering (AML): In line with the Money Laundering, Terrorist Financing and Transfer of Funds Regulations 2017, we are required to carry out customer due diligence checks. Buyers/tenants will be asked to provide proof of identity, address, and source of funds before a sale or rental can be agreed. Data Protection (GDPR): Personal information supplied to Vita Properties will be processed in accordance with the General Data Protection Regulation (GDPR). Your details may be retained for legitimate business purposes relating to property services. Full details of our Privacy Policy are available on request.

All rights reserved.