



Nottingham Place
MARYLEBONE, LONDON, W1

£1,200



Available immediately is this this newly refurbished one bedroom flat, situated on the first floor of an impressive period building in the heart of Marylebone.

The property benefits from a large reception room with wooden flooring and high ceilings, fully fitted kitchen, double bedroom with built in storage and bathroom. Baker Street Underground Station is approx 0.3 miles away and is served by Bakerloo, Jubilee, Hammersmith & City, Circle and Metropolitan Line.





Available immediately is this this newly refurbished one bedroom flat, situated on the first floor of an impressive period building in the heart of Marylebone.

The property benefits from a large reception room with wooden flooring and high ceilings, fully fitted kitchen, double bedroom with built in storage and bathroom. Baker Street Underground Station is approx 0.3 miles away and is served by Bakerloo, Jubilee, Hammersmith & City, Circle and Metropolitan Line.

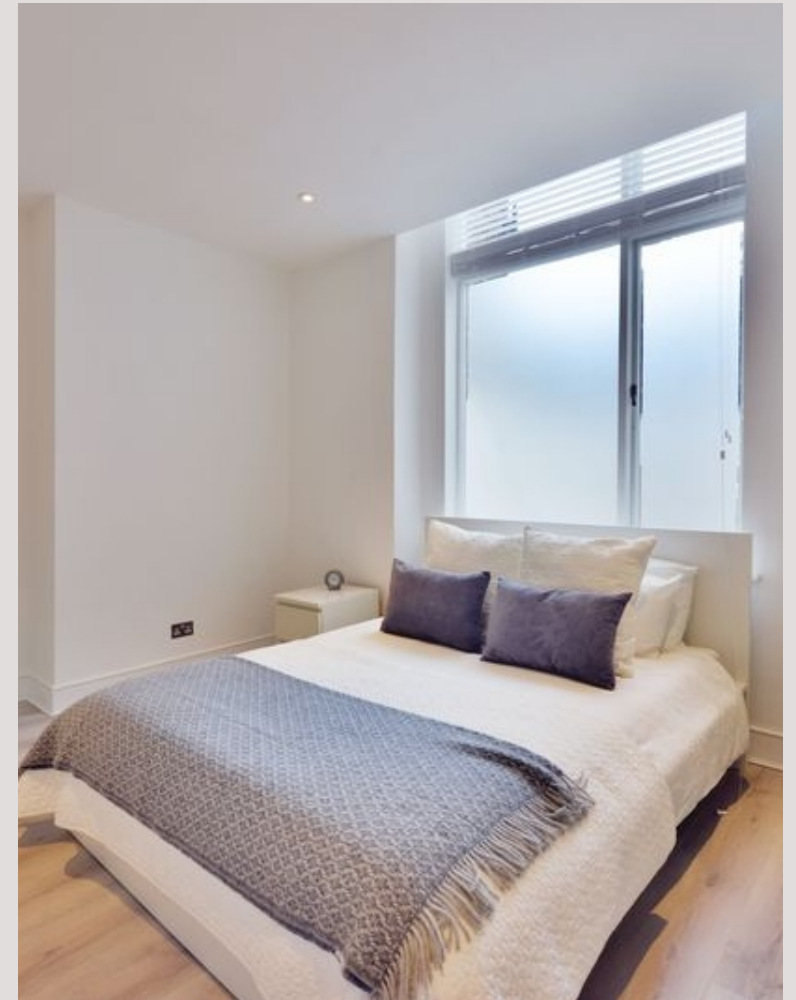




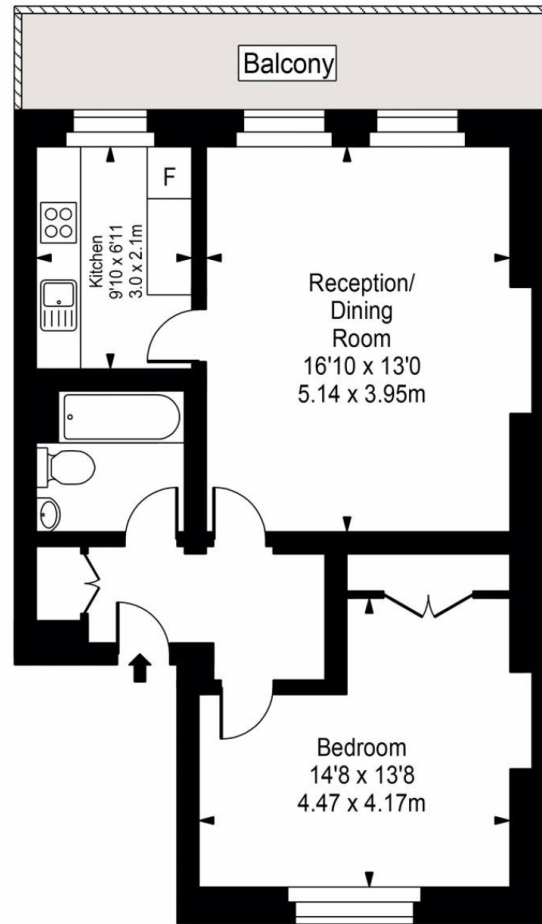
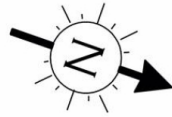




Scan for out video walkthrough



Nottingham Place



First Floor



Approx Gross Internal Area **643 Sq Ft - 59.73 Sq M**

FOR ILLUSTRATIVE PURPOSES ONLY. NOT TO SCALE.

Whilst every attempt has been made to ensure the accuracy of the floorplan shown, all measurements, positioning, fixtures, fittings and any other data shown are an approximate interpretation for illustrative purposes only and are not to scale. No responsibility is taken for any error, omission, miss-statement or use of data shown. Floor plan by www.bestangle.co.uk

Particulars

Property

Nottingham Place, Marylebone, London, W1
£1,200

Rooms

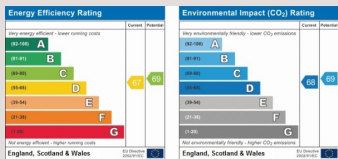


Features

- Newly refurbished
- Wooden floors throughout
- Moments from Marylebone High Street
- Managed

Information

Council Tax



Scan for our website





T: +4420 7759 2199

E: enquiries@vitaproperties.uk

Disclaimer: These particulars are prepared as a general guide for prospective purchasers or tenants and do not constitute, nor constitute part of, an offer or contract. All statements, descriptions, and measurements contained herein are given in good faith and are believed to be correct at the time of printing, but any intending purchaser or tenant should not rely on them as statements or representations of fact and must satisfy themselves by inspection or otherwise as to their correctness. Floor plans and photographs are for illustrative purposes only and may not be to scale. The position and size of doors, windows, appliances, and other features are approximate. Anti-Money Laundering (AML): In line with the Money Laundering, Terrorist Financing and Transfer of Funds Regulations 2017, we are required to carry out customer due diligence checks. Buyers/tenants will be asked to provide proof of identity, address, and source of funds before a sale or rental can be agreed. Data Protection (GDPR): Personal information supplied to Vita Properties will be processed in accordance with the General Data Protection Regulation (GDPR). Your details may be retained for legitimate business purposes relating to property services. Full details of our Privacy Policy are available on request.

All rights reserved.