



Fitzjohns Avenue  
HAMPSTEAD, LONDON NW3

£1,100



Presenting a selection of one, two, three and four bed apartments, set within the excited new period conversion set on the beautiful, tree-lined street Fitzjohns Avenue, NW8.

This brand new conversion boasts an incredible finish to each property, top-notch fixtures and fittings and many offering private terraces/balconies. Each property boast wood floors throughout, large windows, integrated kitchen appliances and fully-tiled bathrooms. All apartments are offered on either a furnished or unfurnished basis, and all furnishings are of a great standard.

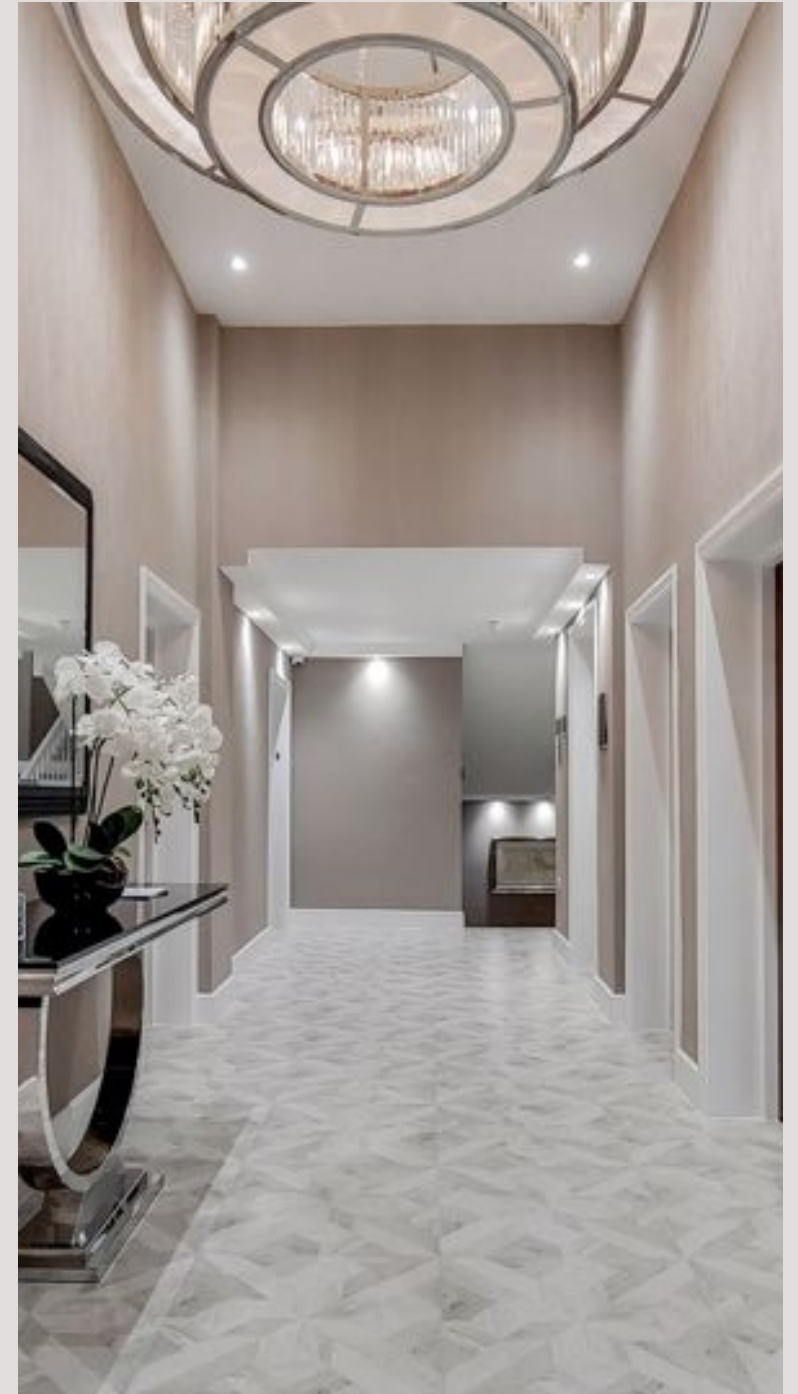
Based within walking distance to the many amenities of Hampstead High Street, Finchley Road and with excellent transport links via the Jubilee line

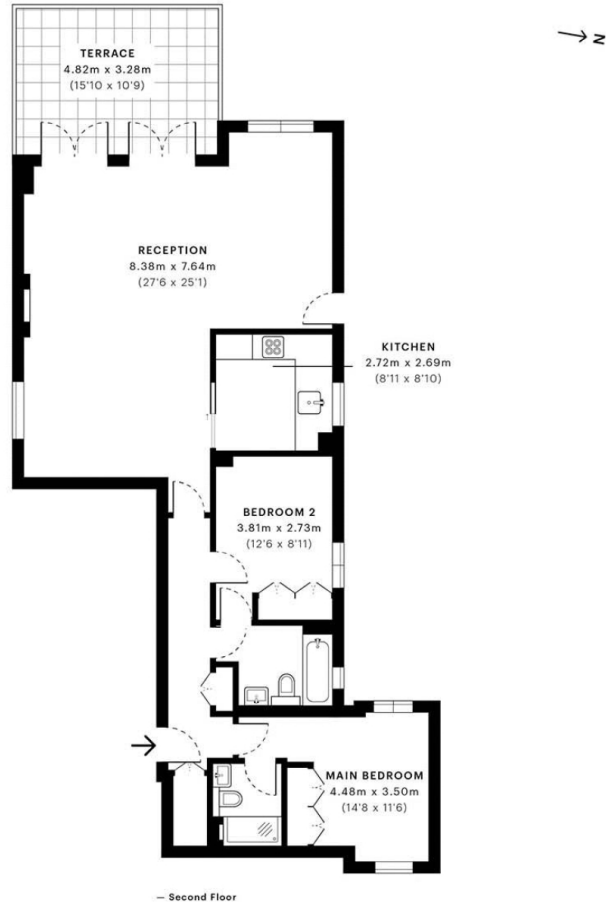












**GROSS INTERNAL AREA (GIA)**  
The footprint of the property  
96.34 sqm / 1037.00 sqft

**NET INTERNAL AREA (NIA)**  
Excludes walls and external features  
Includes washrooms, restricted head height  
90.93 sqm / 978.76 sqft

**EXTERNAL STRUCTURAL FEATURES**  
Balconies, terraces, verandas etc.  
15.65 sqm / 168.46 sqft

**RESTRICTED HEAD HEIGHT**  
Limited use areas under 1.5m  
0.00 sqm / 0.00 sqft



Spec Verified floor plans are produced in accordance with Royal Institution of Chartered Surveyors' Property Measurement Standards. Plots and gardens are illustrative only and excluded from all area calculations. Due to rounding, numbers may not add up precisely. All measurements shown for the individual room lengths and widths are the maximum points of measurements captured in the scan.

IPMS 3B RESIDENTIAL 113.60 sqm / 1222.78 sqft  
IPMS 3C RESIDENTIAL 108.60 sqm / 1168.96 sqft

SPEC ID: 5R3539F07E290DBAD68BDB

# Particulars

## Property

Fitzjohns Avenue, Hampstead, London NW3  
£1,100

## Rooms

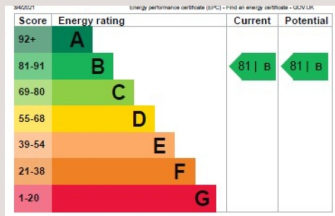


## Features

- Lift
- High Spec
- Moments to Hampstead, Belsize Village and Swiss Cottage
- Communal Gardens

## Information

Council Tax



Oliver Kent

oliver.kent@vitaproperties.uk  
+4477 7274 0351



Scan for our website





T: +4420 7759 2199

E: [enquiries@vitaproperties.uk](mailto:enquiries@vitaproperties.uk)

Disclaimer: These particulars are prepared as a general guide for prospective purchasers or tenants and do not constitute, nor constitute part of, an offer or contract. All statements, descriptions, and measurements contained herein are given in good faith and are believed to be correct at the time of printing, but any intending purchaser or tenant should not rely on them as statements or representations of fact and must satisfy themselves by inspection or otherwise as to their correctness. Floor plans and photographs are for illustrative purposes only and may not be to scale. The position and size of doors, windows, appliances, and other features are approximate. Anti-Money Laundering (AML): In line with the Money Laundering, Terrorist Financing and Transfer of Funds Regulations 2017, we are required to carry out customer due diligence checks. Buyers/tenants will be asked to provide proof of identity, address, and source of funds before a sale or rental can be agreed. Data Protection (GDPR): Personal information supplied to Vita Properties will be processed in accordance with the General Data Protection Regulation (GDPR). Your details may be retained for legitimate business purposes relating to property services. Full details of our Privacy Policy are available on request.

All rights reserved.