



Cresta House

FINCHLEY ROAD, SWISS COTTAGE, LONDON, NW3

£950



A stunning two bed duplex apartment situated within this popular portered block in the heart of Swiss Cottage.

The property offers luxury living accommodation throughout, comprising two large bedrooms, a large open-plan reception room & kitchen with direct access to one of the three balconies (other two are off of both bedrooms), a modern family bathroom and guest WC.

Located directly over the road from Swiss Cottage underground station and just seconds from the many amenities.





A stunning two bed duplex apartment situated within this popular portered block in the heart of Swiss Cottage.

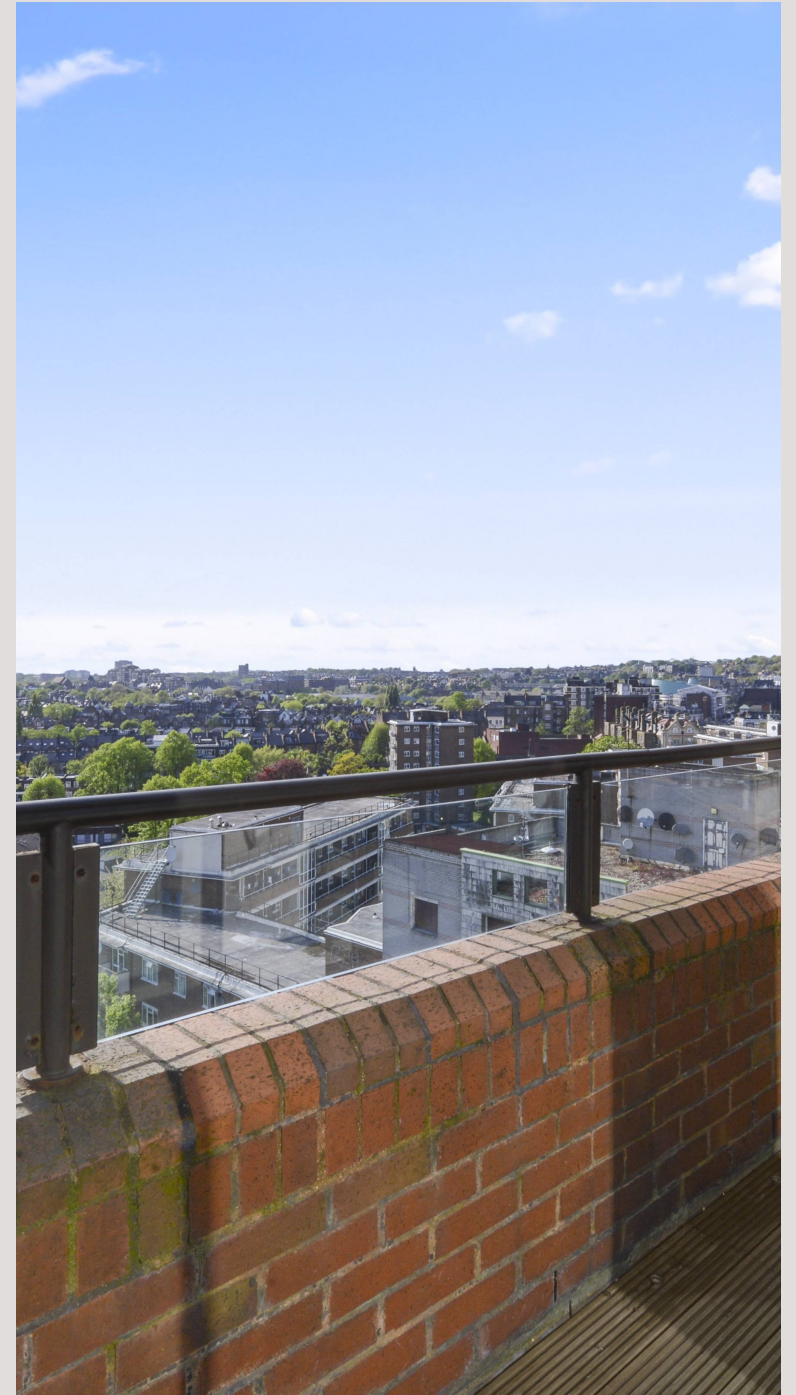
The property offers luxury living accommodation throughout, comprising two large bedrooms, a large open-plan reception room & kitchen with direct access to one of the three balconies (other two are off of both bedrooms), a modern family bathroom and guest WC.

Located directly over the road from Swiss Cottage underground station and just seconds from the many amenities.



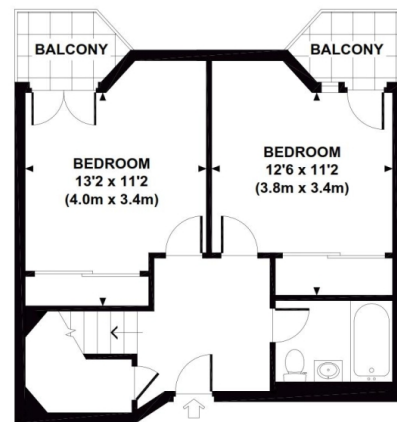




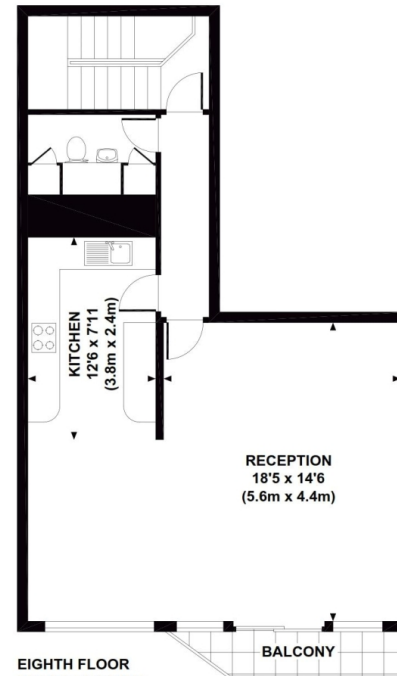


CRESTA HOUSE

Approximate Gross Internal Area 1075 sq ft / 99.9 sq m



SEVENTH FLOOR
GROSS INTERNAL
FLOOR AREA 442 SQ FT



EIGHTH FLOOR
GROSS INTERNAL
FLOOR AREA 633 SQ FT

Particulars

Property

Cresta House, Finchley Road, Swiss Cottage, London, NW3
£950

Rooms



1



2



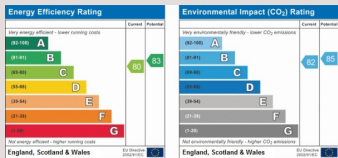
2

Features

- Two Bed, Two Bath
- Located directly over the road from Swiss Cottage underground
- Wooden floors
- Newly refurbished

Information

Council Tax



Oliver Kent

oliver.kent@vitaproperties.uk
+4477 7274 0351



Scan for our website





T: +4420 7759 2199
E: enquiries@vitaproperties.uk

Disclaimer: These particulars are prepared as a general guide for prospective purchasers or tenants and do not constitute, nor constitute part of, an offer or contract. All statements, descriptions, and measurements contained herein are given in good faith and are believed to be correct at the time of printing, but any intending purchaser or tenant should not rely on them as statements or representations of fact and must satisfy themselves by inspection or otherwise as to their correctness. Floor plans and photographs are for illustrative purposes only and may not be to scale. The position and size of doors, windows, appliances, and other features are approximate. Anti-Money Laundering (AML): In line with the Money Laundering, Terrorist Financing and Transfer of Funds Regulations 2017, we are required to carry out customer due diligence checks. Buyers/tenants will be asked to provide proof of identity, address, and source of funds before a sale or rental can be agreed. Data Protection (GDPR): Personal information supplied to Vita Properties will be processed in accordance with the General Data Protection Regulation (GDPR). Your details may be retained for legitimate business purposes relating to property services. Full details of our Privacy Policy are available on request.

All rights reserved.