



Springfield Road
ST JOHNS WOOD, LONDON NW8

£6,000



A delightful six bedroom detached house arranged over three floors with an internal space of 4316 sq ft. The house benefits from excellent entertaining space with double reception providing direct access to a mature landscaped rear garden, an eat-in kitchen, family room, guest wc and integral garage.

Springfield Road is located within walking distance to St John's Wood High Street and underground Station (Jubilee Line) as well as being only a moments walk from the American School.





A delightful six bedroom detached house arranged over three floors with an internal space of 4316 sq ft. The house benefits from excellent entertaining space with double reception providing direct access to a mature landscaped rear garden, an eat-in kitchen, family room, guest wc and integral garage.

Springfield Road is located within walking distance to St John's Wood High Street and underground Station (Jubilee Line) as well as being only a moments walk from the American School.









Scan for out video walkthrough



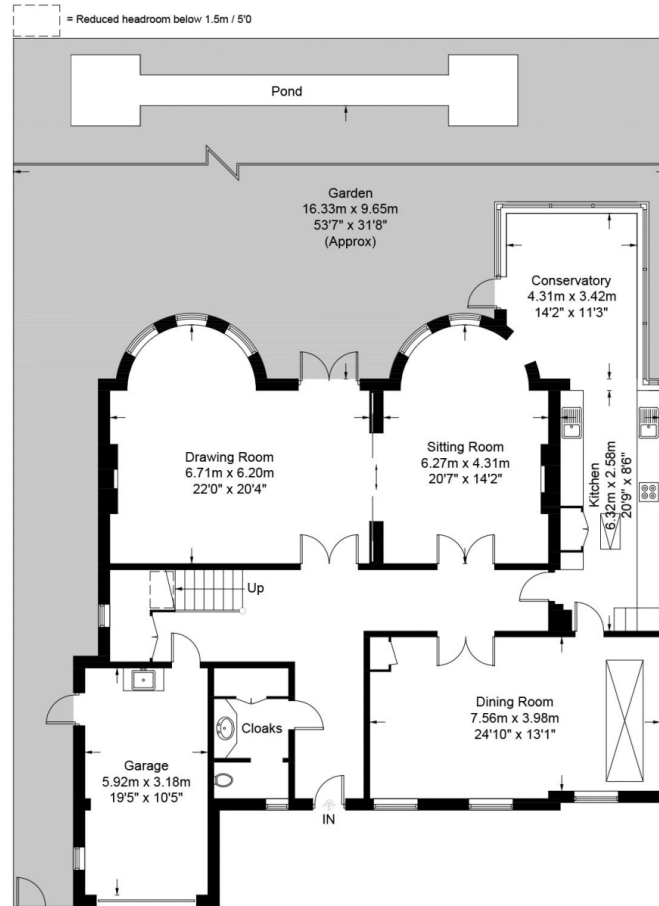


Springfield Road, NW8

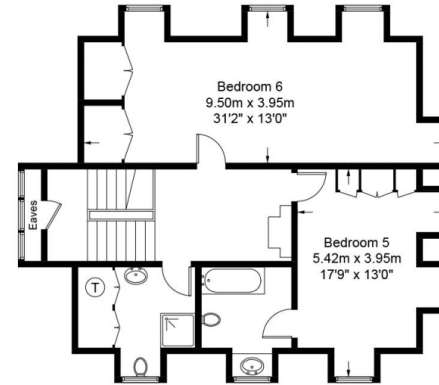
Approximate Gross Internal Area = 4224 sq ft / 392.4 sq m
(Excluding Reduced Headroom/ Eaves / Including Garage)

Reduced Headroom = 7 sq ft / 0.7 sq m

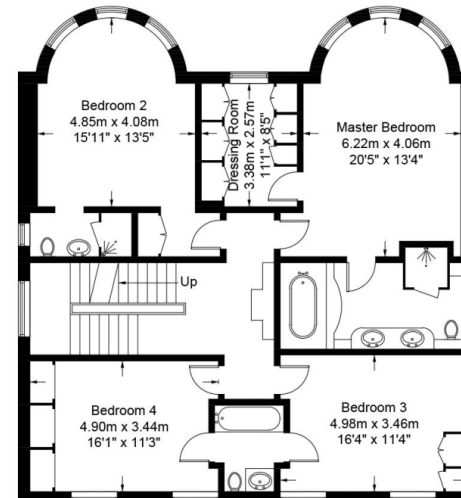
Total = 4231 sq ft / 393.1 sq m



Ground Floor



Second Floor



First Floor



This plan is for layout guidance only. Not drawn to scale unless stated. Windows and door openings are approximate. Whilst every care is taken in the preparation of this plan, please check all dimensions, shapes and compass bearings before making any decisions reliant upon them. (ID933954)

Particulars

Property

Springfield Road, St Johns Wood, London NW8
£6,000

Rooms



3



5



6

Features

- Detached
- Parking, Garage and Garden
- Moments to Abbey Road
- Transport Links close by

Information

Council Tax



Scan for our website





T: +4420 7759 2199

E: enquiries@vitaproperties.uk

Disclaimer: These particulars are prepared as a general guide for prospective purchasers or tenants and do not constitute, nor constitute part of, an offer or contract. All statements, descriptions, and measurements contained herein are given in good faith and are believed to be correct at the time of printing, but any intending purchaser or tenant should not rely on them as statements or representations of fact and must satisfy themselves by inspection or otherwise as to their correctness. Floor plans and photographs are for illustrative purposes only and may not be to scale. The position and size of doors, windows, appliances, and other features are approximate. Anti-Money Laundering (AML): In line with the Money Laundering, Terrorist Financing and Transfer of Funds Regulations 2017, we are required to carry out customer due diligence checks. Buyers/tenants will be asked to provide proof of identity, address, and source of funds before a sale or rental can be agreed. Data Protection (GDPR): Personal information supplied to Vita Properties will be processed in accordance with the General Data Protection Regulation (GDPR). Your details may be retained for legitimate business purposes relating to property services. Full details of our Privacy Policy are available on request.

All rights reserved.