



Eyre Court

FINCHLEY ROAD, LONDON NW8

£1,850,000



Situated on the ground floor of this highly sought after purpose built portered building is this three bedroom, three bathroom apartment which is located on Finchley Road, accessed from a carriage drive opposite St John's Wood Underground Station (Jubilee line).

The accommodation comprises a recently refurbished kitchen, spacious reception room, dining room and utility room.

The apartment also benefits from a share of freehold, communal garden, 24 hour porter, communal heating and hot water, and off street parking on a first come first served basis.

Eyre Court is conveniently located 0.2 miles from the amenities and cafe's of St Johns Wood High Street.

St Johns Wood underground station (Jubilee Line) is 0.1 miles from the property which provides access to the West End and Canary Wharf.





Situated on the ground floor of this highly sought after purpose built portered building is this three bedroom, three bathroom apartment which is located on Finchley Road, accessed from a carriage drive opposite St John's Wood Underground Station (Jubilee line).

The accommodation comprises a recently refurbished kitchen, spacious reception room, dining room and utility room.

The apartment also benefits from a share of freehold, communal garden, 24 hour porter, communal heating and hot water, and off street parking on a first come first served basis.

Eyre Court is conveniently located 0.2 miles from the amenities and cafe's of St Johns Wood High Street.

St Johns Wood underground station (Jubilee Line) is 0.1 miles from the property which provides access to the West End and Canary Wharf.









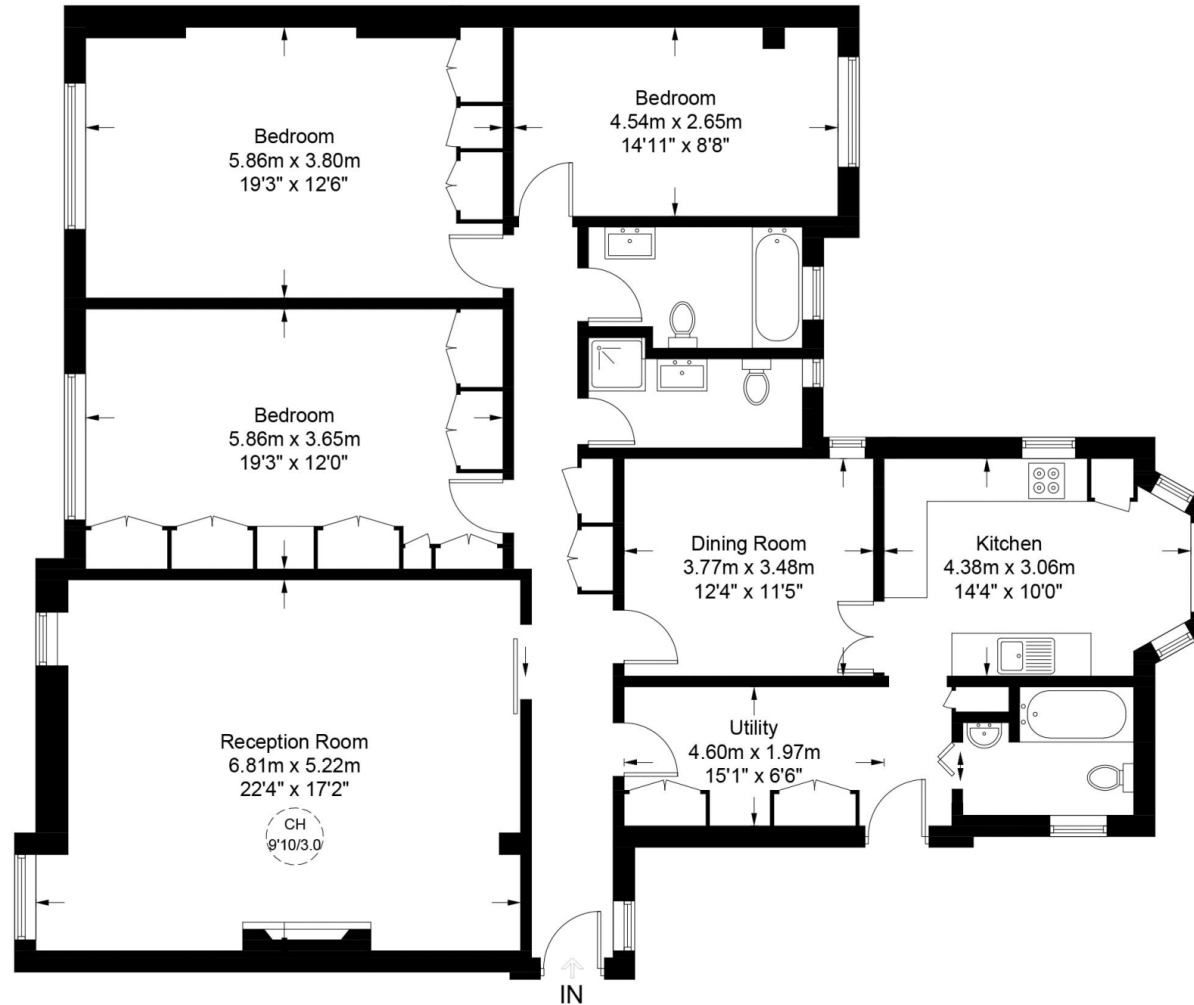
Scan for out video walkthrough





Eyre Court ,NW8

Approximate Gross Internal Area = 1674 sq ft / 155.5 sq m



Ground Floor



**Certified
Property
Measurer**

This plan is for layout guidance only. Not drawn to scale unless stated. Windows and door openings are approximate. Whilst every care is taken in the preparation of this plan, please check all dimensions, shapes and compass bearings before making any decisions reliant upon them. (ID927225)

Particulars

Property

Eyre Court, Finchley Road, London NW8
£1,850,000

Rooms



2



3



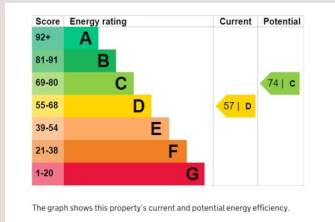
3

Features

- Three Bedrooms
- Two Bathrooms
- Reception Room
- Communal Heating & Hot Water

Information

Council Tax



Jonathan Singer

jonathan.singer@vitaproperties.uk
+4478 8428 6414



Scan for our website





T: +4420 7759 2199

E: enquiries@vitaproperties.uk

Disclaimer: These particulars are prepared as a general guide for prospective purchasers or tenants and do not constitute, nor constitute part of, an offer or contract. All statements, descriptions, and measurements contained herein are given in good faith and are believed to be correct at the time of printing, but any intending purchaser or tenant should not rely on them as statements or representations of fact and must satisfy themselves by inspection or otherwise as to their correctness. Floor plans and photographs are for illustrative purposes only and may not be to scale. The position and size of doors, windows, appliances, and other features are approximate. Anti-Money Laundering (AML): In line with the Money Laundering, Terrorist Financing and Transfer of Funds Regulations 2017, we are required to carry out customer due diligence checks. Buyers/tenants will be asked to provide proof of identity, address, and source of funds before a sale or rental can be agreed. Data Protection (GDPR): Personal information supplied to Vita Properties will be processed in accordance with the General Data Protection Regulation (GDPR). Your details may be retained for legitimate business purposes relating to property services. Full details of our Privacy Policy are available on request.

All rights reserved.