



Palgrave Gardens
REGENTS PARK, LONDON NW1
£8,000



Available 05 September 2024 is this contemporary penthouse apartment situated on the seventh floor of a modern gated development, located minutes from the open spaces of Regents Park. The property, overlooks the communal gardens and comprises four double bedrooms (three rooms have balconies), three bathrooms (two en-suites), a separate eat in kitchen, a guest WC, and a large reception room.

Further benefits include wooden floors, a huge South West facing roof terrace, 24hr porter, lift, parking and residents only gym and swimming pool.

Palgrave Gardens occupies a quiet position adjacent to Regent's Park and benefits from easy access to Baker Street underground station, Marylebone railway station and the restaurants, shops and amenities of Marylebone High Street and the West End.

Offered on an unfurnished basis





Available 05 September 2024 is this contemporary penthouse apartment situated on the seventh floor of a modern gated development, located minutes from the open spaces of Regents Park. The property, overlooks the communal gardens and comprises four double bedrooms (three rooms have balconies), three bathrooms (two en-suites), a separate eat in kitchen, a guest WC, and a large reception room. Further benefits include wooden floors, a huge South West facing roof terrace, 24hr porter, lift, parking and residents only gym and swimming pool.

Palgrave Gardens occupies a quiet position adjacent to Regent's Park and benefits from easy access to Baker Street underground station, Marylebone railway station and the restaurants, shops and amenities of Marylebone High Street and the West End.

Offered on an unfurnished basis





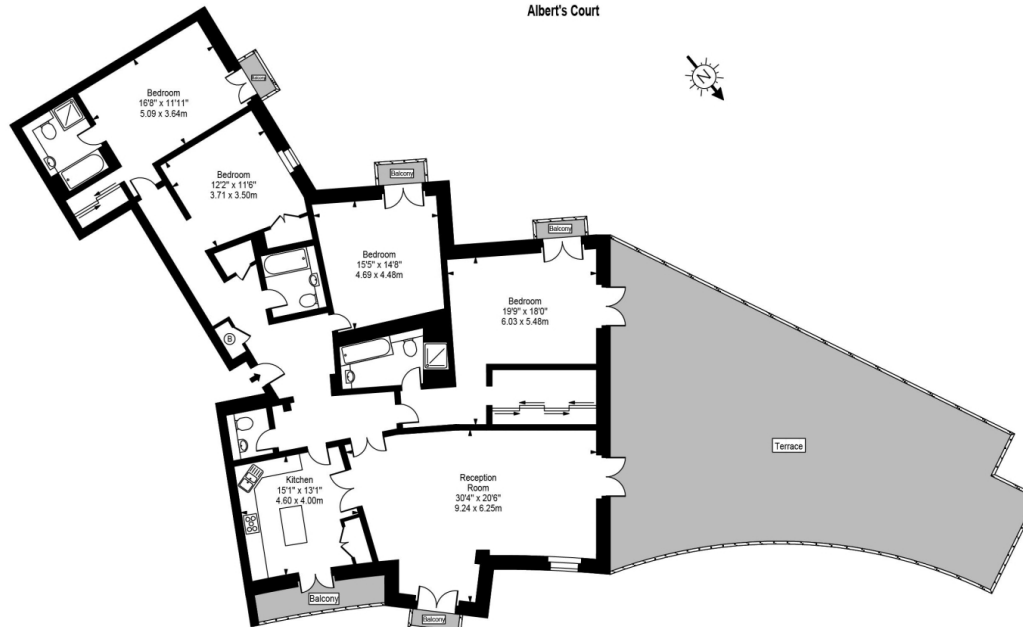




Scan for out video walkthrough



Albert's Court



 Approx Gross Internal Area 2336 Sq Ft - 217.01 Sq M
For Illustration Purposes Only - Not To Scale
Floor plan by www.creativeplanetk.com

Particulars

Property

Palgrave Gardens, Regents Park, London NW1
£8,000

Rooms



1



3



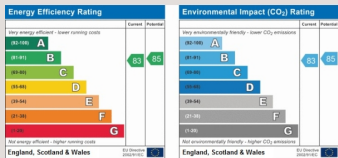
4

Features

- Swimming pool, Gym and Porter
- South West facing private terrace
- Parking
- Communal gardens

Information

Council Tax



Zoe Browne

zoe.browne@vitaproperties.uk

+44 7880 277371



Scan for our website





T: +4420 7759 2199
E: enquiries@vitaproperties.uk

Disclaimer: These particulars are prepared as a general guide for prospective purchasers or tenants and do not constitute, nor constitute part of, an offer or contract. All statements, descriptions, and measurements contained herein are given in good faith and are believed to be correct at the time of printing, but any intending purchaser or tenant should not rely on them as statements or representations of fact and must satisfy themselves by inspection or otherwise as to their correctness. Floor plans and photographs are for illustrative purposes only and may not be to scale. The position and size of doors, windows, appliances, and other features are approximate. Anti-Money Laundering (AML): In line with the Money Laundering, Terrorist Financing and Transfer of Funds Regulations 2017, we are required to carry out customer due diligence checks. Buyers/tenants will be asked to provide proof of identity, address, and source of funds before a sale or rental can be agreed. Data Protection (GDPR): Personal information supplied to Vita Properties will be processed in accordance with the General Data Protection Regulation (GDPR). Your details may be retained for legitimate business purposes relating to property services. Full details of our Privacy Policy are available on request.

All rights reserved.