



Arkwright Road  
HAMPSTEAD, LONDON NW3

£2,900



Stunning four-bedroom garden apartment situated in a luxurious new build development offering over 2,240 sq ft of living accommodation.

Benefiting from four double bedrooms two of which face out onto the landscaped gardens, master bedroom with a separate dressing room with built in wardrobes and en-suite bathroom, three further bedrooms each with built in wardrobes and their own shower rooms, a guest WC and separate utility room. Offering comfort cooling and integrated WiFi throughout. The apartment comes with one off street parking space and use of the communal garden

Arkwright Road is located close to the local amenities of Hampstead Village and Hampstead tube station, Finchley Road tube and Finchley Road & Frognal Overground.

Available 16th January on a furnished or unfurnished basis





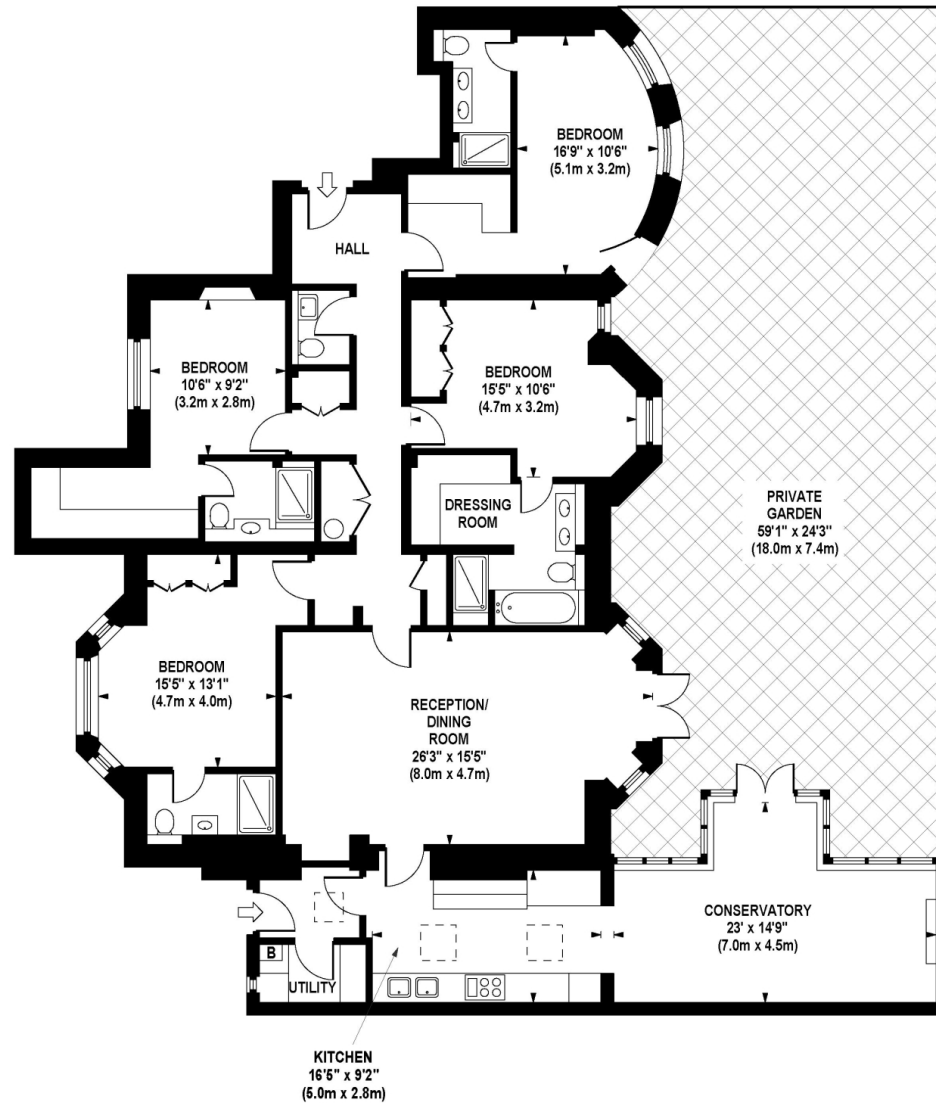






**ARKWRIGHT ROAD**

Approximate Gross Internal Area 2240 sq ft / 208.1 sq m



**GROUND FLOOR  
GROSS INTERNAL  
FLOOR AREA 2240 SQ FT**

Although every attempt has been made to ensure accuracy, all measurements are approximate. The floor plan's for illustrative purposes only and not to scale. Measured in accordance to RICS standards.

# Particulars

## Property

Arkwright Road, Hampstead, London NW3  
£2,900

## Rooms



## Features

- Garden Apartment
- Modern
- Built In Wardrobes
- Integrated WiFi

## Information

Council Tax

### Energy efficiency rating for this property

This property's current energy rating is C. It has the potential to be C.

[See how to improve this property's energy performance.](#)



Oliver Kent

oliver.kent@vitaproperties.uk

+4477 7274 0351



Scan for our website





T: +4420 7759 2199  
E: [enquiries@vitaproperties.uk](mailto:enquiries@vitaproperties.uk)

Disclaimer: These particulars are prepared as a general guide for prospective purchasers or tenants and do not constitute, nor constitute part of, an offer or contract. All statements, descriptions, and measurements contained herein are given in good faith and are believed to be correct at the time of printing, but any intending purchaser or tenant should not rely on them as statements or representations of fact and must satisfy themselves by inspection or otherwise as to their correctness. Floor plans and photographs are for illustrative purposes only and may not be to scale. The position and size of doors, windows, appliances, and other features are approximate. Anti-Money Laundering (AML): In line with the Money Laundering, Terrorist Financing and Transfer of Funds Regulations 2017, we are required to carry out customer due diligence checks. Buyers/tenants will be asked to provide proof of identity, address, and source of funds before a sale or rental can be agreed. Data Protection (GDPR): Personal information supplied to Vita Properties will be processed in accordance with the General Data Protection Regulation (GDPR). Your details may be retained for legitimate business purposes relating to property services. Full details of our Privacy Policy are available on request.

All rights reserved.