



Crediton Hill

WEST HAMPSTEAD, LONDON NW6

£520



Located in one of West Hampstead's premier roads we are delighted to offer for rent a newly decorated one double bedroom garden flat set in a period property moments away from all the amenities and three stations of West Hampstead. Finchley Road and Hampstead are also easily accessible.

This superb flat benefits from a double bedroom with an en suite bathroom, fitted kitchen with appliances, guest WC, a reception which leads out onto a private patio garden.





Located in one of West Hampstead's premier roads we are delighted to offer for rent a newly decorated one double bedroom garden flat set in a period property moments away from all the amenities and three stations of West Hampstead. Finchley Road and Hampstead are also easily accessible.

This superb flat benefits from a double bedroom with an en suite bathroom, fitted kitchen with appliances, guest WC, a reception which leads out onto a private patio garden.

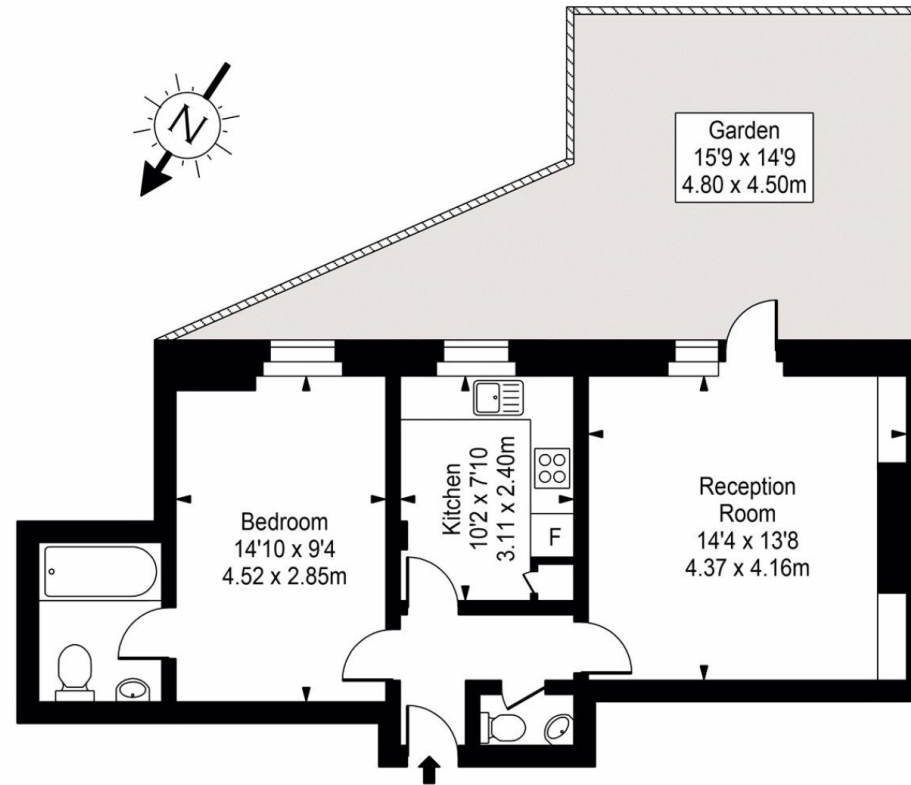








Crediton Hill



Ground Floor



Approx Gross Internal Area **535 Sq Ft - 49.70 Sq M**

For Illustration Purposes Only - Not To Scale
Floor plan by www.bestangle.co.uk

Particulars

Property

Crediton Hill, West Hampstead, London NW6
£520

Rooms

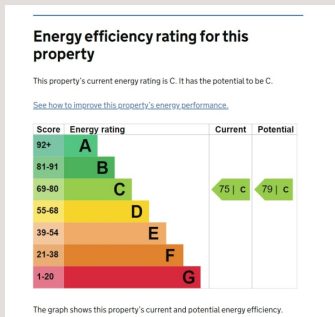


Features

- Private Patio Garden
- Spacious
- Separate Kitchen Breakfast Room
- Excellent Location

Information

Council Tax



Zoe Browne

zoe.browne@vitaproperties.uk

+44 7880 277371



Scan for our website





T: +4420 7759 2199

E: enquiries@vitaproperties.uk

Disclaimer: These particulars are prepared as a general guide for prospective purchasers or tenants and do not constitute, nor constitute part of, an offer or contract. All statements, descriptions, and measurements contained herein are given in good faith and are believed to be correct at the time of printing, but any intending purchaser or tenant should not rely on them as statements or representations of fact and must satisfy themselves by inspection or otherwise as to their correctness. Floor plans and photographs are for illustrative purposes only and may not be to scale. The position and size of doors, windows, appliances, and other features are approximate. Anti-Money Laundering (AML): In line with the Money Laundering, Terrorist Financing and Transfer of Funds Regulations 2017, we are required to carry out customer due diligence checks. Buyers/tenants will be asked to provide proof of identity, address, and source of funds before a sale or rental can be agreed. Data Protection (GDPR): Personal information supplied to Vita Properties will be processed in accordance with the General Data Protection Regulation (GDPR). Your details may be retained for legitimate business purposes relating to property services. Full details of our Privacy Policy are available on request.

All rights reserved.