



Shirland Road

MAIDA VALE, LONDON W9

£850,000



Delighted to offer this wonderful two bedroom garden apartment spanning approximately 1015 square feet, situated within a converted Victorian building with wooden flooring throughout.

With its own private entrance, the accommodation comprises a bright semi open plan kitchen and reception room, master bedroom with built in wardrobes and en-suite shower room, a further second bedroom and a spacious family bathroom.

The location between Elgin Avenue and Sutherland Avenue is ideal to take advantage of the local amenities. These include the canals of Little Venice, Paddington Recreation Ground and the shops/cafes of Formosa Street. The property benefits from excellent local pubs and restaurants including the Waterway and the Hero of Maida pub

The property is near Warwick Avenue underground (Bakerloo), with direct trains to Paddington and the West End. Royal Oak (Circle and Hammersmith and City) and Maida Vale (Bakerloo) are both a short walk. On street resident parking is available from Westminster City Council.





Delighted to offer this wonderful two bedroom garden apartment spanning approximately 1015 square feet, situated within a converted Victorian building with wooden flooring throughout.

With its own private entrance, the accommodation comprises a bright semi open plan kitchen and reception room, master bedroom with built in wardrobes and en-suite shower room, a further second bedroom and a spacious family bathroom.

The location between Elgin Avenue and Sutherland Avenue is ideal to take advantage of the local amenities. These include the canals of Little Venice, Paddington Recreation Ground and the shops/cafes of Formosa Street. The property benefits from excellent local pubs and restaurants including the Waterway and the Hero of Maida pub

The property is near Warwick Avenue underground (Bakerloo), with direct trains to Paddington and the West End. Royal Oak (Circle and Hammersmith and City) and Maida Vale (Bakerloo) are both a short walk. On street resident parking is available from Westminster City Council.









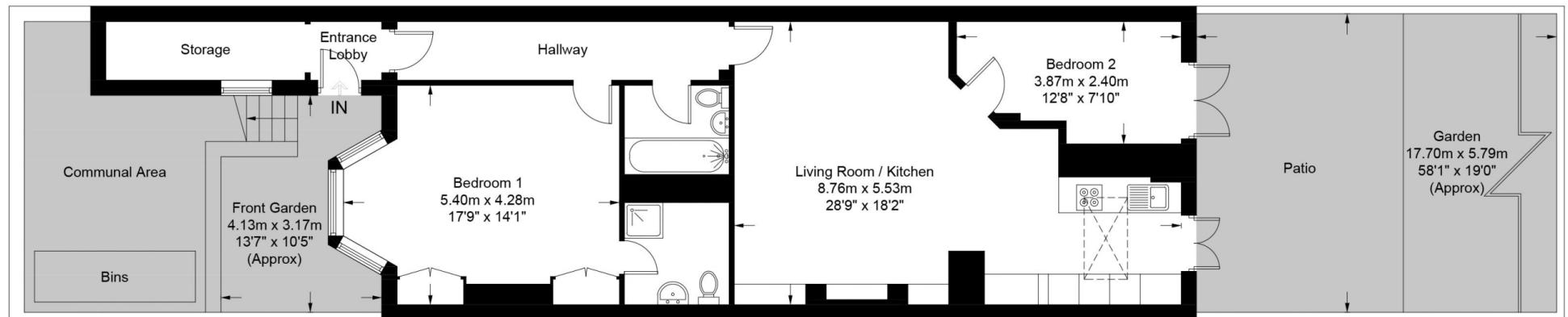
Scan for out video walkthrough





Shirland Road, W9

Approximate Gross Internal Area = 1015 sq ft / 94.3 sq m



**Certified
Property
Measurer**

This plan is for layout guidance only. Not drawn to scale unless stated. Windows and door openings are approximate. Whilst every care is taken in the preparation of this plan, please check all dimensions, shapes and compass bearings before making any decisions reliant upon them. (ID905399)

Particulars

Property

Shirland Road, Maida Vale, London W9
£850,000

Rooms

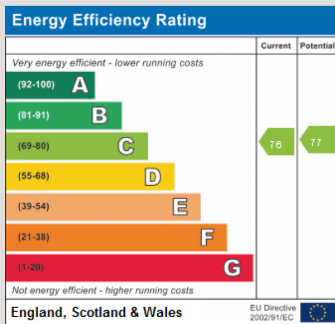


Features

- Private Garden
- Modern
- Wooden Floors
- Fully Tiled Bathroom

Information

Council Tax



Jonathan Singer

jonathan.singer@vitaproperties.uk
+4478 8428 6414



Scan for our website





T: +4420 7759 2199
E: enquiries@vitaproperties.uk

Disclaimer: These particulars are prepared as a general guide for prospective purchasers or tenants and do not constitute, nor constitute part of, an offer or contract. All statements, descriptions, and measurements contained herein are given in good faith and are believed to be correct at the time of printing, but any intending purchaser or tenant should not rely on them as statements or representations of fact and must satisfy themselves by inspection or otherwise as to their correctness. Floor plans and photographs are for illustrative purposes only and may not be to scale. The position and size of doors, windows, appliances, and other features are approximate. Anti-Money Laundering (AML): In line with the Money Laundering, Terrorist Financing and Transfer of Funds Regulations 2017, we are required to carry out customer due diligence checks. Buyers/tenants will be asked to provide proof of identity, address, and source of funds before a sale or rental can be agreed. Data Protection (GDPR): Personal information supplied to Vita Properties will be processed in accordance with the General Data Protection Regulation (GDPR). Your details may be retained for legitimate business purposes relating to property services. Full details of our Privacy Policy are available on request.

All rights reserved.