



Abbey Road

SOUTH HAMPSTEAD, LONDON NW6

£1,000,000



This stylish three double bedroom property in this extremely impressive Victorian conversion with direct access to a private garden situated within an imposing corner building.

The interior of property has been designed to have a contemporary feel throughout with wood flooring, bright bay windows, high ceilings and all original fire places.

Separate modern kitchen with granite worktops and all modern appliances, two luxurious bathroom with underfloor heating. Beautifully located on the sought after, Abbey Road which is moments from Finchley Road tube station and St Johns Wood.



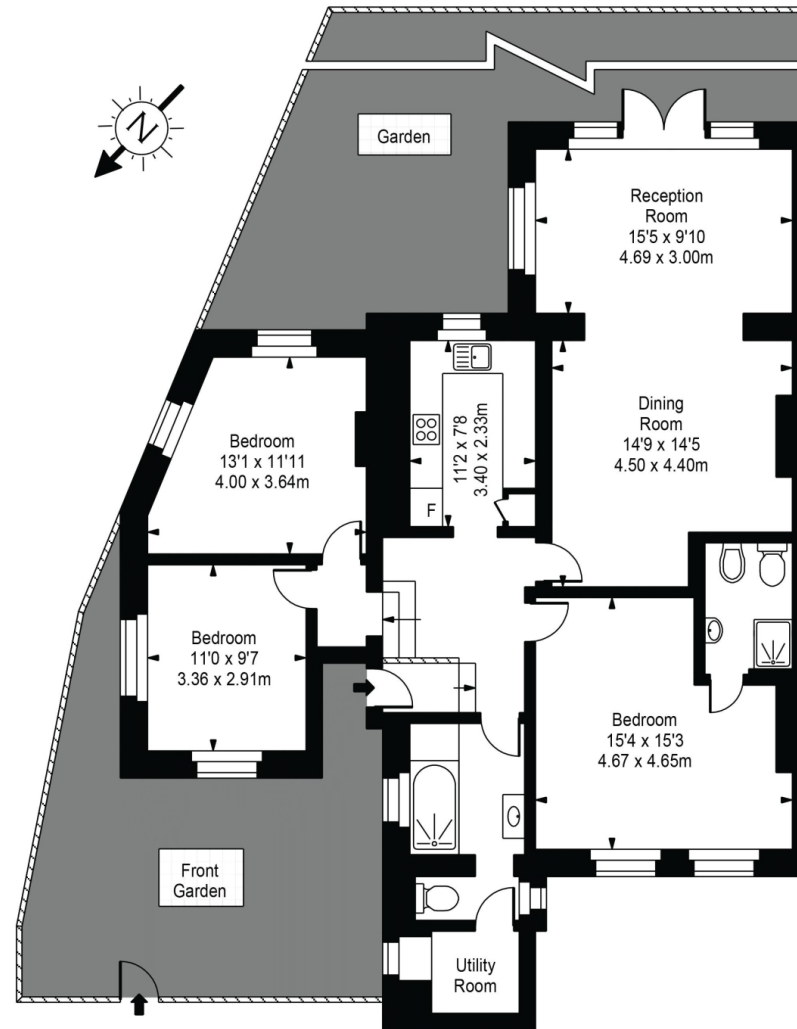








Abbey Road



Approx Gross Internal Area 1255 Sq Ft - 116.59 Sq M

For Illustration Purposes Only - Not To Scale  
Floor plan by [www.bestangle.co.uk](http://www.bestangle.co.uk)

# Particulars

## Property

Abbey Road, South Hampstead, London NW6  
£1,000,000

## Rooms



1



2



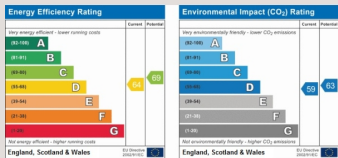
3

## Features

- Private Garden
- Interior Designed
- Own Entrance
- 3 Double Bedrooms

## Information

Council Tax



Jonathan Singer

jonathan.singer@vitaproperties.uk  
+4478 8428 6414



Scan for our website





T: +4420 7759 2199

E: [enquiries@vitaproperties.uk](mailto:enquiries@vitaproperties.uk)

Disclaimer: These particulars are prepared as a general guide for prospective purchasers or tenants and do not constitute, nor constitute part of, an offer or contract. All statements, descriptions, and measurements contained herein are given in good faith and are believed to be correct at the time of printing, but any intending purchaser or tenant should not rely on them as statements or representations of fact and must satisfy themselves by inspection or otherwise as to their correctness. Floor plans and photographs are for illustrative purposes only and may not be to scale. The position and size of doors, windows, appliances, and other features are approximate. Anti-Money Laundering (AML): In line with the Money Laundering, Terrorist Financing and Transfer of Funds Regulations 2017, we are required to carry out customer due diligence checks. Buyers/tenants will be asked to provide proof of identity, address, and source of funds before a sale or rental can be agreed. Data Protection (GDPR): Personal information supplied to Vita Properties will be processed in accordance with the General Data Protection Regulation (GDPR). Your details may be retained for legitimate business purposes relating to property services. Full details of our Privacy Policy are available on request.

All rights reserved.