



Blenheim Crescent
NOTTING HILL, LONDON W11

£600



An exquisite, completely renovated one-bedroom residence nestled in the vibrant heart of Notting Hill.

Meticulously crafted with top-tier interior design, this residence is primed for immediate occupancy. Brimming with natural light, it serves as an ideal abode for a single dweller seeking a harmonious living space.

This impeccably refurbished apartment is available for Immediate Occupation







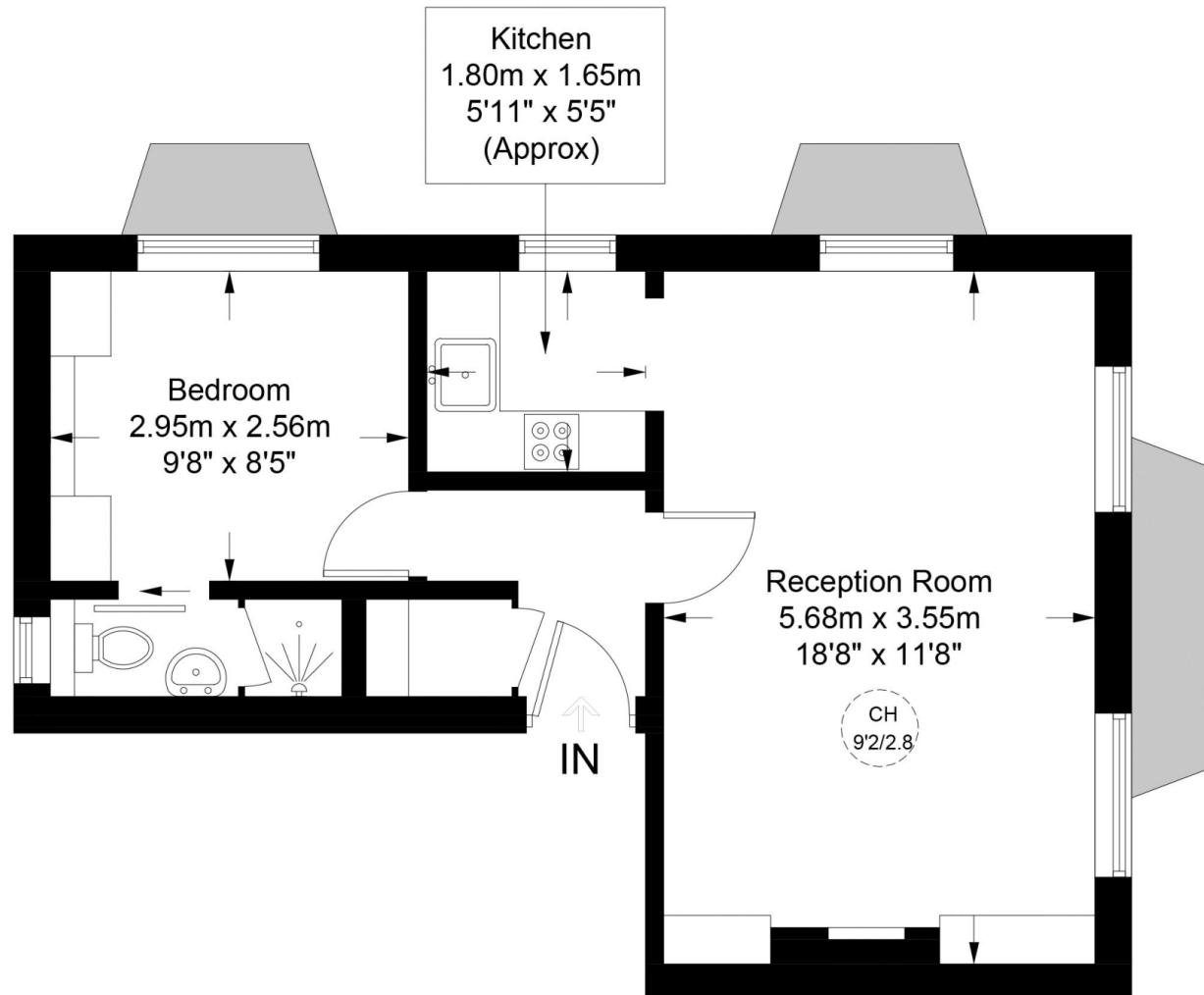






Blenheim Crescent, W11

Approximate Gross Internal Area = 409 sq ft / 38.0 sq m



Second Floor



**Certified
Property
Measurer**

This plan is for layout guidance only. Not drawn to scale unless stated. Windows and door openings are approximate. Whilst every care is taken in the preparation of this plan, please check all dimensions, shapes and compass bearings before making any decisions reliant upon them. (ID881321)

Particulars

Property

Blenheim Crescent, Notting Hill, London W11
£600

Rooms

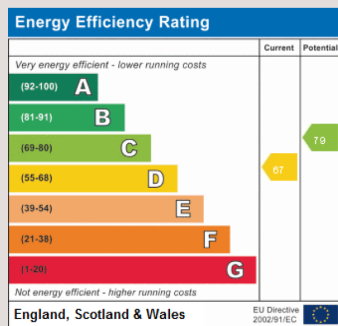


Features

- Newly Refurbished
- One Bedroom
- Close to Ladbroke Grove Station
- Furnished

Information

Council Tax



Zoe Browne

zoe.browne@vitaproperties.uk
+44 7880 277371



Scan for our website





T: +4420 7759 2199

E: enquiries@vitaproperties.uk

Disclaimer: These particulars are prepared as a general guide for prospective purchasers or tenants and do not constitute, nor constitute part of, an offer or contract. All statements, descriptions, and measurements contained herein are given in good faith and are believed to be correct at the time of printing, but any intending purchaser or tenant should not rely on them as statements or representations of fact and must satisfy themselves by inspection or otherwise as to their correctness. Floor plans and photographs are for illustrative purposes only and may not be to scale. The position and size of doors, windows, appliances, and other features are approximate. Anti-Money Laundering (AML): In line with the Money Laundering, Terrorist Financing and Transfer of Funds Regulations 2017, we are required to carry out customer due diligence checks. Buyers/tenants will be asked to provide proof of identity, address, and source of funds before a sale or rental can be agreed. Data Protection (GDPR): Personal information supplied to Vita Properties will be processed in accordance with the General Data Protection Regulation (GDPR). Your details may be retained for legitimate business purposes relating to property services. Full details of our Privacy Policy are available on request.

All rights reserved.