



Northway

HAMPSTEAD GARDEN SUBURB, LONDON NW11

£2,150,000



Located on this lovely tree-lined street in the heart of Hampstead Garden Suburb, within walking distance to the open spaces of Bigwood and the shops and cafes of Marketplace, a charming three storey, four/five bedroom detached house, set back and up from the road on a prominent position.

In the same ownership for nearly 40 years, this charming house benefits from off street parking for two cars plus an integral single garage as well as a beautifully maintained rear garden.

The accommodation comprises a 31^{WRITE TO US} double reception room with conservatory leading onto a beautiful 56^{WRITE TO US} garden, fully fitted kitchen, lounge with direct access to the garden, guest w/c, four/five bedrooms and two bathrooms.

The house could perhaps be extended but this would be strictly subject to both local authority and Hampstead Garden Suburb Trust consent.



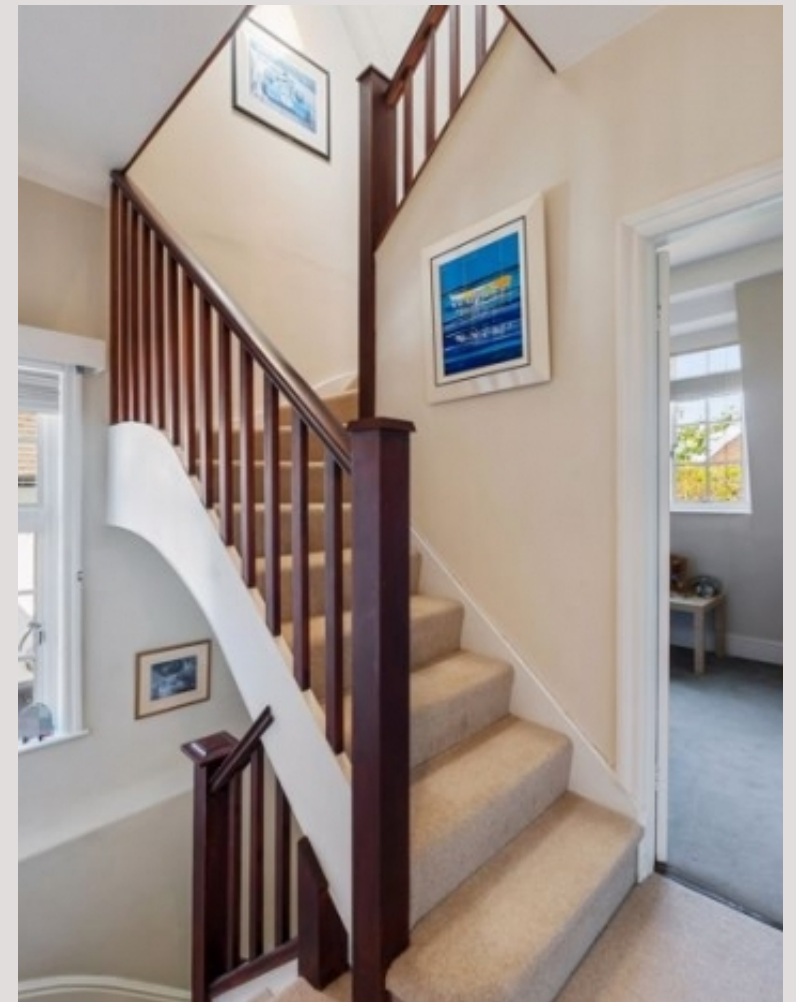








Scan for out video walkthrough



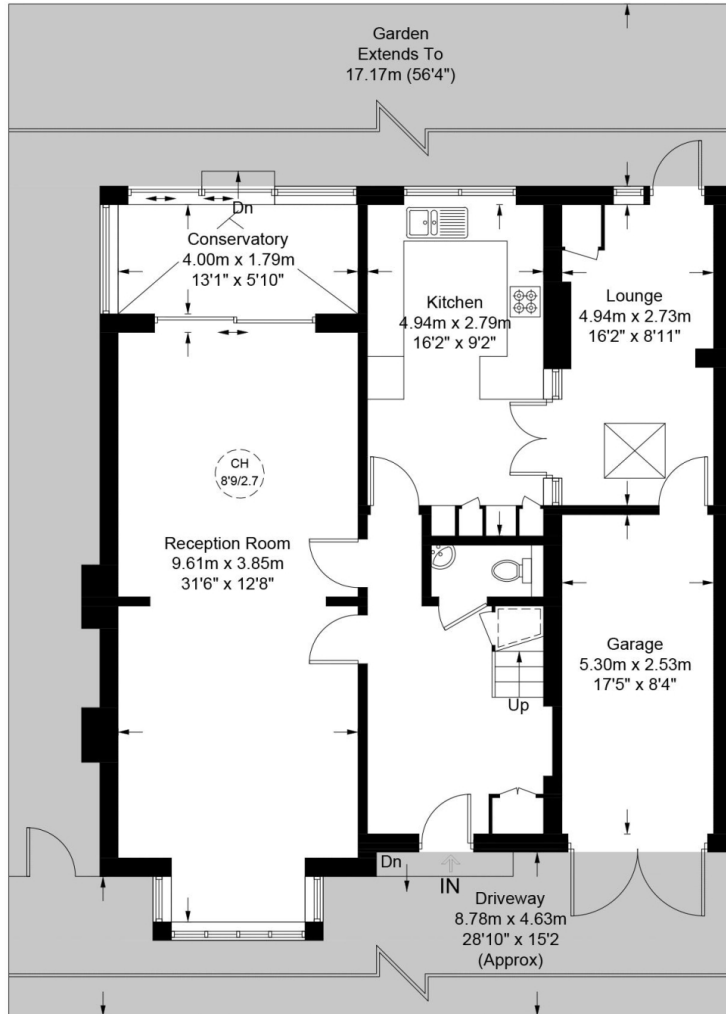


Northway, NW11

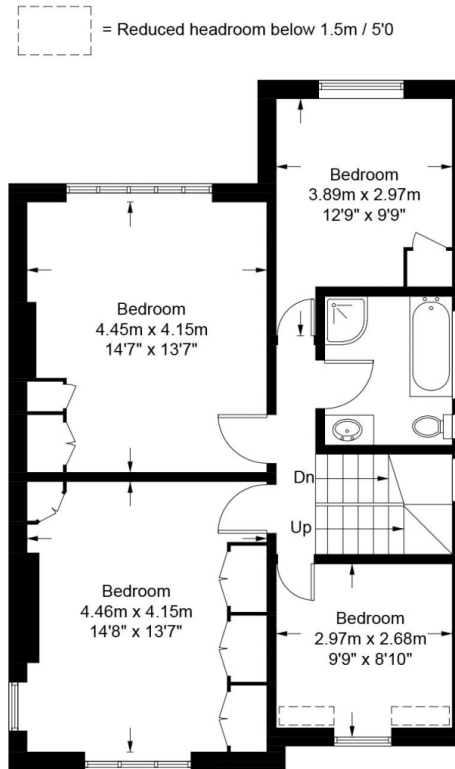
Approximate Gross Internal Area = 2160 sq ft / 200.7 sq m
(Excluding Reduced Headroom / Including Garage)

Reduced Headroom = 194 sq ft / 18.0 sq m

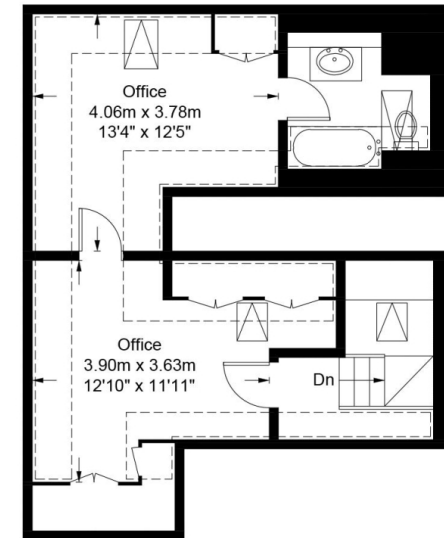
Total = 2354 sq ft / 218.7 sq m



Ground Floor



First Floor



Second Floor

= Reduced headroom below 1.5m / 5'0"



Certified
Property
Measurer

This plan is for layout guidance only. Not drawn to scale unless stated. Windows and door openings are approximate. Whilst every care is taken in the preparation of this plan, please check all dimensions, shapes and compass bearings before making any decisions reliant upon them. (ID878544)

Particulars

Property

Northway, Hampstead Garden Suburb, London NW11
£2,150,000

Rooms

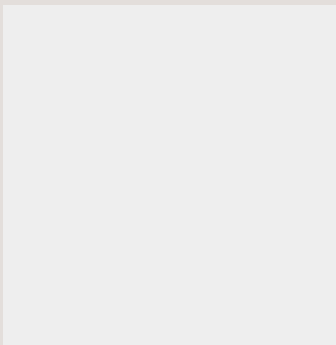
-  3
-  2
-  5+

Features

- Detached
- Four Large Bedrooms
- Double volume Reception
- Moments to Shops of Market Place

Information

Council Tax



Oliver Kent

oliver.kent@vitaproperties.uk
+4477 7274 0351



Scan for our website





T: +4420 7759 2199

E: enquiries@vitaproperties.uk

Disclaimer: These particulars are prepared as a general guide for prospective purchasers or tenants and do not constitute, nor constitute part of, an offer or contract. All statements, descriptions, and measurements contained herein are given in good faith and are believed to be correct at the time of printing, but any intending purchaser or tenant should not rely on them as statements or representations of fact and must satisfy themselves by inspection or otherwise as to their correctness. Floor plans and photographs are for illustrative purposes only and may not be to scale. The position and size of doors, windows, appliances, and other features are approximate. Anti-Money Laundering (AML): In line with the Money Laundering, Terrorist Financing and Transfer of Funds Regulations 2017, we are required to carry out customer due diligence checks. Buyers/tenants will be asked to provide proof of identity, address, and source of funds before a sale or rental can be agreed. Data Protection (GDPR): Personal information supplied to Vita Properties will be processed in accordance with the General Data Protection Regulation (GDPR). Your details may be retained for legitimate business purposes relating to property services. Full details of our Privacy Policy are available on request.

All rights reserved.