



Compayne Gardens  
SOUTH HAMPSTEAD, LONDON, NW6

£1,085



Available 04 August 2022 is this fabulous (approx 2110 sq ft) three double bedroom split level flat arranged over the top two floors of a period conversion in the heart of South Hampstead and withing minutes of the transport links at Finchley Road and also in striking distance of West Hampstead's cafes and restaurants.

The property offers bright generous spaces, wooden floors and neutral decor along with a modern fitted kitchen with the expected appliances of such a well finished property.

All bedrooms have en suite facilities, built in wardrobes and a South facing sheltered balcony.

Offered unfurnished.



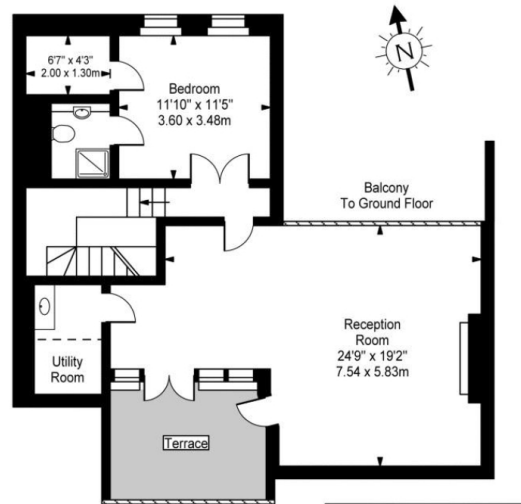




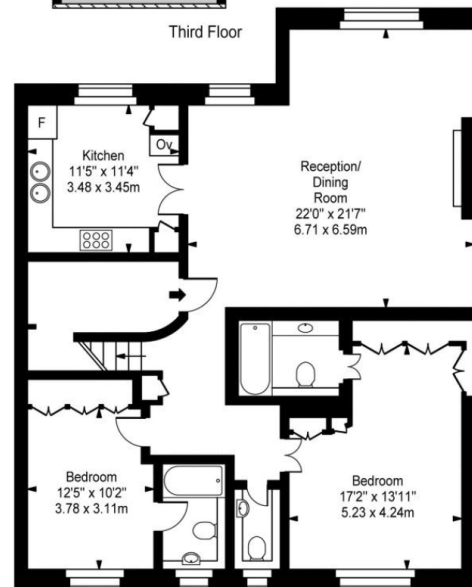




# Companyne Gardens



Third Floor



Second Floor



Approx Gross Internal Area **2131 Sq Ft - 198 Sq M**

For Illustration Purposes Only - Not To Scale  
Floor plan by [www.creativeplanetik.com](http://www.creativeplanetik.com)

# Particulars

## Property

Compayne Gardens, South Hampstead, London, NW6  
£1,085

## Rooms



2



3



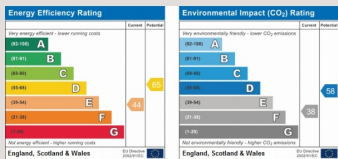
3

## Features

- A fabulous (approx 2110 sq ft) apartment
- Wooden floors
- 2 receptions
- 3 en suite bathrooms as well as a guest WC

## Information

Council Tax

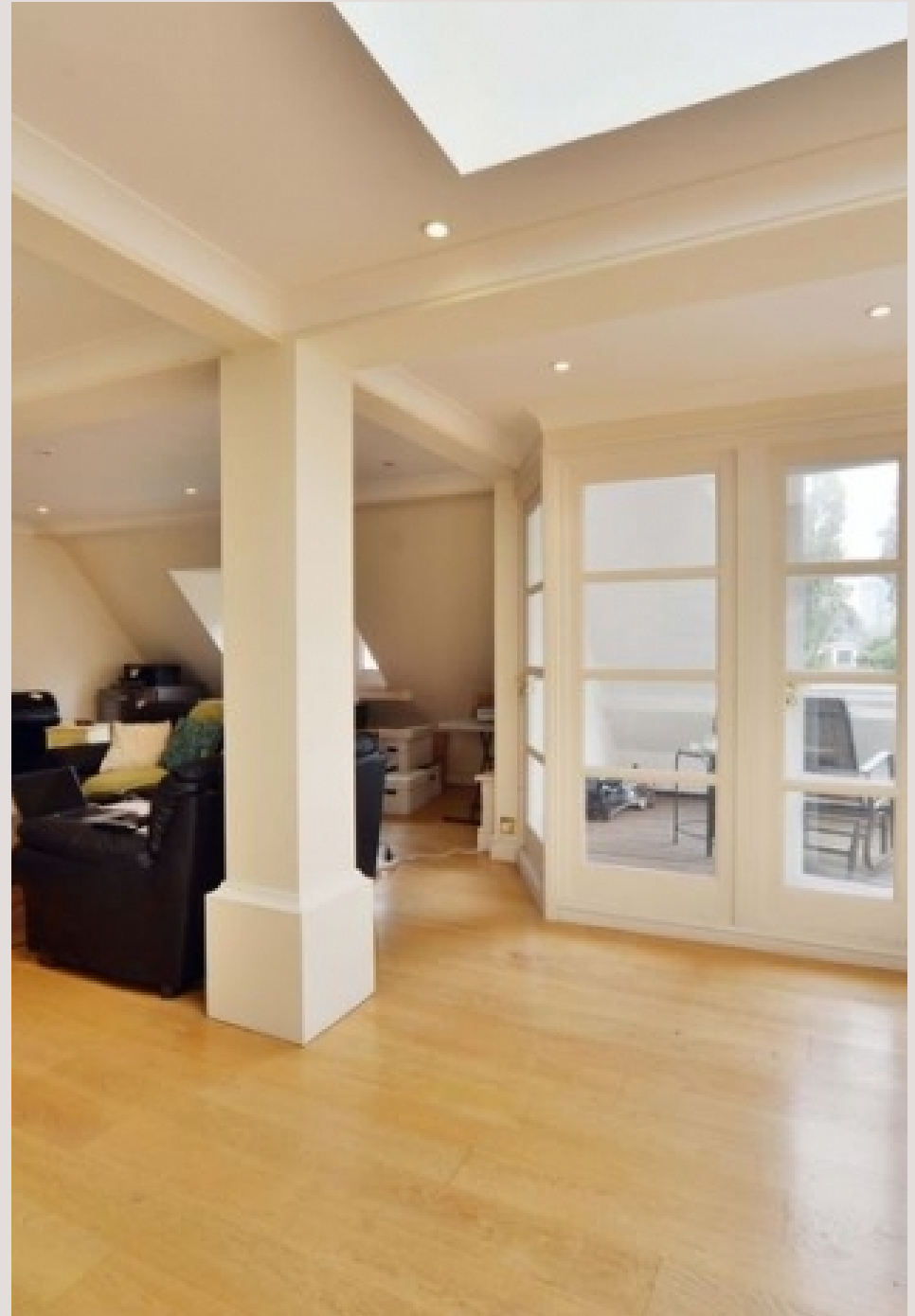


Oliver Kent

oliver.kent@vitaproperties.uk  
+4477 7274 0351



Scan for our website





T: +4420 7759 2199  
E: [enquiries@vitaproperties.uk](mailto:enquiries@vitaproperties.uk)

Disclaimer: These particulars are prepared as a general guide for prospective purchasers or tenants and do not constitute, nor constitute part of, an offer or contract. All statements, descriptions, and measurements contained herein are given in good faith and are believed to be correct at the time of printing, but any intending purchaser or tenant should not rely on them as statements or representations of fact and must satisfy themselves by inspection or otherwise as to their correctness. Floor plans and photographs are for illustrative purposes only and may not be to scale. The position and size of doors, windows, appliances, and other features are approximate. Anti-Money Laundering (AML): In line with the Money Laundering, Terrorist Financing and Transfer of Funds Regulations 2017, we are required to carry out customer due diligence checks. Buyers/tenants will be asked to provide proof of identity, address, and source of funds before a sale or rental can be agreed. Data Protection (GDPR): Personal information supplied to Vita Properties will be processed in accordance with the General Data Protection Regulation (GDPR). Your details may be retained for legitimate business purposes relating to property services. Full details of our Privacy Policy are available on request.

All rights reserved.