



Loudoun Road
ST JOHNS WOOD, LONDON NW8
£500



Available 27th July 2022 - As main agents we are delighted to offer this contemporary apartment set on the Ground floor within a fabulous church conversion.

This exceptional property comprises fully fitted kitchen with Corrian worktops, open plan to a bright spacious reception, one double bedroom, fitted wardrobes, luxury modern bathroom.

The property further benefits from a communal roof terrace, underfloor heating, smoked oak wood flooring throughout.

This stunning flat is conveniently located moments from South Hampstead and Swiss Cottage shopping and transport links.





Available 27th July 2022 - As main agents we are delighted to offer this contemporary apartment set on the Ground floor within a fabulous church conversion.

This exceptional property comprises fully fitted kitchen with Corrian worktops, open plan to a bright spacious reception, one double bedroom, fitted wardrobes, luxury modern bathroom.

The property further benefits from a communal roof terrace, underfloor heating, smoked oak wood flooring throughout.

This stunning flat is conveniently located moments from South Hampstead and Swiss Cottage shopping and transport links.

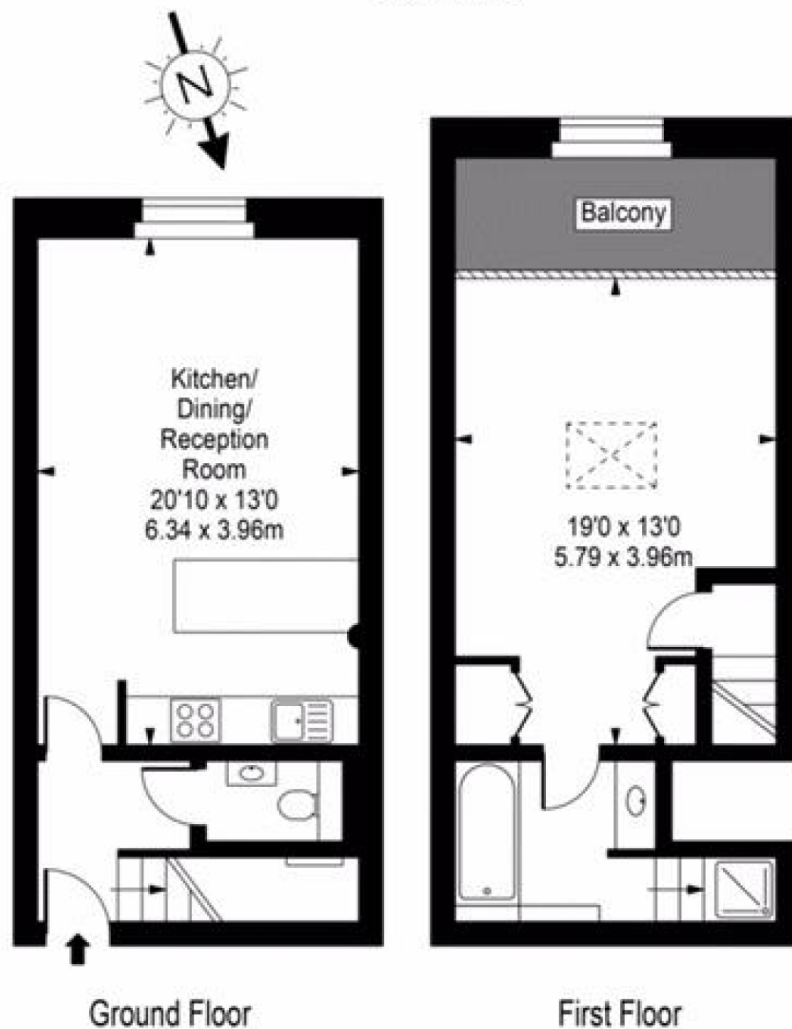








All Souls



Approx Gross Internal Area **752 Sq Ft - 69.90 Sq M**

For Illustration Purposes Only - Not To Scale
Floor plan by www.creativeplanetlk.com

Particulars

Property

Loudoun Road, St Johns Wood, London NW8
£500

Rooms

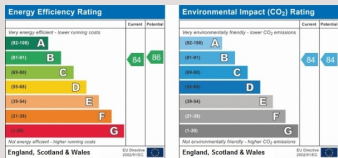


Features

- Church Conversion
- Ultra Modern
- Moments to South Hampstead and Swiss Cottage transport links
- Managed

Information

Council Tax



Oliver Kent

oliver.kent@vitaproperties.uk
+4477 7274 0351



Scan for our website





T: +4420 7759 2199

E: enquiries@vitaproperties.uk

Disclaimer: These particulars are prepared as a general guide for prospective purchasers or tenants and do not constitute, nor constitute part of, an offer or contract. All statements, descriptions, and measurements contained herein are given in good faith and are believed to be correct at the time of printing, but any intending purchaser or tenant should not rely on them as statements or representations of fact and must satisfy themselves by inspection or otherwise as to their correctness. Floor plans and photographs are for illustrative purposes only and may not be to scale. The position and size of doors, windows, appliances, and other features are approximate. Anti-Money Laundering (AML): In line with the Money Laundering, Terrorist Financing and Transfer of Funds Regulations 2017, we are required to carry out customer due diligence checks. Buyers/tenants will be asked to provide proof of identity, address, and source of funds before a sale or rental can be agreed. Data Protection (GDPR): Personal information supplied to Vita Properties will be processed in accordance with the General Data Protection Regulation (GDPR). Your details may be retained for legitimate business purposes relating to property services. Full details of our Privacy Policy are available on request.

All rights reserved.