



Priory Road

SOUTH HAMPSTEAD, LONDON NW6

£1,100,000



We are delighted to offer this three double bedroom second floor lateral apartment with a large private west facing balcony, situated within an impressive period house on a quiet and desirable South Hampstead street.

This excellent property is presented in immaculate condition throughout and is arranged to provide exceptional entertaining space.

The accommodation comprises a superb reception room with a large west facing balcony, separate kitchen/breakfast room, principal bedroom with en-suite shower room, two further double bedrooms and a family bathroom.

The property further benefits from access to a landscaped communal garden, first come first serve gated off street parking and a separate storage room found in the basement.





Priory Road is conveniently located for the local shops, restaurants and amenities of West Hampstead and Finchley Road, whilst a combination of Jubilee, Metropolitan, Overground and Thameslink transport links can be found nearby at West Hampstead (0.3m), Finchley Road (0.5m), South Hampstead (0.6m) and Swiss Cottage (0.8m) stations









Scan for out video walkthrough

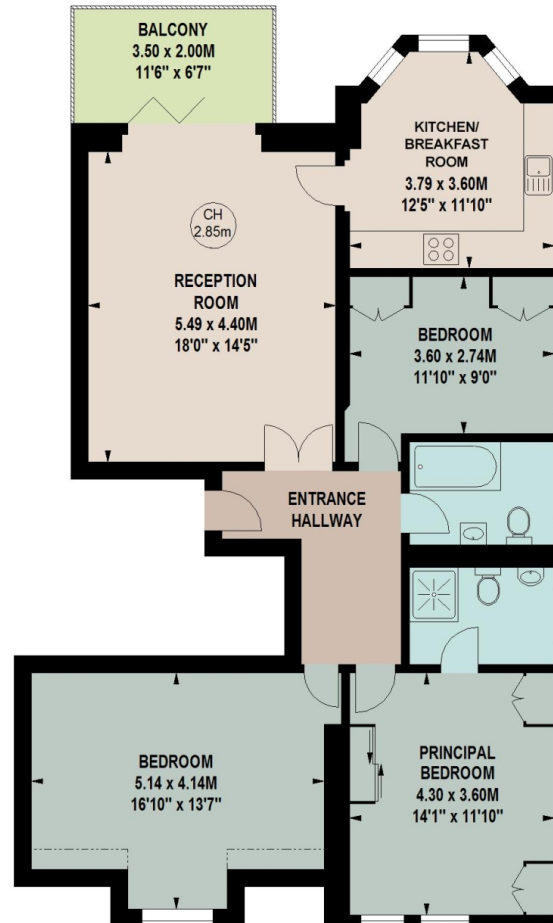
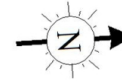


Priory Road, South Hampstead NW6

Approximate gross internal area

104 sq m /1122 sq ft

Key:
CH - Ceiling Height



Second Floor

The floor plan is not to scale and measurements and areas shown are approximate and therefore should be used for illustrative purposes only. The plan has been prepared in accordance with the RICS code of Measuring Practice and whilst we have confidence in the information produced, it must not be relied on.

If there is any aspect of particular importance, you should carry out or commission your own inspection of the property.

Copyright of Stu J Beesley.

Particulars

Property

Priory Road, South Hampstead, London NW6
£1,100,000

Rooms



1



2



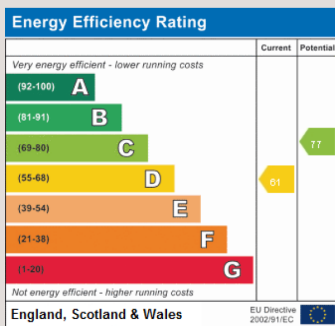
3

Features

- Balcony
- Turnkey
- Chain Free
- Share of Freehold

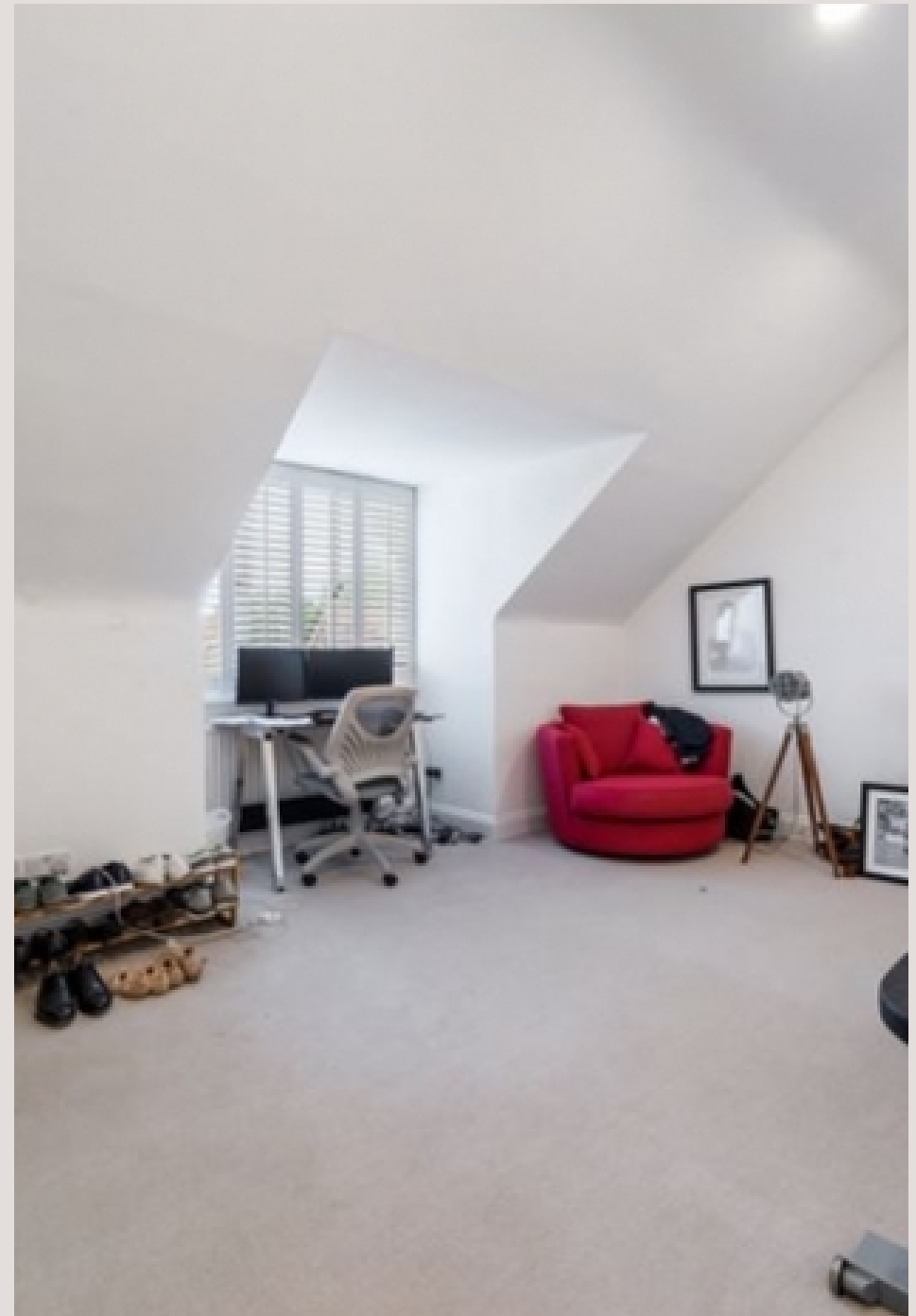
Information

Council Tax



Oliver Kent

oliver.kent@vitaproperties.uk
+4477 7274 0351



Scan for our website





T: +4420 7759 2199

E: enquiries@vitaproperties.uk

Disclaimer: These particulars are prepared as a general guide for prospective purchasers or tenants and do not constitute, nor constitute part of, an offer or contract. All statements, descriptions, and measurements contained herein are given in good faith and are believed to be correct at the time of printing, but any intending purchaser or tenant should not rely on them as statements or representations of fact and must satisfy themselves by inspection or otherwise as to their correctness. Floor plans and photographs are for illustrative purposes only and may not be to scale. The position and size of doors, windows, appliances, and other features are approximate. Anti-Money Laundering (AML): In line with the Money Laundering, Terrorist Financing and Transfer of Funds Regulations 2017, we are required to carry out customer due diligence checks. Buyers/tenants will be asked to provide proof of identity, address, and source of funds before a sale or rental can be agreed. Data Protection (GDPR): Personal information supplied to Vita Properties will be processed in accordance with the General Data Protection Regulation (GDPR). Your details may be retained for legitimate business purposes relating to property services. Full details of our Privacy Policy are available on request.

All rights reserved.