



## Garden Court

GARDEN ROAD, ST JOHNS WOOD, LONDON, NW8

£1,200



Offered Unfurnished - Presenting a bright and spacious, three double bed apartment with incredible outside space in the heart of St Johns Wood.

This modern apartment comprises of a contemporary, open-plan kitchen and reception with fully integrated appliances, sleek, marble-effect worksurfaces, breakfast bar and lots of natural light. All three bedrooms are large doubles with two offering en-suite shower rooms, in addition to a full, family bathroom. Finally, the crowning glory of this beautiful apartment has to be the enormous private terrace with sweeping, un-disturbed views across London. Further features include hardwood flooring to common areas, stone effect floors to kitchen and soft, plush carpeting to bedrooms. Residents in Garden Court also benefit from access to well-manicured communal gardens.

Set on the fifth floor (with lift access) in an attractive purpose-built block on the iconic 'Abbey Road', and surrounded by an abundance of restaurants, cafe's and other amenities of St Johns Wood High Street, as well as boasting excellent transport links from St Johns Wood Station (Jubilee Line) and Maida Vale (Bakerloo Line).









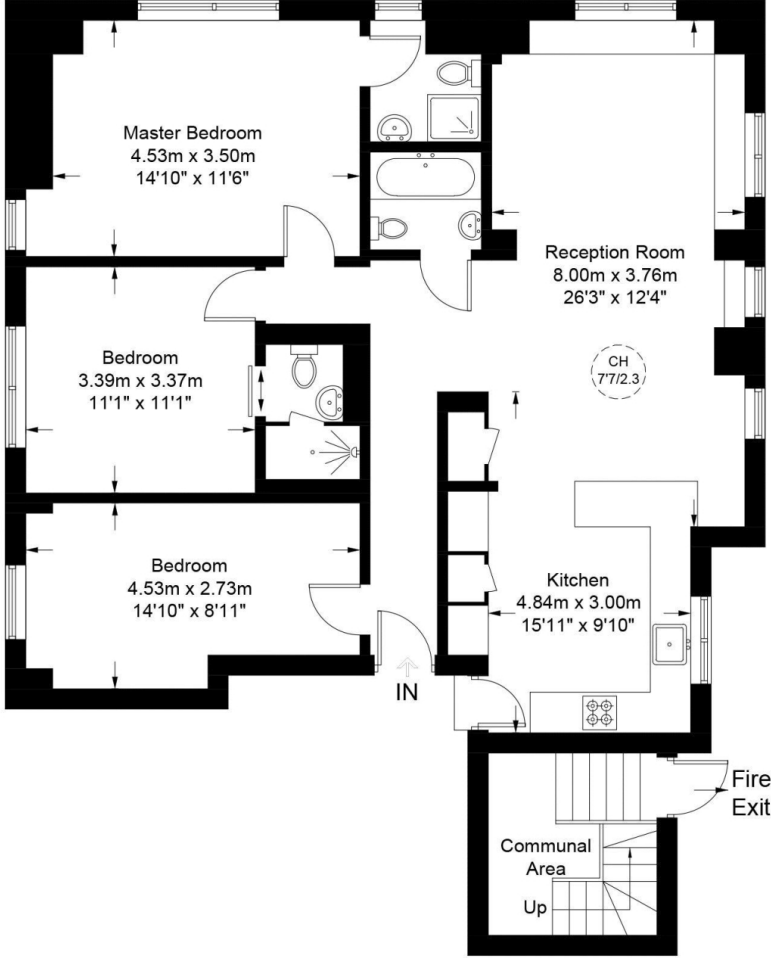


Scan for out video walkthrough

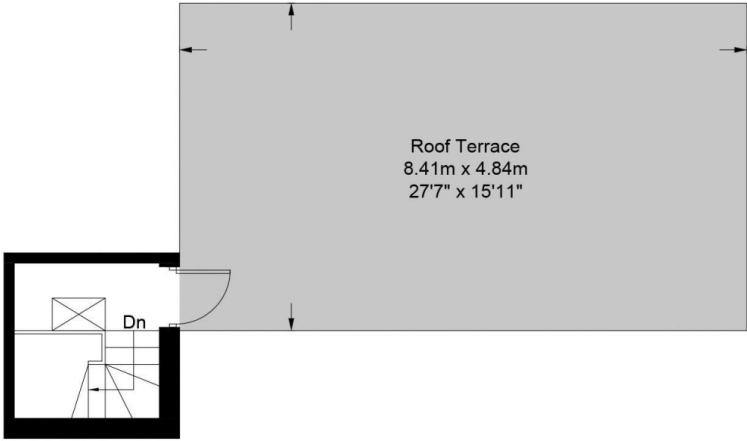


# Garden Court, NW8

Approximate Gross Internal Area = 1191 sq ft / 110.64 sq m  
Communal Area = 129 sq ft / 12 sq m



**Fifth Floor**



**Sixth Floor**

This plan is for layout guidance only. Not drawn to scale unless stated. Windows and door openings are approximate. Whilst every care is taken in the preparation of this plan, please check all dimensions, shapes and compass bearings before making any decisions reliant upon them. (ID810050)

# Particulars

## Property

Garden Court, Garden Road, St Johns Wood, London, NW8  
£1,200

## Rooms

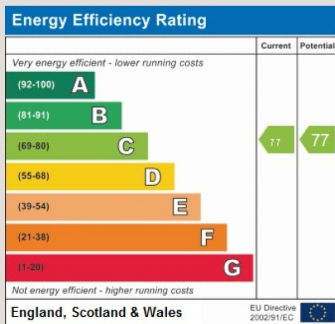


## Features

- 3 Bedroom Penthouse
- Close to Transport Links and St Johns Wood High Street
- Moments from Maida Vale and Little Venice
- 27ft Private Roof Terrace

## Information

Council Tax



Oliver Kent

[oliver.kent@vitaproperties.uk](mailto:oliver.kent@vitaproperties.uk)  
+4477 7274 0351



Scan for our website





T: +4420 7759 2199  
E: [enquiries@vitaproperties.uk](mailto:enquiries@vitaproperties.uk)

Disclaimer: These particulars are prepared as a general guide for prospective purchasers or tenants and do not constitute, nor constitute part of, an offer or contract. All statements, descriptions, and measurements contained herein are given in good faith and are believed to be correct at the time of printing, but any intending purchaser or tenant should not rely on them as statements or representations of fact and must satisfy themselves by inspection or otherwise as to their correctness. Floor plans and photographs are for illustrative purposes only and may not be to scale. The position and size of doors, windows, appliances, and other features are approximate. Anti-Money Laundering (AML): In line with the Money Laundering, Terrorist Financing and Transfer of Funds Regulations 2017, we are required to carry out customer due diligence checks. Buyers/tenants will be asked to provide proof of identity, address, and source of funds before a sale or rental can be agreed. Data Protection (GDPR): Personal information supplied to Vita Properties will be processed in accordance with the General Data Protection Regulation (GDPR). Your details may be retained for legitimate business purposes relating to property services. Full details of our Privacy Policy are available on request.

All rights reserved.