



Pulse Apartments

LYMINGTON ROAD, HAMPSTEAD, LONDON NW6

£1,350,000



We are delighted to offer as sole agents this luxury three bedroom apartment boasting approx.

1150 sq ft located on the 4th floor within a sought after modern development.

This flat has been renovated and fully modernised and benefits three lovely size bedrooms, fitted wardrobe to two the rooms, two luxury Porcalonosa bathrooms (1 ensuite) and a Baulthap kitchen.

The flat benefits from a very spacious lounge surrounded by large windows with a private balcony big enough to entertain, space.

Further benefits include under floor heating, an allocated underground parking space and a porter.

West Hampstead, Finchley Road and Hampstead are only a minute's walk (Jubilee and Metropolitan Lines) as well as the O2 Centre.



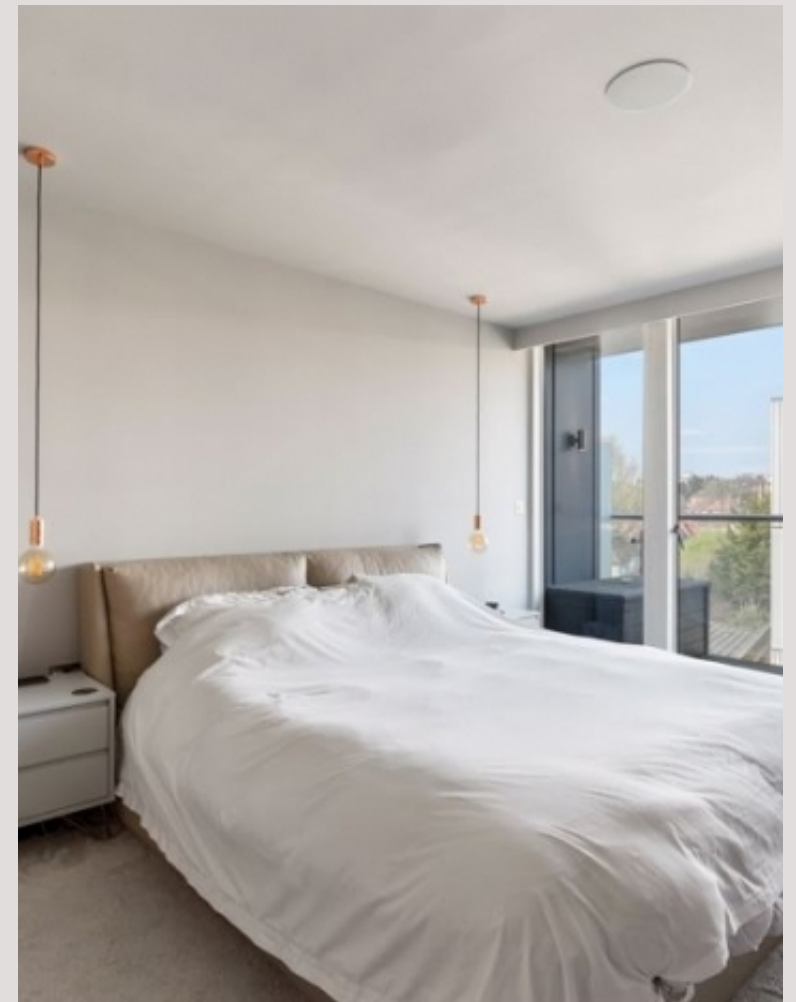








Scan for out video walkthrough



Pulse Apartments, NW6

Approximate Gross Internal Area = 1150 sq ft / 106.8 sq m



Fourth Floor



**Certified
Property
Measurer**

This plan is for layout guidance only. Not drawn to scale unless stated. Windows and door openings are approximate. Whilst every care is taken in the preparation of this plan, please check all dimensions, shapes and compass bearings before making any decisions reliant upon them. (ID845361)

Particulars

Property

Pulse Apartments, Lymington Road, Hampstead, London
~~£1,350,000~~

Rooms



1



2



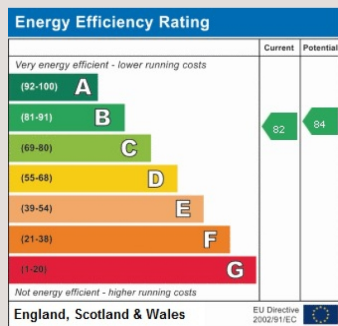
3

Features

- All bedrooms offer access to the terrace
- Baulthap kitchen with a Quooker hot tap
- Rako lighting control and electric blinds (can be controlled from smart phone)
- Sonos built in sound system in every room

Information

Council Tax

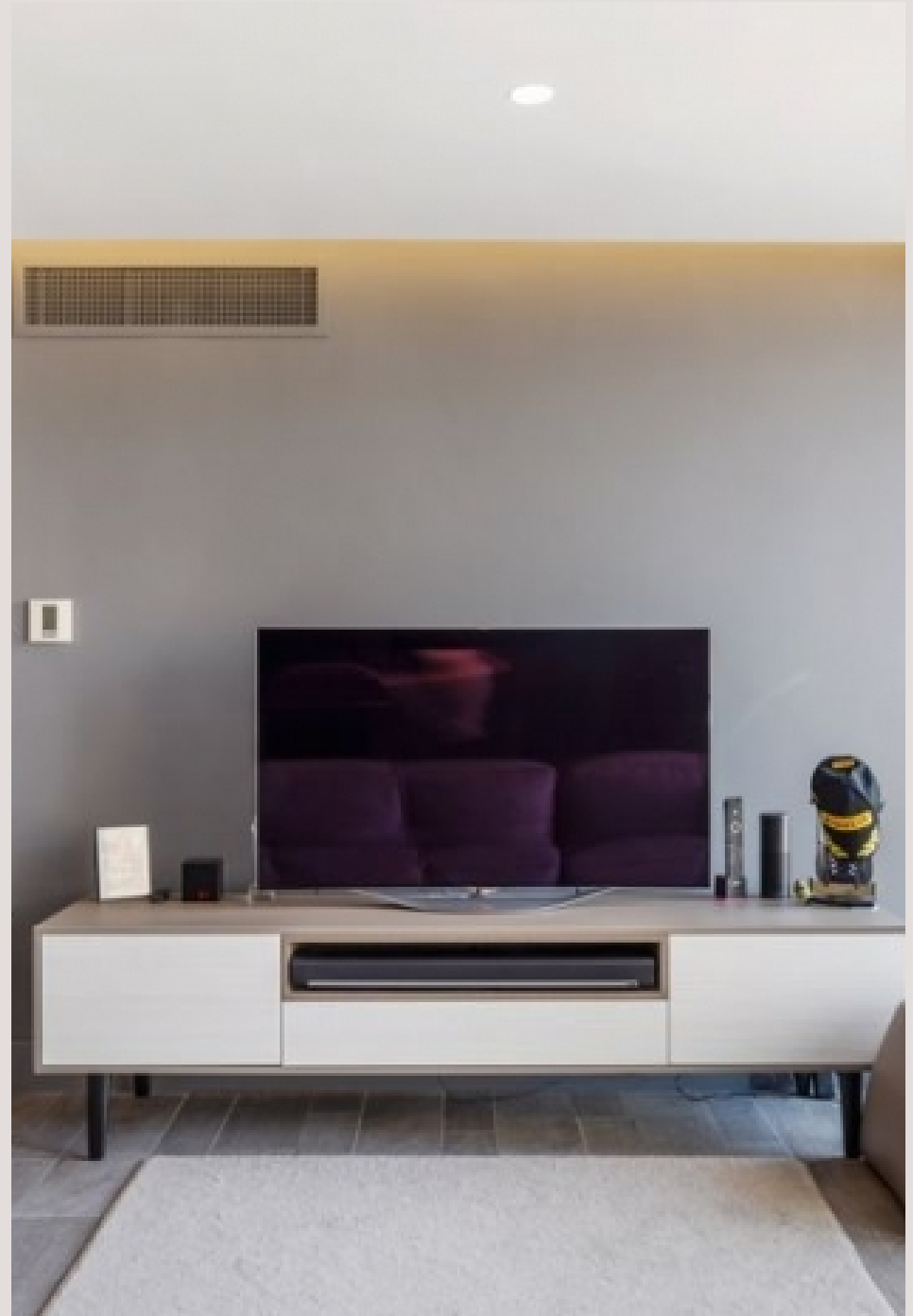


Oliver Kent

oliver.kent@vitaproperties.uk
+4477 7274 0351



Scan for our website





T: +4420 7759 2199
E: enquiries@vitaproperties.uk

Disclaimer: These particulars are prepared as a general guide for prospective purchasers or tenants and do not constitute, nor constitute part of, an offer or contract. All statements, descriptions, and measurements contained herein are given in good faith and are believed to be correct at the time of printing, but any intending purchaser or tenant should not rely on them as statements or representations of fact and must satisfy themselves by inspection or otherwise as to their correctness. Floor plans and photographs are for illustrative purposes only and may not be to scale. The position and size of doors, windows, appliances, and other features are approximate. Anti-Money Laundering (AML): In line with the Money Laundering, Terrorist Financing and Transfer of Funds Regulations 2017, we are required to carry out customer due diligence checks. Buyers/tenants will be asked to provide proof of identity, address, and source of funds before a sale or rental can be agreed. Data Protection (GDPR): Personal information supplied to Vita Properties will be processed in accordance with the General Data Protection Regulation (GDPR). Your details may be retained for legitimate business purposes relating to property services. Full details of our Privacy Policy are available on request.

All rights reserved.