



Lyndhurst Lodge
HAMPSTEAD, LONDON, NW3

£2,500



Available 8th April - A spacious three double bedroom, three bathroom apartment with terrace situated on the first floor of this grand period property and offering a delightful double reception room open to a fully fitted eat-in kitchen. This apartment benefits from many period features with high ceilings, feature fireplace, excellent built in storage throughout and plus use of communal garden and lift.

This property is ideally located on Lyndhurst Road, convenient for all the amenities of both Belsize Park and Hampstead Village and local transport facilities (Northern Line Tube & Jubilee Line Tube).



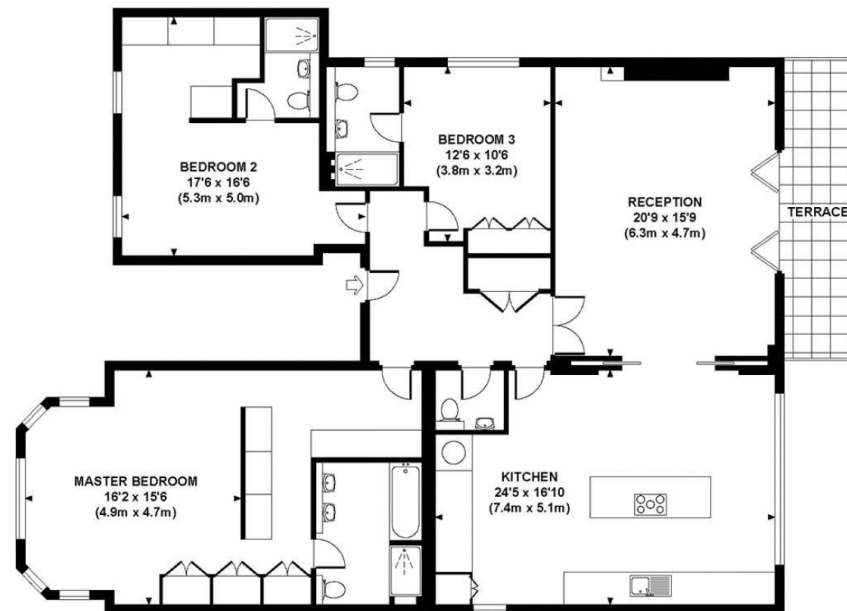








FLAT D LYNDHURST ROAD, NW3
Approximate Gross Internal Area 1785 sq ft / 165.8 sq m



FIRST FLOOR
GROSS INTERNAL
FLOOR AREA 1785 SQ FT

Although every attempt has been made to ensure accuracy, all measurements are approximate.
The floor plan's for illustrative purposes only and not to scale. Measured in accordance to RICS standards.
DE-PHOTOGRAPHY.NET

Particulars

Property

Lyndhurst Lodge, Hampstead, London, NW3
£2,500

Rooms

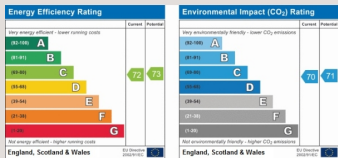


Features

- Very large 3 bedroom flat
- Large Terrace
- Large, well tended communal gardens
- Great views of London Skyline

Information

Council Tax



Oliver Kent

oliver.kent@vitaproperties.uk
+4477 7274 0351



Scan for our website





T: +4420 7759 2199

E: enquiries@vitaproperties.uk

Disclaimer: These particulars are prepared as a general guide for prospective purchasers or tenants and do not constitute, nor constitute part of, an offer or contract. All statements, descriptions, and measurements contained herein are given in good faith and are believed to be correct at the time of printing, but any intending purchaser or tenant should not rely on them as statements or representations of fact and must satisfy themselves by inspection or otherwise as to their correctness. Floor plans and photographs are for illustrative purposes only and may not be to scale. The position and size of doors, windows, appliances, and other features are approximate. Anti-Money Laundering (AML): In line with the Money Laundering, Terrorist Financing and Transfer of Funds Regulations 2017, we are required to carry out customer due diligence checks. Buyers/tenants will be asked to provide proof of identity, address, and source of funds before a sale or rental can be agreed. Data Protection (GDPR): Personal information supplied to Vita Properties will be processed in accordance with the General Data Protection Regulation (GDPR). Your details may be retained for legitimate business purposes relating to property services. Full details of our Privacy Policy are available on request.

All rights reserved.