



Lords View Two

ST JOHNS WOOD ROAD, ST JOHNS WOOD, LONDON, NW8

£845,000



We are delighted to offer this modern apartment within a sought after location. Comprising of a clean and stylish, fully-implemented kitchen with breakfast bar, large living room/ dining room, two similarly sized double bedrooms - both with built-in wardrobes, large family bathroom and separate WC.

This large and bright two bed is set on the fourth floor (with lift access) of this residential block and also offers a porterage and a private garage.

Located within a 10 minute walking distance to St John's Wood Station (Jubilee Line) and within 15 minutes of both Marylebone Overground Station and Baker Street Underground. This property is fantastically located for Regents Park, Baker Street and many other of London's most prestigious locations.





We are delighted to offer this modern apartment within a sought after location. Comprising of a clean and stylish, fully-implemented kitchen with breakfast bar, large living room/ dining room, two similarly sized double bedrooms - both with built-in wardrobes, large family bathroom and separate WC.

This large and bright two bed is set on the fourth floor (with lift access) of this residential block and also offers a portorage and a private garage. Located within a 10 minute walking distance to St John's Wood Station (Jubilee Line) and within 15 minutes of both Marylebone Overground Station and Baker Street Underground. This property is fantastically located for Regents Park, Baker Street and many other of London's most prestigious locations.

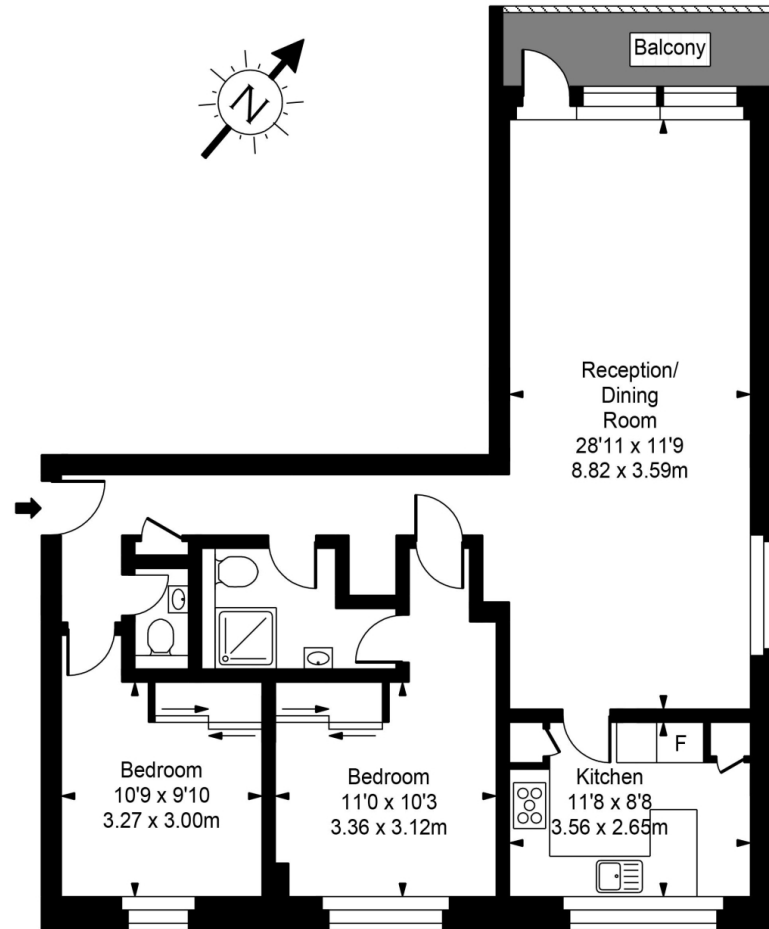








Lords View Two



Fourth Floor



Approx Gross Internal Area **906 Sq Ft - 84.17 Sq M**

FOR ILLUSTRATIVE PURPOSES ONLY. NOT TO SCALE.

Whilst every attempt has been made to ensure the accuracy of the floorplan shown, all measurements, positioning, fixtures, fittings and any other data shown are an approximate interpretation for illustrative purposes only and are not to scale. No responsibility is taken for any error, omission, misstatement or use of data shown.

Floor plan by www.bestangle.co.uk

Particulars

Property

Lords View Two, St Johns Wood Road, St Johns Wood,
£845,000, NWS

Rooms



1



1



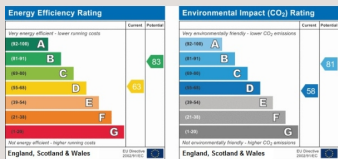
2

Features

- Two Bed
- Fourth Floor with Lift Access
- Similarly Sized Bedrooms
- Excellent Finish

Information

Council Tax



Oliver Kent

oliver.kent@vitaproperties.uk
+4477 7274 0351



Scan for our website





T: +4420 7759 2199
E: enquiries@vitaproperties.uk

Disclaimer: These particulars are prepared as a general guide for prospective purchasers or tenants and do not constitute, nor constitute part of, an offer or contract. All statements, descriptions, and measurements contained herein are given in good faith and are believed to be correct at the time of printing, but any intending purchaser or tenant should not rely on them as statements or representations of fact and must satisfy themselves by inspection or otherwise as to their correctness. Floor plans and photographs are for illustrative purposes only and may not be to scale. The position and size of doors, windows, appliances, and other features are approximate. Anti-Money Laundering (AML): In line with the Money Laundering, Terrorist Financing and Transfer of Funds Regulations 2017, we are required to carry out customer due diligence checks. Buyers/tenants will be asked to provide proof of identity, address, and source of funds before a sale or rental can be agreed. Data Protection (GDPR): Personal information supplied to Vita Properties will be processed in accordance with the General Data Protection Regulation (GDPR). Your details may be retained for legitimate business purposes relating to property services. Full details of our Privacy Policy are available on request.

All rights reserved.