



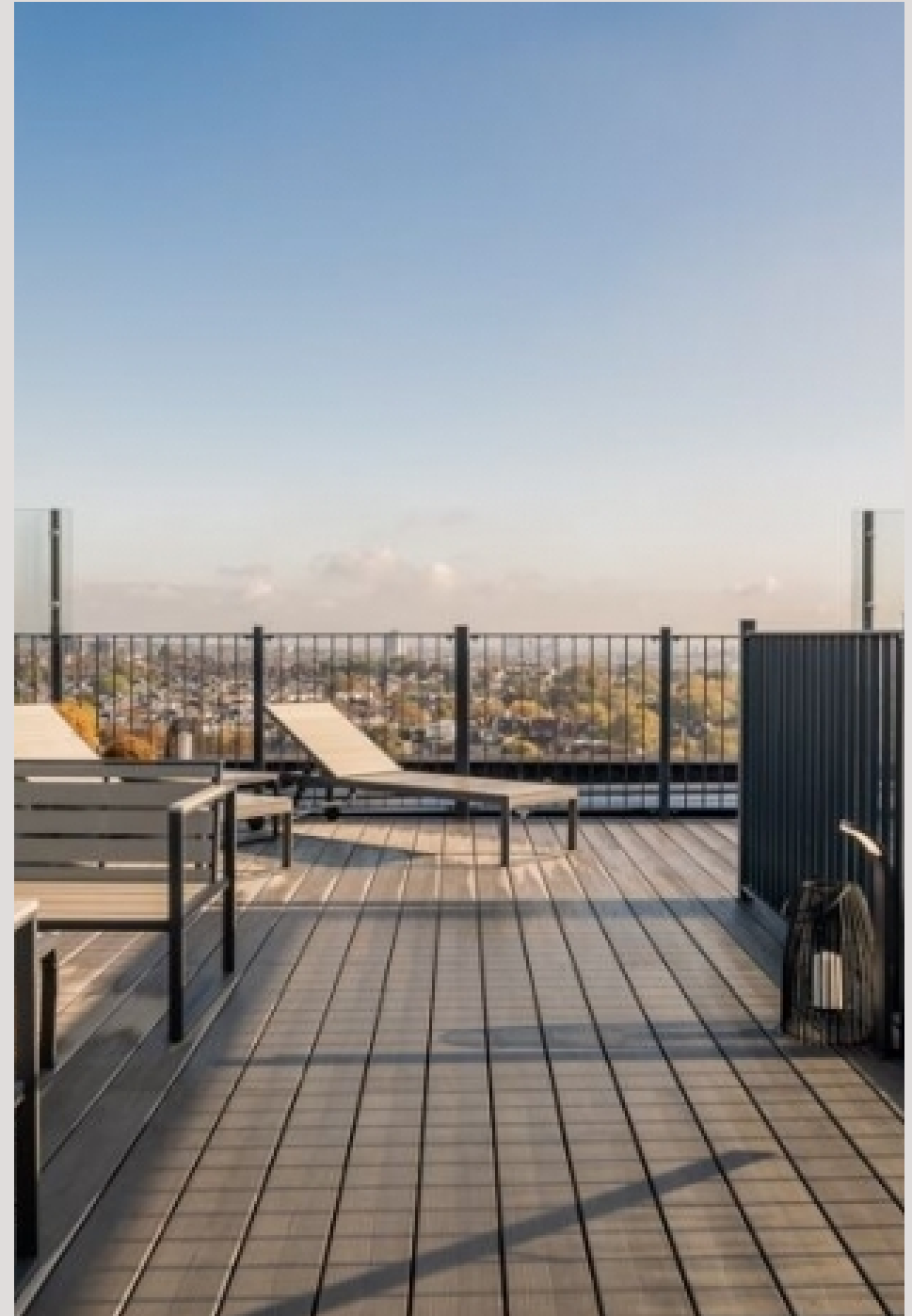
PENTHOUSE CENTRE HEIGHTS
FINCHLEY ROAD, HAMPSTEAD, LONDON, NW3

£1,500



An impeccable collection of Stunning Penthouses' incredibly situated just a 30 second walk from Swiss Cottage tube station. Arranged over the 10th, 11th and 12th floors are three newly built apartments benefiting from three bedrooms, three bathrooms, bright and airy reception, open plan contemporary kitchen with state of the art integrated white goods, excellent storage throughout and a breath taking private roof terrace boasting unparalleled 360 degree views across London.

Further benefits include on site management, direct lift access, concierge, secure telephone entry system and bike storage





An impeccable collection of Stunning Penthouses' incredibly situated just a 30 second walk from Swiss Cottage tube station. Arranged over the 10th, 11th and 12th floors are three newly built apartments benefiting from three bedrooms, three bathrooms, bright and airy reception, open plan contemporary kitchen with state of the art integrated white goods, excellent storage throughout and a breath taking private roof terrace boasting unparalleled 360 degree views across London.

Further benefits include on site management, direct lift access, concierge, secure telephone entry system and bike storage

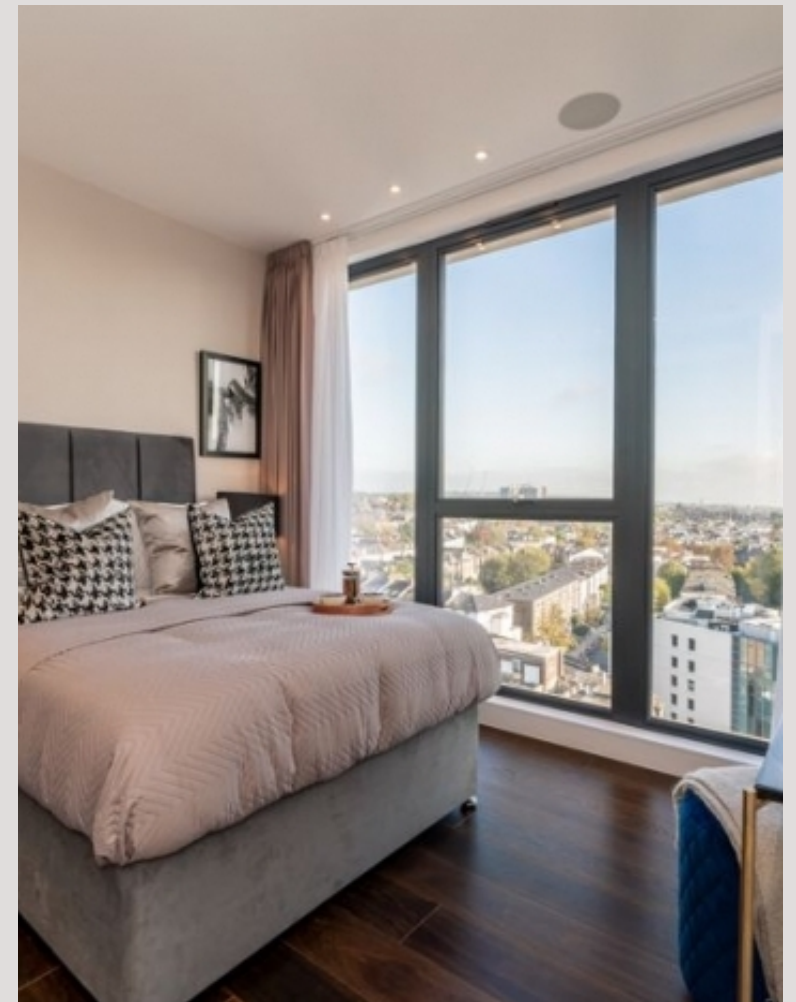








Scan for out video walkthrough

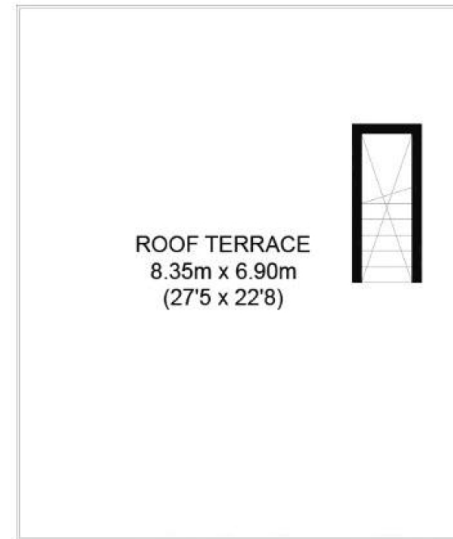




TENTH FLOOR



ELEVENTH FLOOR



TWELFTH FLOOR

CENTRE HEIGHTS PENTHOUSE

APPROXIMATE GROSS INTERNAL AREA
 TENTH FLOOR = 636 SQ. FT. (59.1 SQ. M.)
 ELEVENTH FLOOR = 864 SQ. FT. (80.3 SQ. M.)
 TWELFTH FLOOR = 20 SQ. FT. (1.9 SQ. M.)
 TOTAL = 1520 SQ. FT. (141.3 SQ. M.)

 = CEILING HEIGHT

This plan is for layout guidance only. Not drawn to scale unless stated. Windows and door openings are approximate. Whilst every care is taken in the preparation of this plan, please check all dimensions, shapes and compass bearings before making any decisions reliant upon them. Please be advised that Countrywide / our agents have not seen or reviewed any building regulations or planning permission in relation to works carried out to the property (ID596504)

Particulars

Property

PENTHOUSE CENTRE HEIGHTS, Finchley Road, Hampstead,
£6500n, NW3

Rooms



1



3



3

Features

- High specification interiors
- Roof terrace with stunning views
- Prime location close to amenities
- Seconds from Swiss Cottage & Finchley Road Underground

Information

Council Tax

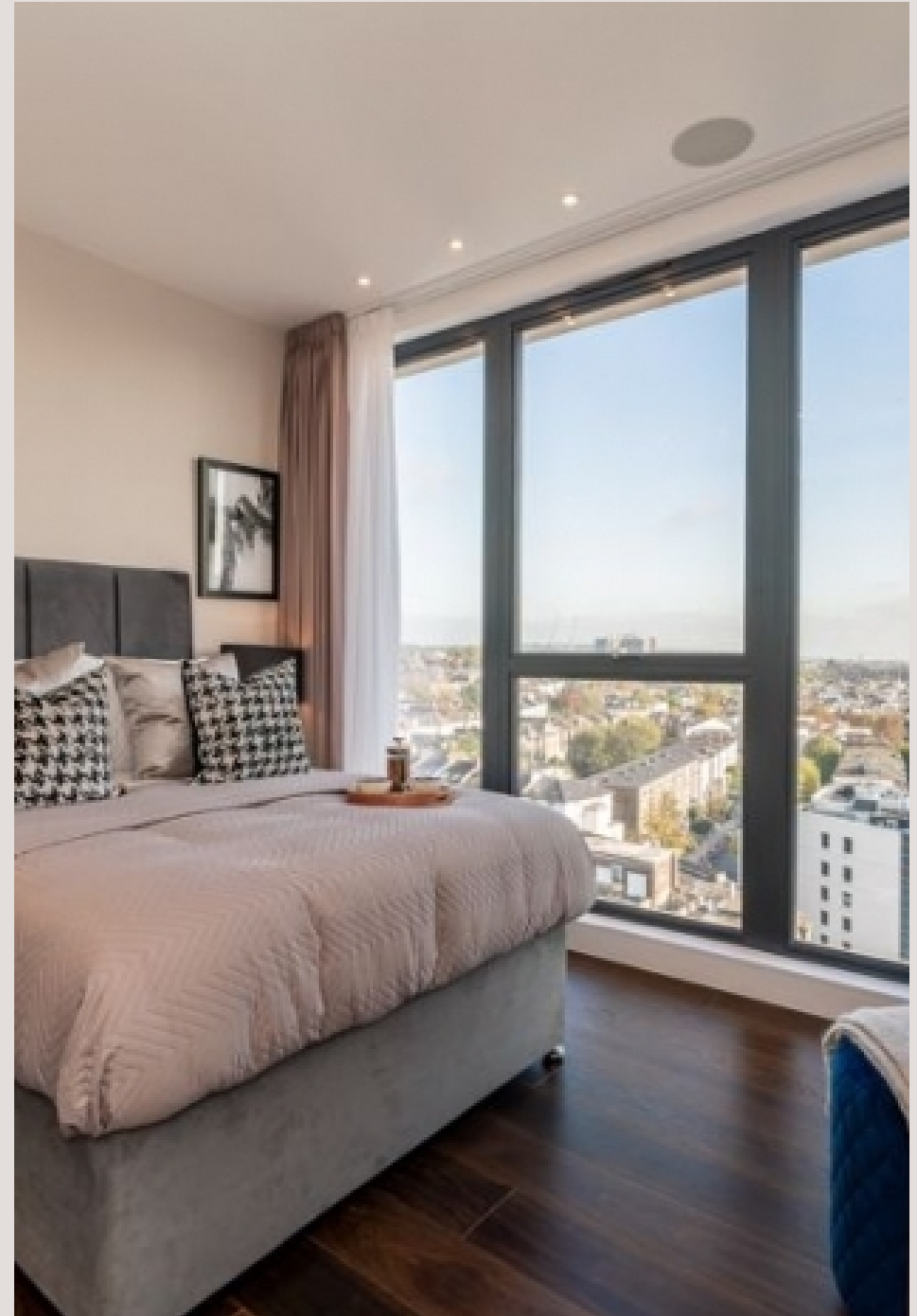


Oliver Kent

oliver.kent@vitaproperties.uk
+4477 7274 0351



Scan for our website





T: +4420 7759 2199

E: enquiries@vitaproperties.uk

Disclaimer: These particulars are prepared as a general guide for prospective purchasers or tenants and do not constitute, nor constitute part of, an offer or contract. All statements, descriptions, and measurements contained herein are given in good faith and are believed to be correct at the time of printing, but any intending purchaser or tenant should not rely on them as statements or representations of fact and must satisfy themselves by inspection or otherwise as to their correctness. Floor plans and photographs are for illustrative purposes only and may not be to scale. The position and size of doors, windows, appliances, and other features are approximate. Anti-Money Laundering (AML): In line with the Money Laundering, Terrorist Financing and Transfer of Funds Regulations 2017, we are required to carry out customer due diligence checks. Buyers/tenants will be asked to provide proof of identity, address, and source of funds before a sale or rental can be agreed. Data Protection (GDPR): Personal information supplied to Vita Properties will be processed in accordance with the General Data Protection Regulation (GDPR). Your details may be retained for legitimate business purposes relating to property services. Full details of our Privacy Policy are available on request.

All rights reserved.