



Harley Road

SWISS COTTAGE, LONDON, NW3

£2,450



Available 21 November 2022 - We are delighted to offer this well presented & modern 4/5 bed roomed townhouse (approx.

2,405 sq.ft.

/ 223 sq.m.) located within minutes of Swiss Cottage Underground Station as well as close to the fashionable St John's Wood & Primrose Hill.

The house is arranged over 4 floors and comprises reception room, family room, dining room, kitchen / breakfast room, 4 bedrooms with 4 en suite bathrooms, store room, private garden and off street parking





Available 21 November 2022 - We are delighted to offer this well presented & modern 4/5 bed roomed townhouse (approx.

2,405 sq.ft.

/ 223 sq.m.) located within minutes of Swiss Cottage Underground Station as well as close to the fashionable St John's Wood & Primrose Hill.

The house is arranged over 4 floors and comprises reception room, family room, dining room, kitchen / breakfast room, 4 bedrooms with 4 en suite bathrooms, store room, private garden and off street parking



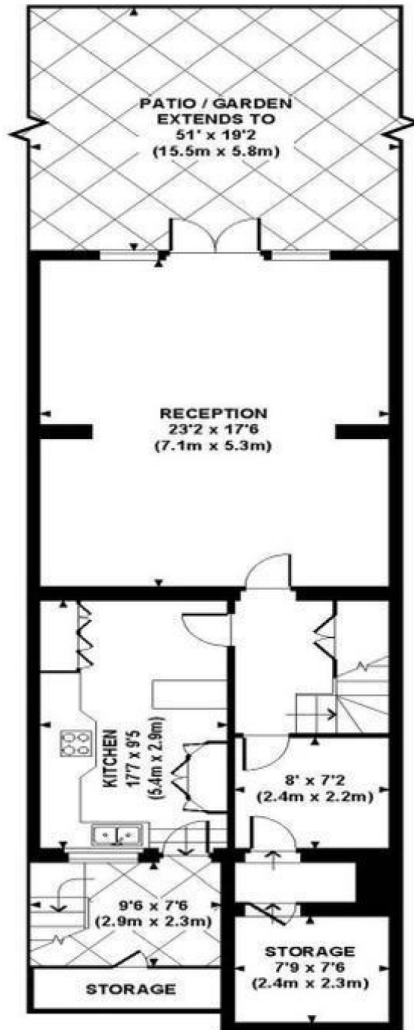






HARLEY ROAD, NW3

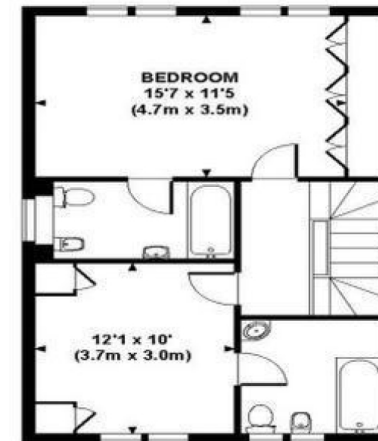
Approx. gross internal area
2479 Sq Ft. / 231 Sq M.



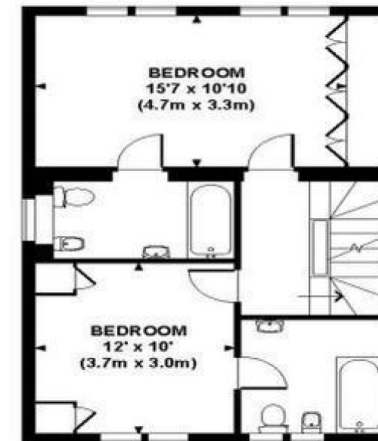
LOWER GROUND FLOOR



GROUND FLOOR



SECOND FLOOR



FIRST FLOOR

Particulars

Property

Harley Road, Swiss Cottage, London, NW3
£2,450

Rooms



2



4



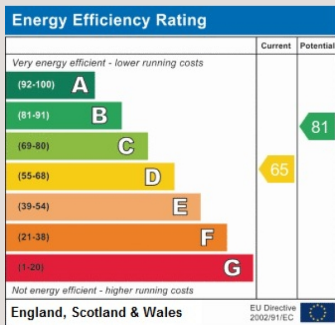
4

Features

- Terraced House
- 3 Floors
- Private Garden
- Town House

Information

Council Tax



Oliver Kent

oliver.kent@vitaproperties.uk
+4477 7274 0351



Scan for our website





T: +4420 7759 2199
E: enquiries@vitaproperties.uk

Disclaimer: These particulars are prepared as a general guide for prospective purchasers or tenants and do not constitute, nor constitute part of, an offer or contract. All statements, descriptions, and measurements contained herein are given in good faith and are believed to be correct at the time of printing, but any intending purchaser or tenant should not rely on them as statements or representations of fact and must satisfy themselves by inspection or otherwise as to their correctness. Floor plans and photographs are for illustrative purposes only and may not be to scale. The position and size of doors, windows, appliances, and other features are approximate. Anti-Money Laundering (AML): In line with the Money Laundering, Terrorist Financing and Transfer of Funds Regulations 2017, we are required to carry out customer due diligence checks. Buyers/tenants will be asked to provide proof of identity, address, and source of funds before a sale or rental can be agreed. Data Protection (GDPR): Personal information supplied to Vita Properties will be processed in accordance with the General Data Protection Regulation (GDPR). Your details may be retained for legitimate business purposes relating to property services. Full details of our Privacy Policy are available on request.

All rights reserved.