



Boydell Court St Johns Wood Park

ST JOHNS WOOD, LONDON NW8

£1,900



A stunning three bed apartment in Boydell Court, NW8. Set within a gated community residents benefit from a dedicated 24-hour porterage, alarm and video entry, as well as the added benefit of lockers, garages and parking space available for rent via a separate negotiation.

This is a truly stunning apartment with spectacular views from the private conservatory. You have three large double bedrooms, two benefiting from en-suite bathrooms. A large, open-plan kitchen and living space, very modern in its design. And a separate WC. Finally you have the incredible roof terrace off of the conservatory. The apartment has been recently refurbished to the highest standard and with particular attention to detail. Some of the beautiful features include stone Italian work surfaces, Bosche/Miele appliances and dimmer switches on all lights.







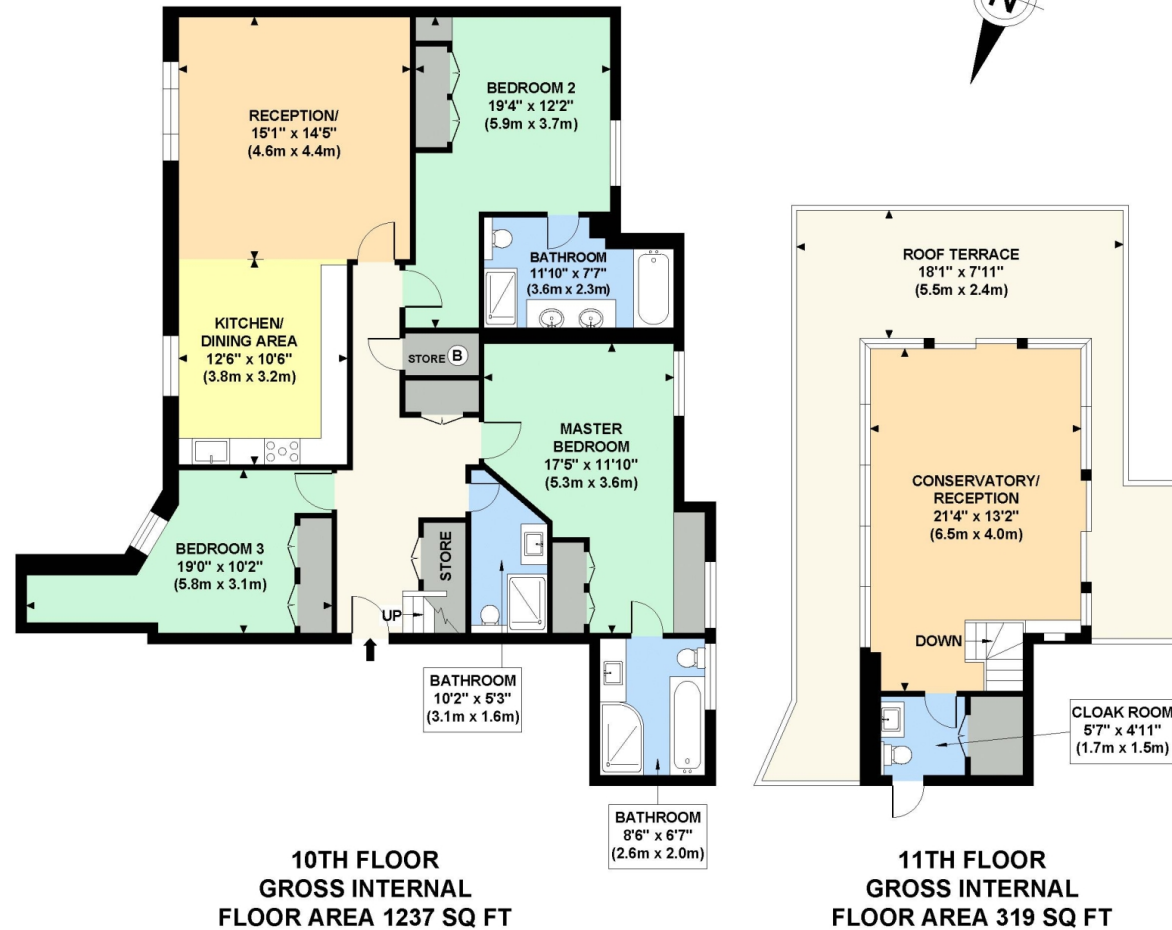




PENTHOUSE 1005 BOYDELL COURT

Approximate Gross Internal Area

1555 sq ft / 144.50 sq m



Although every attempt has been made to ensure accuracy, all measurements are approximate.
The floor plan's for illustrative purposes only and not to scale. Measured in accordance to RICS standards.
GBProPhotos

Particulars

Property

Boydell Court St Johns Wood Park, St Johns Wood, London
£1,980

Rooms



2



3



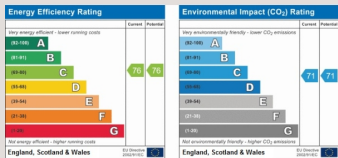
3

Features

- Penthouse Apartment
- Bespoke Interior Design
- Spectacular Views from Roof Terrace!!
- Conservatory

Information

Council Tax



Oliver Kent

oliver.kent@vitaproperties.uk
+4477 7274 0351



Scan for our website





T: +4420 7759 2199

E: enquiries@vitaproperties.uk

Disclaimer: These particulars are prepared as a general guide for prospective purchasers or tenants and do not constitute, nor constitute part of, an offer or contract. All statements, descriptions, and measurements contained herein are given in good faith and are believed to be correct at the time of printing, but any intending purchaser or tenant should not rely on them as statements or representations of fact and must satisfy themselves by inspection or otherwise as to their correctness. Floor plans and photographs are for illustrative purposes only and may not be to scale. The position and size of doors, windows, appliances, and other features are approximate. Anti-Money Laundering (AML): In line with the Money Laundering, Terrorist Financing and Transfer of Funds Regulations 2017, we are required to carry out customer due diligence checks. Buyers/tenants will be asked to provide proof of identity, address, and source of funds before a sale or rental can be agreed. Data Protection (GDPR): Personal information supplied to Vita Properties will be processed in accordance with the General Data Protection Regulation (GDPR). Your details may be retained for legitimate business purposes relating to property services. Full details of our Privacy Policy are available on request.

All rights reserved.