



Eton Road

BELSIZE PARK, LONDON, NW3

£540



We are delighted to offer this extremely spacious two bed, two bath, 1st floor apartment, which boasts classic original design features, high ceilings, fireplace, and a fully fitted kitchen. The flat further benefits from an “unofficial” balcony, a large reception room and two great sized double bedrooms with the master offering an en-suite shower room in addition to the full bath. Eton Road is a residential street conveniently located for the shops, bars and restaurants of England’s Lane. The closest underground station is Belsize Park.





We are delighted to offer this extremely spacious two bed, two bath, 1st floor apartment, which boasts classic original design features, high ceilings, fireplace, and a fully fitted kitchen. The flat further benefits from an “unofficial” balcony, a large reception room and two great sized double bedrooms with the master offering an en-suite shower room in addition to the full bath. Eton Road is a residential street conveniently located for the shops, bars and restaurants of England’s Lane. The closest underground station is Belsize Park.







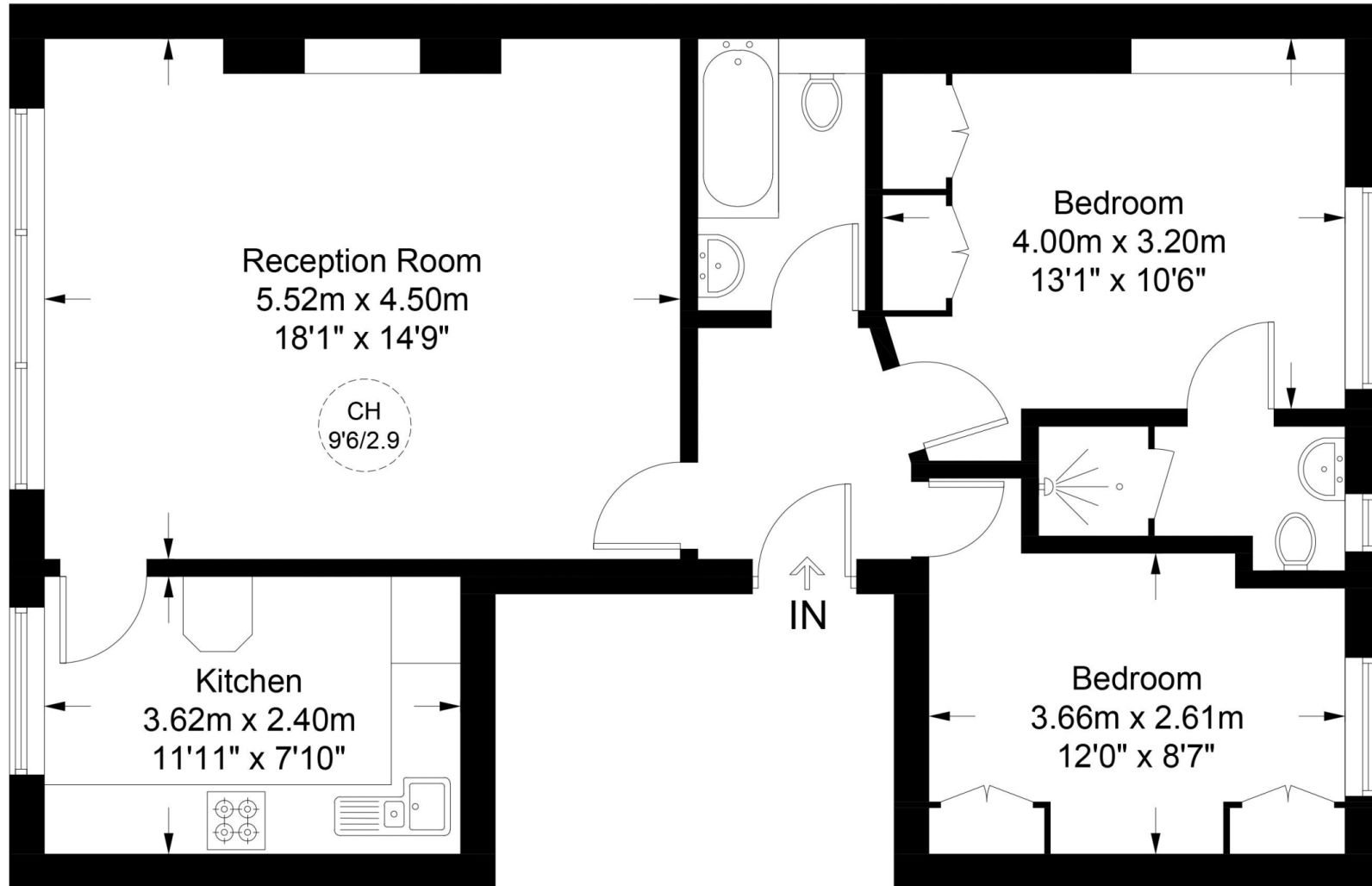


Scan for out video walkthrough



Eton Road, Belsize Park, NW3

Approximate Gross Internal Area = 744 sq ft / 69.1 sq m



First Floor

This plan is for layout guidance only. Not drawn to scale unless stated. Windows and door openings are approximate. Whilst every care is taken in the preparation of this plan, please check all dimensions, shapes and compass bearings before making any decisions reliant upon them. (ID793843)

Particulars

Property

Eton Road, Belsize Park, London, NW3
£540

Rooms



1



2



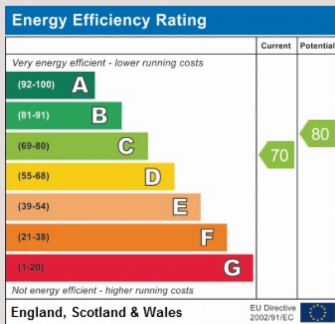
2

Features

- Large reception
- 2 bathrooms
- Fully fitted kitchen
- Balcony

Information

Council Tax



Oliver Kent

oliver.kent@vitaproperties.uk
+4477 7274 0351



Scan for our website





T: +4420 7759 2199
E: enquiries@vitaproperties.uk

Disclaimer: These particulars are prepared as a general guide for prospective purchasers or tenants and do not constitute, nor constitute part of, an offer or contract. All statements, descriptions, and measurements contained herein are given in good faith and are believed to be correct at the time of printing, but any intending purchaser or tenant should not rely on them as statements or representations of fact and must satisfy themselves by inspection or otherwise as to their correctness. Floor plans and photographs are for illustrative purposes only and may not be to scale. The position and size of doors, windows, appliances, and other features are approximate. Anti-Money Laundering (AML): In line with the Money Laundering, Terrorist Financing and Transfer of Funds Regulations 2017, we are required to carry out customer due diligence checks. Buyers/tenants will be asked to provide proof of identity, address, and source of funds before a sale or rental can be agreed. Data Protection (GDPR): Personal information supplied to Vita Properties will be processed in accordance with the General Data Protection Regulation (GDPR). Your details may be retained for legitimate business purposes relating to property services. Full details of our Privacy Policy are available on request.

All rights reserved.