



Lyndhurst Gardens
HAMPSTEAD, LONDON NW3

£650,000



Presenting a lovely one bed apartment, located on a picturesque, tree-lined street in Hampstead NW3.

Set on the second and third floor of this attractive, red-brick conversion, this recently refurbished home comprises of a bright, semi-open planned reception with panoramic views across London, a fully integrated kitchen, one large double bedroom with a fabulous walk-in wardrobe, and finally a large bathroom. Further benefits include access to 160 ft manicured communal gardens and recently refurbished communal areas.

Located equidistant between Hampstead Village to Belsize Village this property offers a plethora of local shops, boutique cafe's and restaurants, as well as transport links from Belsize Park (Northern) & Finchley Road (Northern, Metropolitan & Overground)





Presenting a lovely one bed apartment, located on a picturesque, tree-lined street in Hampstead NW3.

Set on the second and third floor of this attractive, red-brick conversion, this recently refurbished home comprises of a bright, semi-open planned reception with panoramic views across London, a fully integrated kitchen, one large double bedroom with a fabulous walk-in wardrobe, and finally a large bathroom. Further benefits include access to 160 ft manicured communal gardens and recently refurbished communal areas.

Located equidistant between Hampstead Village to Belsize Village this property offers a plethora of local shops, boutique cafe's and restaurants, as well as transport links from Belsize Park (Northern) & Finchley Road (Northern, Metropolitan & Overground)

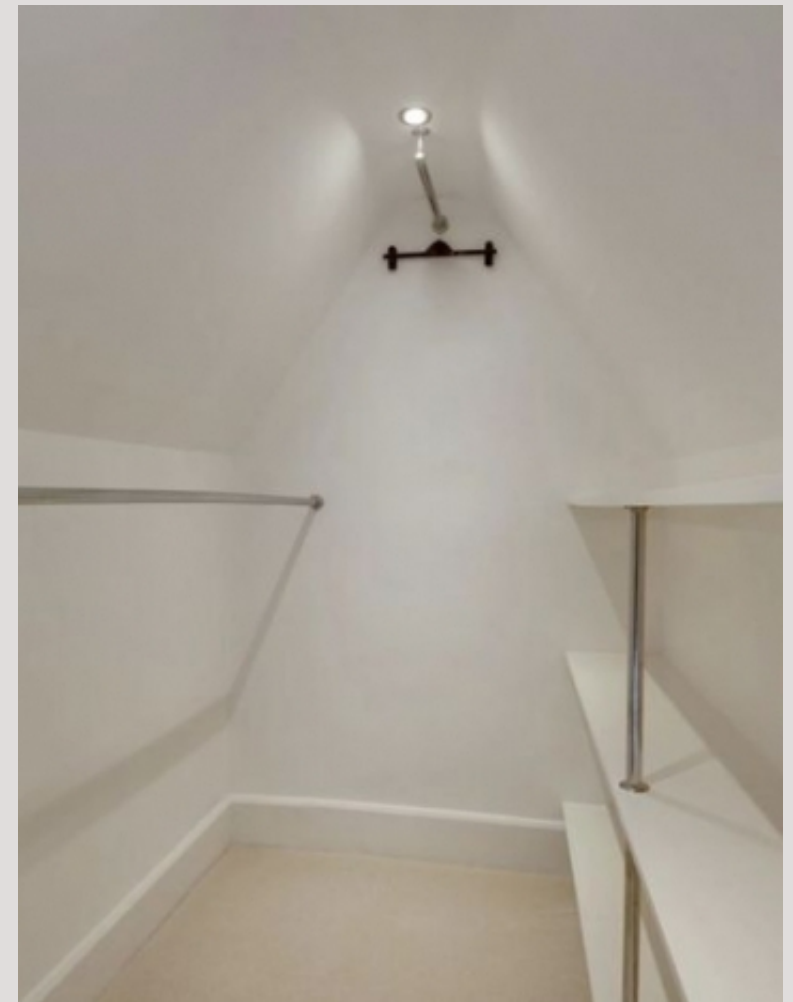




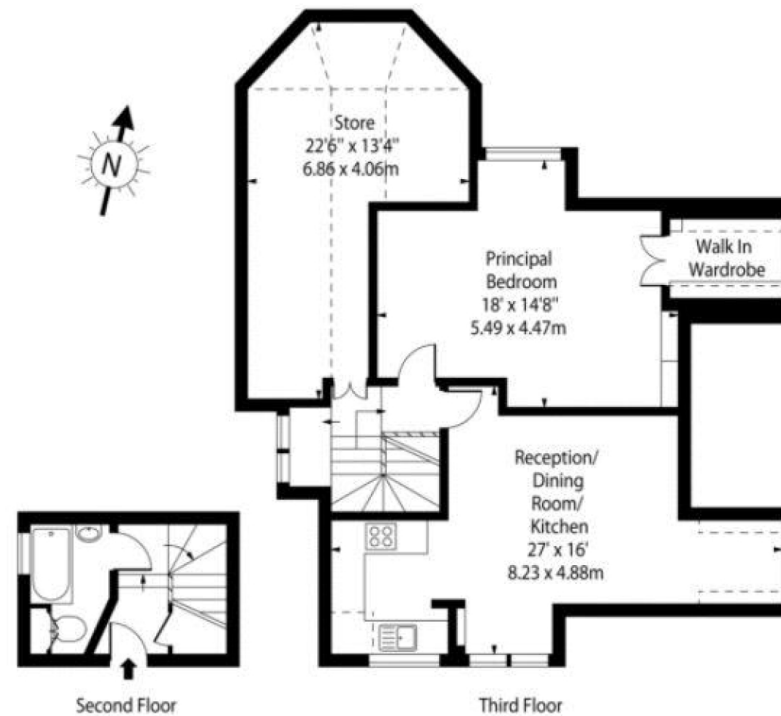




Scan for out video walkthrough



Lyndhurst Gardens,
Belsize Park, NW3



Approx Gross Internal Area 735 Sq Ft - 68.28 Sq M

Approx Floor Area Including Restricted Heights 899 Sq Ft - 83.52 Sq M

For Illustration Purposes Only - Not To Scale Floor Plan by www.nogaphotostudio.com Ref: No.41752

This floor plan should be used as a general outline for guidance only. Any intending purchaser or lessee should satisfy themselves by inspection, searches, enquiries and full survey as to the correctness of each statement. Any areas, measurements or distances quoted are approximate and should not be used to value a property or be the basis of any sale or let.

Particulars

Property

Lyndhurst Gardens, Hampstead, London NW3
£650,000

Rooms



1



1



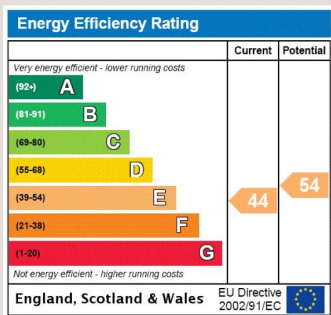
1

Features

- Quiet Tree Lined Road
- Panoramic views across London
- Refurbished communal area
- Share of Freehold

Information

Council Tax



Oliver Kent

oliver.kent@vitaproperties.uk
+4477 7274 0351



Scan for our website





T: +4420 7759 2199

E: enquiries@vitaproperties.uk

Disclaimer: These particulars are prepared as a general guide for prospective purchasers or tenants and do not constitute, nor constitute part of, an offer or contract. All statements, descriptions, and measurements contained herein are given in good faith and are believed to be correct at the time of printing, but any intending purchaser or tenant should not rely on them as statements or representations of fact and must satisfy themselves by inspection or otherwise as to their correctness. Floor plans and photographs are for illustrative purposes only and may not be to scale. The position and size of doors, windows, appliances, and other features are approximate. Anti-Money Laundering (AML): In line with the Money Laundering, Terrorist Financing and Transfer of Funds Regulations 2017, we are required to carry out customer due diligence checks. Buyers/tenants will be asked to provide proof of identity, address, and source of funds before a sale or rental can be agreed. Data Protection (GDPR): Personal information supplied to Vita Properties will be processed in accordance with the General Data Protection Regulation (GDPR). Your details may be retained for legitimate business purposes relating to property services. Full details of our Privacy Policy are available on request.

All rights reserved.