



Adelaide Road

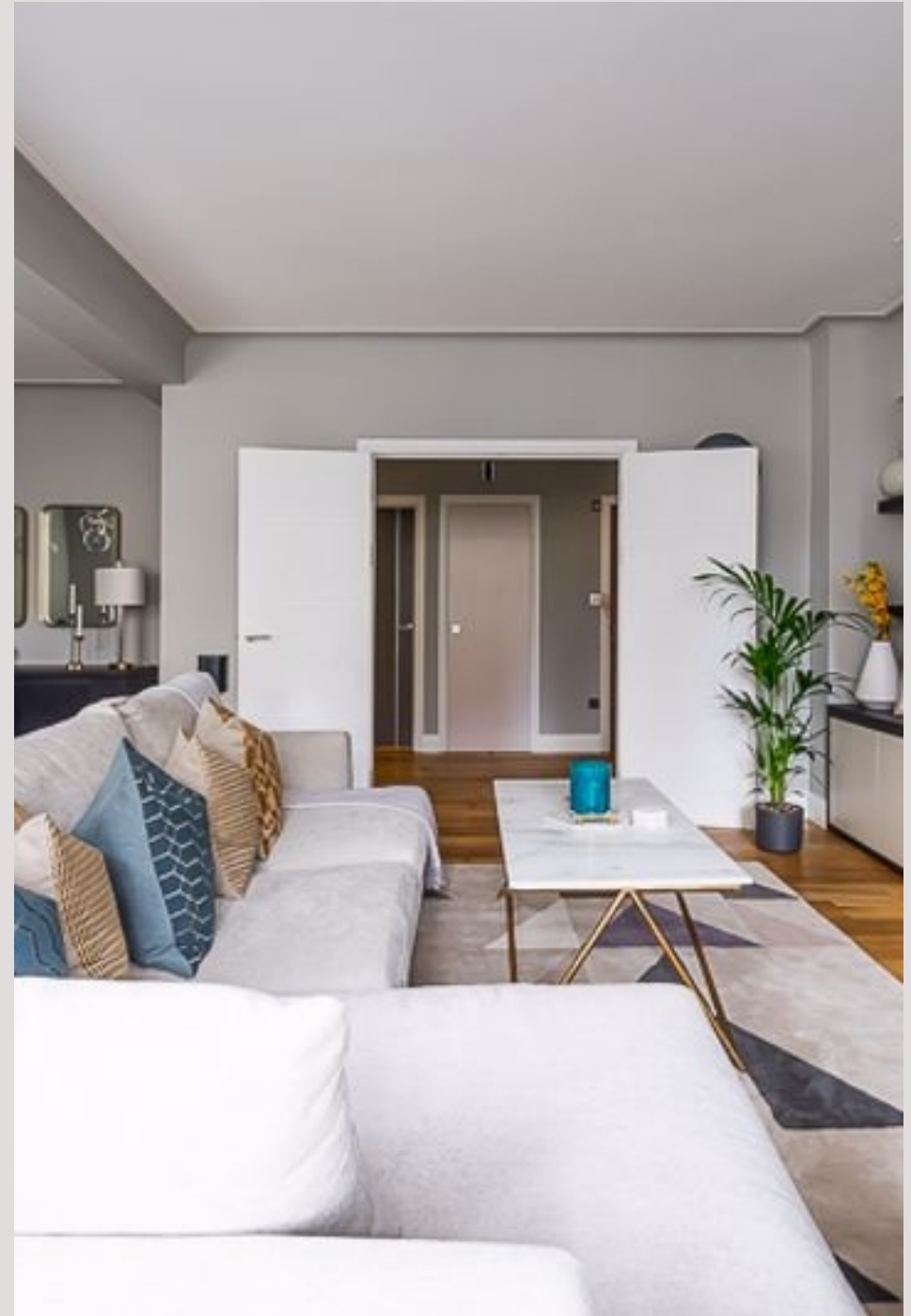
SWISS COTTAGE, LONDON NW3

£980



We are delighted to offer this exquisite recently refurbished interior designed apartment in the heart of Swiss Cottage. The south facing second floor apartment of a 1930's portered mansion block that features an ample amount of natural light and boasting over 1300 sq ft has very recently gone through a complete renovation with modern fixtures and fittings.

Comprising of a large double aspect living room, high-spec bespoke german kitchen/diner, three double bedrooms with fitted wardrobes, italian family bathroom, shower room and guest cloak room. The property is located on the borders of St Johns Wood and Swiss cottage, benefiting from short walk to Primrose Hill and trendy St Johns Wood High Street. The property also provides great storage throughout, fantastic transport links and convenience of local amenities of Swiss Cottage and Finchley Road.





We are delighted to offer this exquisite recently refurbished interior designed apartment in the heart of Swiss Cottage. The south facing second floor apartment of a 1930's portered mansion block that features an ample amount of natural light and boasting over 1300 sq ft has very recently gone through a complete renovation with modern fixtures and fittings.

Comprising of a large double aspect living room, high-spec bespoke german kitchen/diner, three double bedrooms with fitted wardrobes, italian family bathroom, shower room and guest cloak room. The property is located on the borders of St Johns Wood and Swiss cottage, benefiting from short walk to Primrose Hill and trendy St Johns Wood High Street. The property also provides great storage throughout, fantastic transport links and convenience of local amenities of Swiss Cottage and Finchley Road.

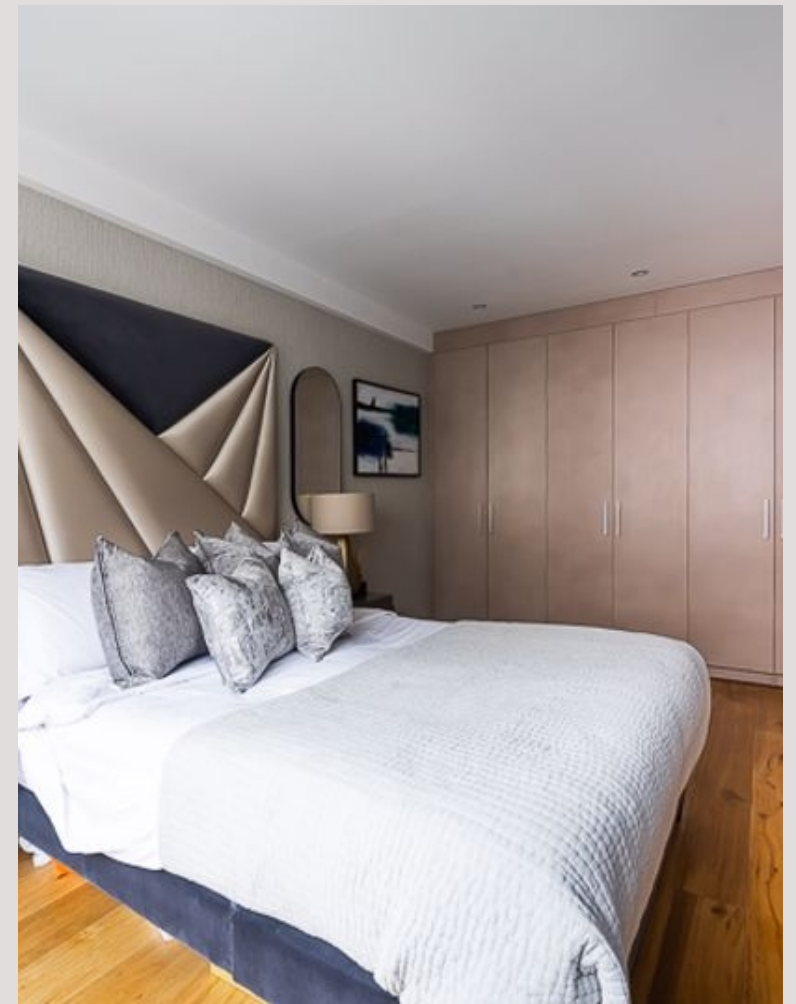




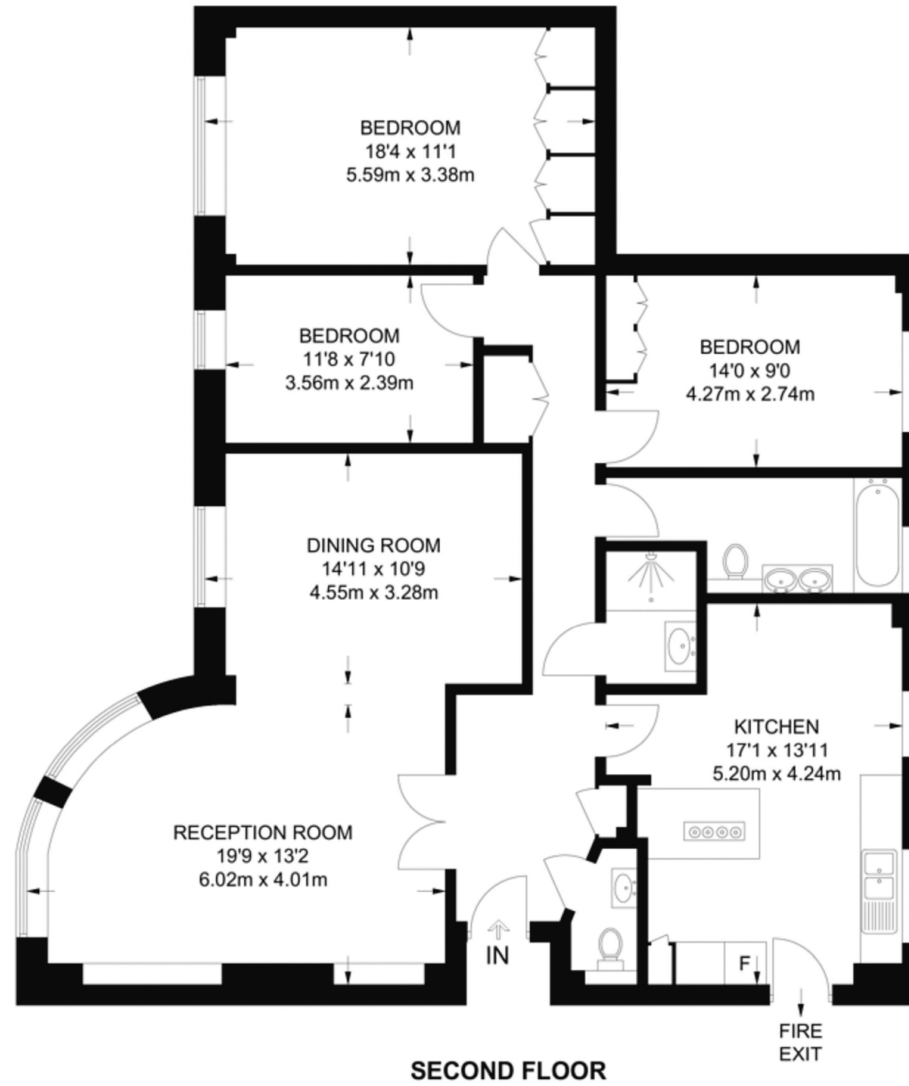




Scan for out video walkthrough



APPROXIMATE FLOOR AREA = 1373 SQ FT / 127.6 SQ M
INCLUDING LIMITED USE AREA (31 SQ FT / 2.9 SQ M)



Surveyed and drawn in accordance with the International Property Measurement Standards (IPMS 2: Residential)



Particulars

Property

Adelaide Road, Swiss Cottage, London NW3
£980

Rooms



2



2



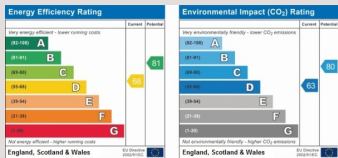
3

Features

- South facing
- Interior designed
- Close to St Johns Wood High Street & Swiss Cottage Tube
- Portered mansion block

Information

Council Tax



Oliver Kent

oliver.kent@vitaproperties.uk
+4477 7274 0351



Scan for our website





T: +4420 7759 2199

E: enquiries@vitaproperties.uk

Disclaimer: These particulars are prepared as a general guide for prospective purchasers or tenants and do not constitute, nor constitute part of, an offer or contract. All statements, descriptions, and measurements contained herein are given in good faith and are believed to be correct at the time of printing, but any intending purchaser or tenant should not rely on them as statements or representations of fact and must satisfy themselves by inspection or otherwise as to their correctness. Floor plans and photographs are for illustrative purposes only and may not be to scale. The position and size of doors, windows, appliances, and other features are approximate. Anti-Money Laundering (AML): In line with the Money Laundering, Terrorist Financing and Transfer of Funds Regulations 2017, we are required to carry out customer due diligence checks. Buyers/tenants will be asked to provide proof of identity, address, and source of funds before a sale or rental can be agreed. Data Protection (GDPR): Personal information supplied to Vita Properties will be processed in accordance with the General Data Protection Regulation (GDPR). Your details may be retained for legitimate business purposes relating to property services. Full details of our Privacy Policy are available on request.

All rights reserved.