



Avenue Mansions
HAMPSTEAD, LONDON NW3

£1,300,000



Larger than average character filled first floor
THREE BEDROOM apartment, with high ceilings
throughout situated within this prestigious
Mansion Block (BAM Estate). The property offers
over 2000sq ft of lateral living and benefits from:
Two large reception rooms retaining many original
features, tiled kitchen/breakfast room, utility
room, three bathrooms.
Further benefits include: Beautifully maintained
landscaped communal gardens and a first class
porterage/management service. The development
is within walking distance to West Hampstead that
offers a variety of popular shops, restaurants and
coffee bars. Transportation links include West
Hampstead tube station (Jubilee Line) and West
Hampstead (Thames Link). Hampstead & Finchley
Road transport links are also a short walk away.
Viewings are highly recommended.





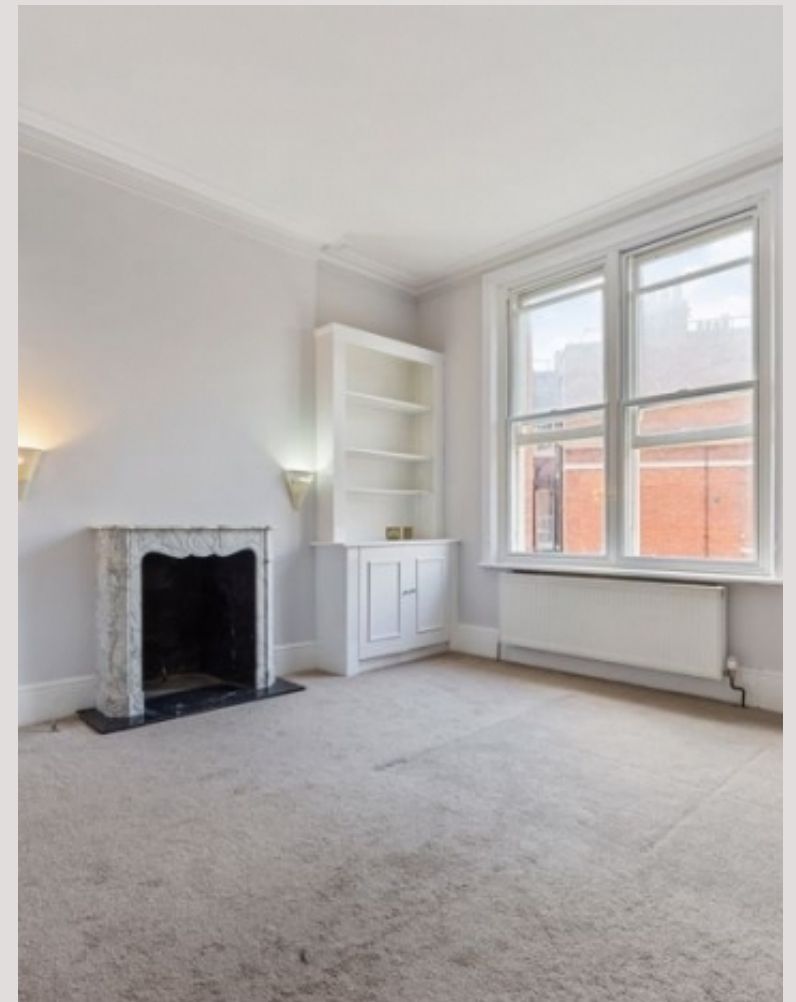
Larger than average character filled first floor THREE BEDROOM apartment, with high ceilings throughout situated within this prestigious Mansion Block (BAM Estate). The property offers over 2000sq ft of lateral living and benefits from: Two large reception rooms retaining many original features, tiled kitchen/breakfast room, utility room, three bathrooms. Further benefits include: Beautifully maintained landscaped communal gardens and a first class portorage/management service. The development is within walking distance to West Hampstead that offers a variety of popular shops, restaurants and coffee bars. Transportation links include West Hampstead tube station (Jubilee Line) and West Hampstead (Thames Link). Hampstead & Finchley Road transport links are also a short walk away. Viewings are highly recommended.







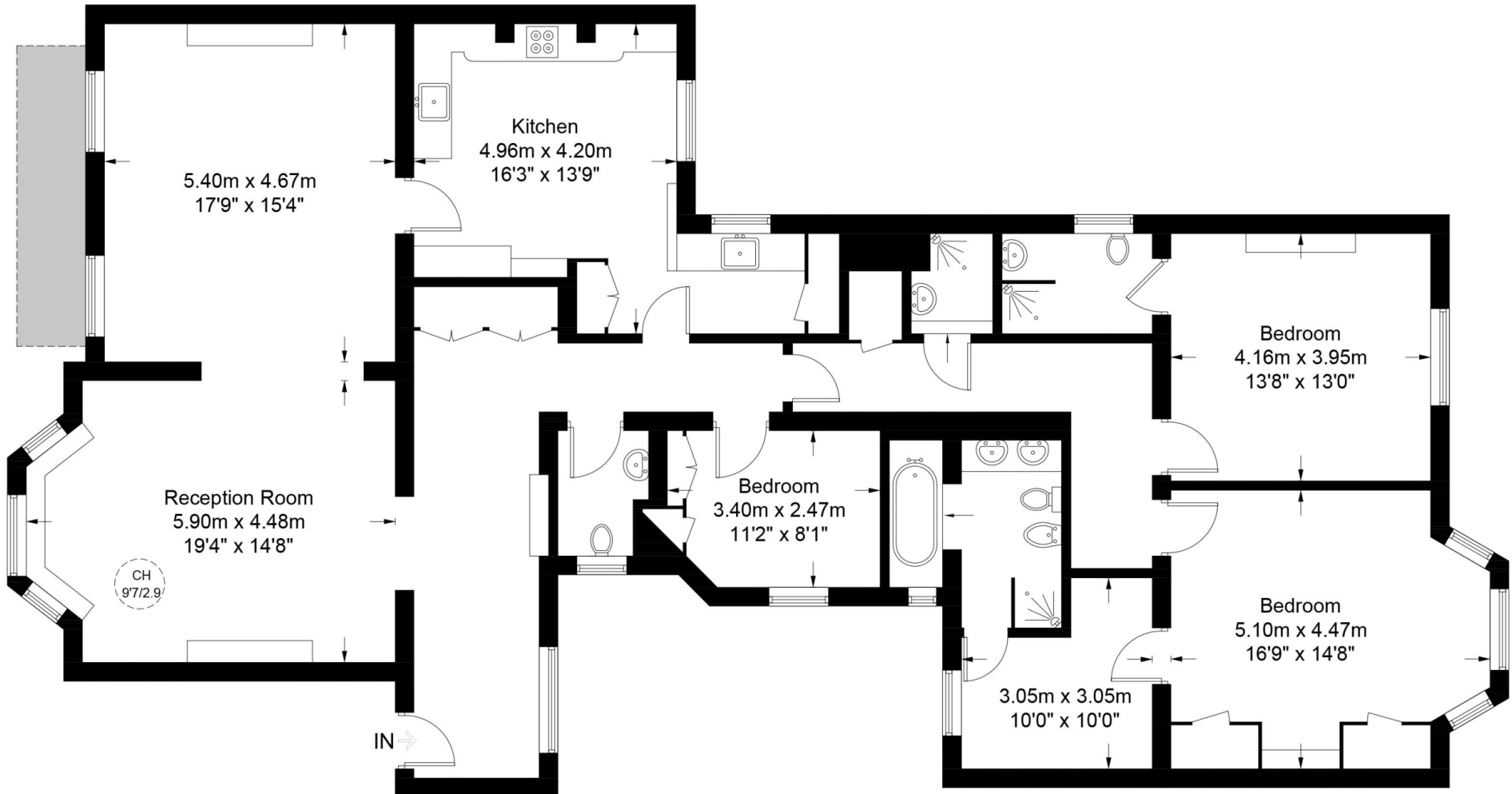
Scan for out video walkthrough





Avenue Mansions, NW37AU

Approximate Gross Internal Area = 2028 sq ft / 188.4 sq m



First Floor

This plan is for layout guidance only. Not drawn to scale unless stated. Windows and door openings are approximate. Whilst every care is taken in the preparation of this plan, please check all dimensions, shapes and compass bearings before making any decisions reliant upon them. (ID748766)

Particulars

Property

Avenue Mansions, Hampstead, London NW3
£1,300,000

Rooms



2



3



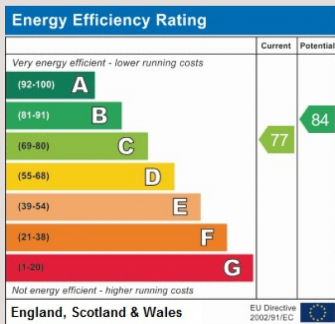
3

Features

- First Floor
- Lift
- High Ceilings
- Over 2000 SQFT

Information

Council Tax



Oliver Kent

oliver.kent@vitaproperties.uk
+4477 7274 0351



Scan for our website





T: +4420 7759 2199
E: enquiries@vitaproperties.uk

Disclaimer: These particulars are prepared as a general guide for prospective purchasers or tenants and do not constitute, nor constitute part of, an offer or contract. All statements, descriptions, and measurements contained herein are given in good faith and are believed to be correct at the time of printing, but any intending purchaser or tenant should not rely on them as statements or representations of fact and must satisfy themselves by inspection or otherwise as to their correctness. Floor plans and photographs are for illustrative purposes only and may not be to scale. The position and size of doors, windows, appliances, and other features are approximate. Anti-Money Laundering (AML): In line with the Money Laundering, Terrorist Financing and Transfer of Funds Regulations 2017, we are required to carry out customer due diligence checks. Buyers/tenants will be asked to provide proof of identity, address, and source of funds before a sale or rental can be agreed. Data Protection (GDPR): Personal information supplied to Vita Properties will be processed in accordance with the General Data Protection Regulation (GDPR). Your details may be retained for legitimate business purposes relating to property services. Full details of our Privacy Policy are available on request.

All rights reserved.