



Court Close

ST JOHNS WOOD PARK, LONDON, NW8

£2,475



A spacious and modern four bedroom house available in this prestigious gated development, St Johns Wood, NW8.

This property comprises of a sizable open-plan kitchen and living-room, which leads onto a large private garden boasting a pleasing mixture of deck space and lawn area. A large master bedroom with built in wardrobes, en-suite bathroom access and direct access onto the terrace. You have three further double bedrooms - all offering lovely hardwood floors. You have a further three bathrooms, all in excellent condition.

This property boasts many additional benefits, including air conditioning in all rooms, multi-jet powered showers, dimmable light switches in all rooms as well as a dedicated 24 hour concierge.

The property is within walking distance of St John's Wood and Swiss Cottage Underground Station (Jubilee Line) and moments from Regents Park





A spacious and modern four bedroom house available in this prestigious gated development, St Johns Wood, NW8.

This property comprises of a sizable open-plan kitchen and living-room, which leads onto a large private garden boasting a pleasing mixture of deck space and lawn area. A large master bedroom with built in wardrobes, en-suite bathroom access and direct access onto the terrace. You have three further double bedrooms - all offering lovely hardwood floors. You have a further three bathrooms, all in excellent condition.

This property boasts many additional benefits, including air conditioning in all rooms, multi-jet powered showers, dimmable light switches in all rooms as well as a dedicated 24 hour concierge.

The property is within walking distance of St John's Wood and Swiss Cottage Underground Station (Jubilee Line) and moments from Regents Park



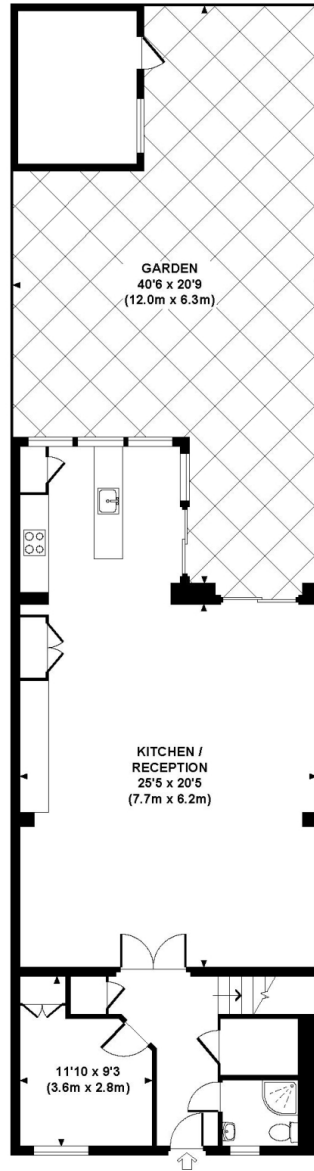




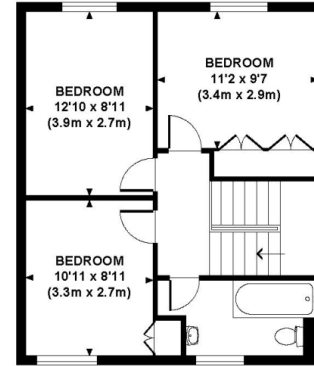


COURT CLOSE

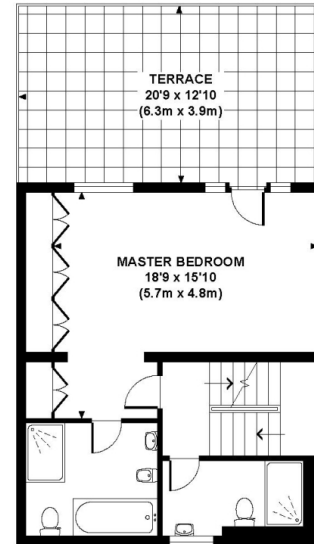
Approximate Gross Internal Area 1876 sq ft / 174.5 sq m



GROUND FLOOR
GROSS INTERNAL
FLOOR AREA 902 SQ FT



SECOND FLOOR
GROSS INTERNAL
FLOOR AREA 487 SQ FT



FIRST FLOOR
GROSS INTERNAL
FLOOR AREA 487 SQ FT

Although every attempt has been made to ensure accuracy, all measurements are approximate. The floor plan's for illustrative purposes only and not to scale. Measured in accordance to RICS standards. DE-PHOTOGRAPHY.NET

Particulars

Property

Court Close, St Johns Wood Park, London, NW8
£2,475

Rooms

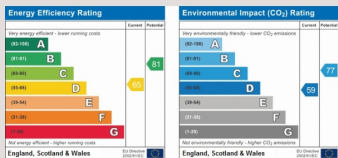


Features

- Terraced House
- Abundance of Outside Space
- Private Gated Development
- 24 Hour Concierge

Information

Council Tax



Oliver Kent

oliver.kent@vitaproperties.uk
+4477 7274 0351



Scan for our website





T: +4420 7759 2199

E: enquiries@vitaproperties.uk

Disclaimer: These particulars are prepared as a general guide for prospective purchasers or tenants and do not constitute, nor constitute part of, an offer or contract. All statements, descriptions, and measurements contained herein are given in good faith and are believed to be correct at the time of printing, but any intending purchaser or tenant should not rely on them as statements or representations of fact and must satisfy themselves by inspection or otherwise as to their correctness. Floor plans and photographs are for illustrative purposes only and may not be to scale. The position and size of doors, windows, appliances, and other features are approximate. Anti-Money Laundering (AML): In line with the Money Laundering, Terrorist Financing and Transfer of Funds Regulations 2017, we are required to carry out customer due diligence checks. Buyers/tenants will be asked to provide proof of identity, address, and source of funds before a sale or rental can be agreed. Data Protection (GDPR): Personal information supplied to Vita Properties will be processed in accordance with the General Data Protection Regulation (GDPR). Your details may be retained for legitimate business purposes relating to property services. Full details of our Privacy Policy are available on request.

All rights reserved.