



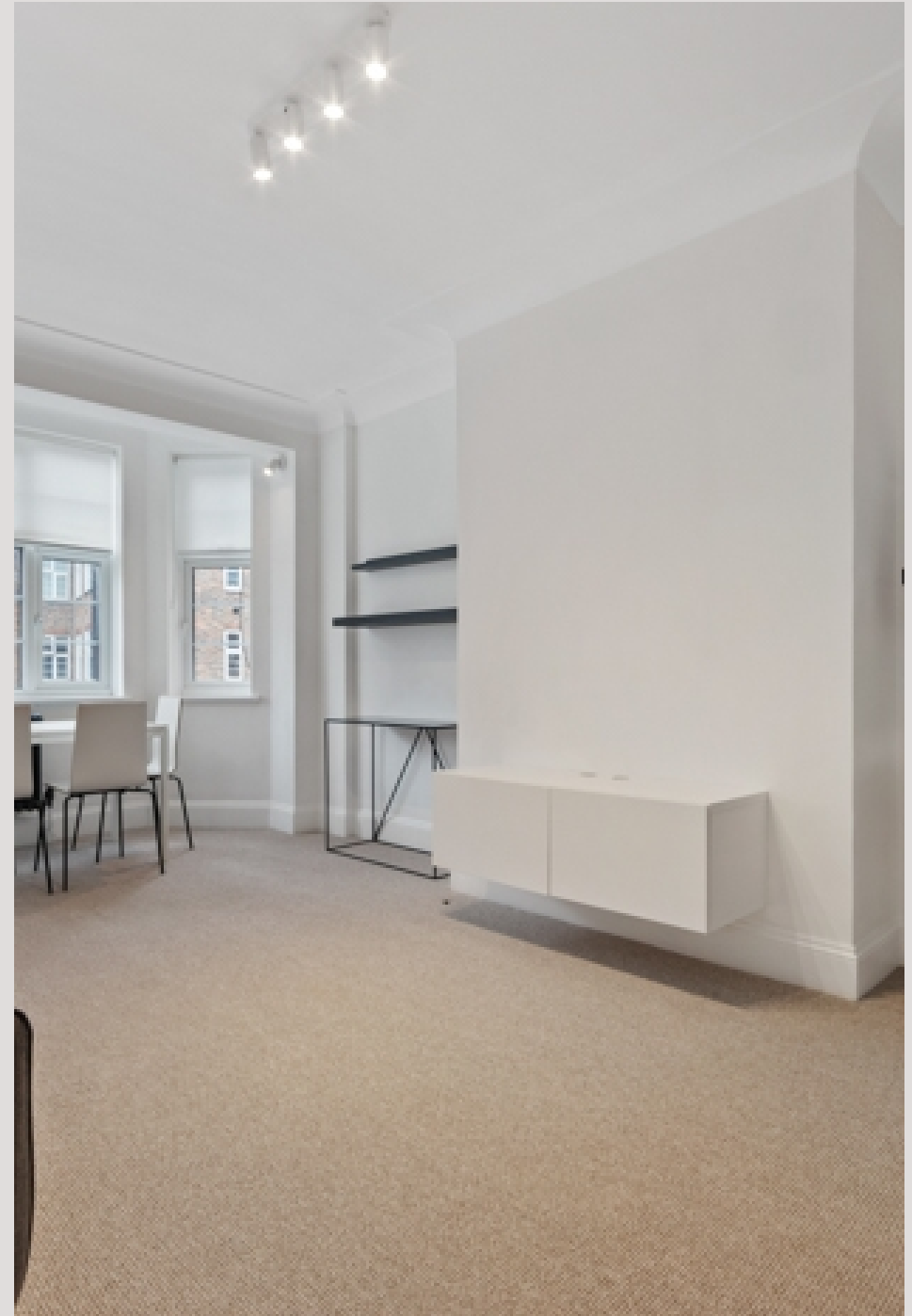
College Crescent
SWISS COTTAGE, LONDON NW3

£550



We are delighted to present this newly refurbished 1 bed apartment in this well maintained development with a porter. Benefitting from modern fittings throughout and close proximity to Swiss Cottage Station.

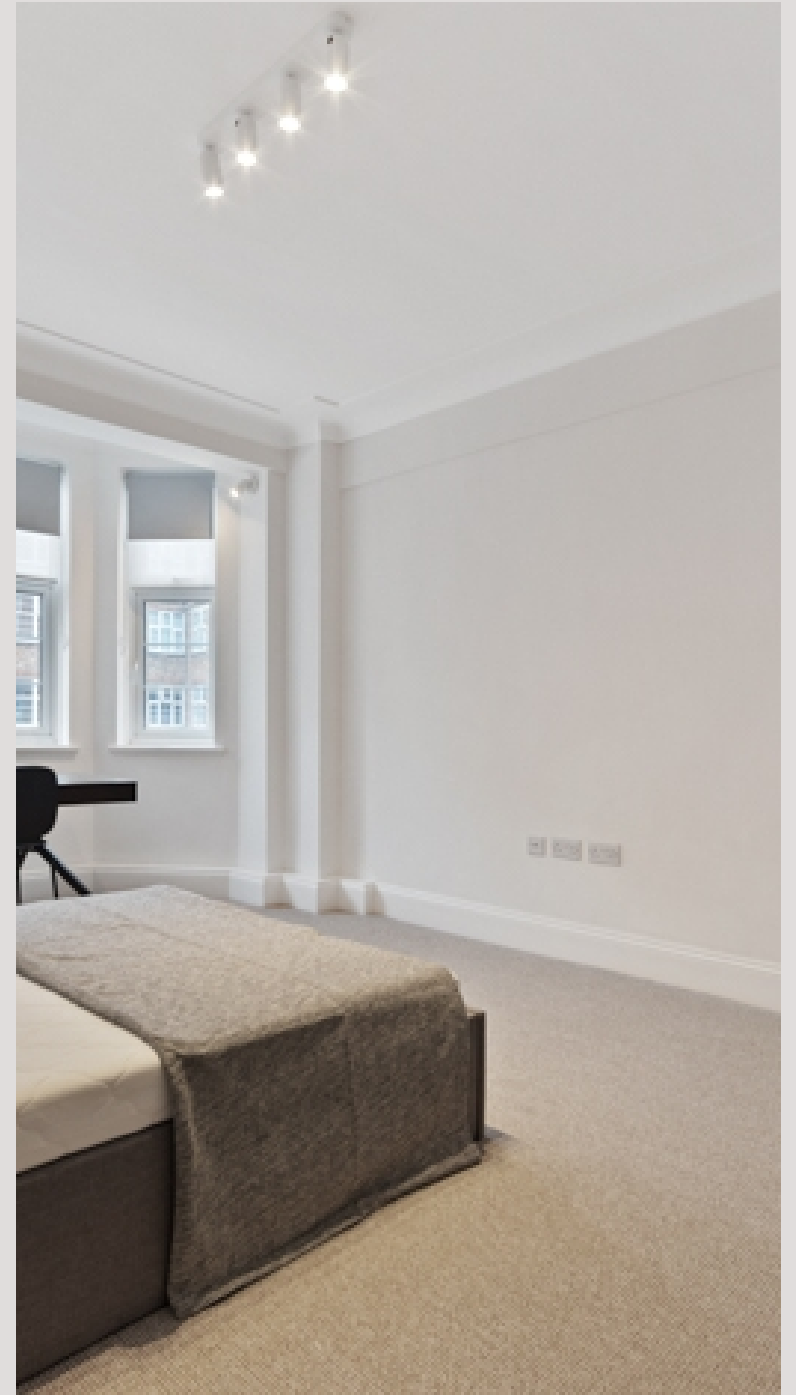
Northway's is located close to Hampstead and Belsize Park, while also benefiting from the excellent selection of amenities on Finchley Road. Available late October & offered Furnished.







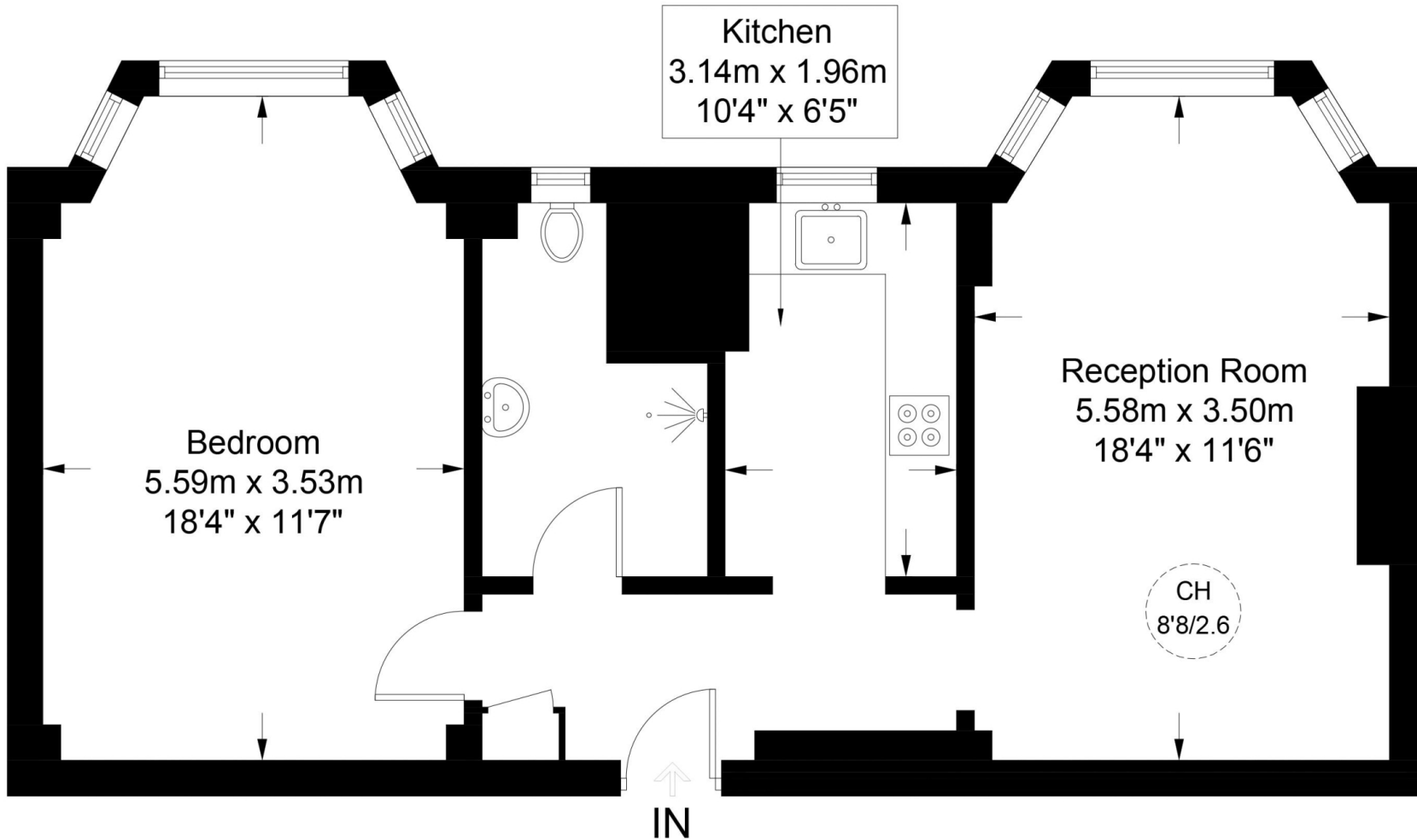






Northways, NW3

Approximate Gross Internal Area = 621 sq ft / 57.7 sq m



Third Floor

This plan is for layout guidance only. Not drawn to scale unless stated. Windows and door openings are approximate. Whilst every care is taken in the preparation of this plan, please check all dimensions, shapes and compass bearings before making any decisions reliant upon them. (ID690967)

Particulars

Property

College Crescent, Swiss Cottage, London NW3
£550

Rooms



1



1



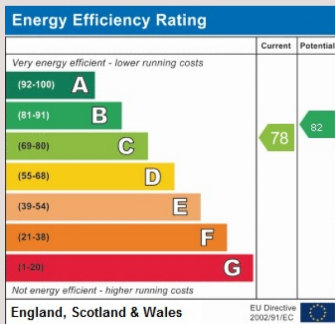
1

Features

- Heating & Hot water is included
- High Quality furniture
- Close to Primrose Hill, Regents Park and Hampstead Village
- Portered Block

Information

Council Tax



Zoe Browne

zoe.browne@vitaproperties.uk
+44 7880 277371



Scan for our website





T: +4420 7759 2199
E: enquiries@vitaproperties.uk

Disclaimer: These particulars are prepared as a general guide for prospective purchasers or tenants and do not constitute, nor constitute part of, an offer or contract. All statements, descriptions, and measurements contained herein are given in good faith and are believed to be correct at the time of printing, but any intending purchaser or tenant should not rely on them as statements or representations of fact and must satisfy themselves by inspection or otherwise as to their correctness. Floor plans and photographs are for illustrative purposes only and may not be to scale. The position and size of doors, windows, appliances, and other features are approximate. Anti-Money Laundering (AML): In line with the Money Laundering, Terrorist Financing and Transfer of Funds Regulations 2017, we are required to carry out customer due diligence checks. Buyers/tenants will be asked to provide proof of identity, address, and source of funds before a sale or rental can be agreed. Data Protection (GDPR): Personal information supplied to Vita Properties will be processed in accordance with the General Data Protection Regulation (GDPR). Your details may be retained for legitimate business purposes relating to property services. Full details of our Privacy Policy are available on request.

All rights reserved.