



Winchester Road
BELSIZE PARK, LONDON NW3

£1,800,000



Vita are delighted to offer this incredible, interior designed, newly refurbished, three bedroom triplex, set across a sprawling 1700 sq ft (approx) of luxury living space, in a beautiful converted townhouse on Winchester Road, NW3.

This immaculately presented property comprises of a stunning reception/ dining room, with classic panelled walls, large floor-to-ceiling bay windows, decorative cornicing, original feature fireplace and gorgeous oak floors. A stylish kitchen with fireplace, island counter and breakfast bar. An incredible master bedroom with excellent storage and unique gallery shower room, two further double bedrooms with some very cleverly implemented features, such as platform 'homework area' in the children's bedroom, designated study, a beautiful three-piece family bathroom, separate WC, a private decked front garden area and finally a highly sought-after roof terrace, boasting charming views.

This modern, yet classic property is located mere moments from Swiss Cottage and Belsize Park and boasts excellent access to amenities, transport links, local schools and nurseries.











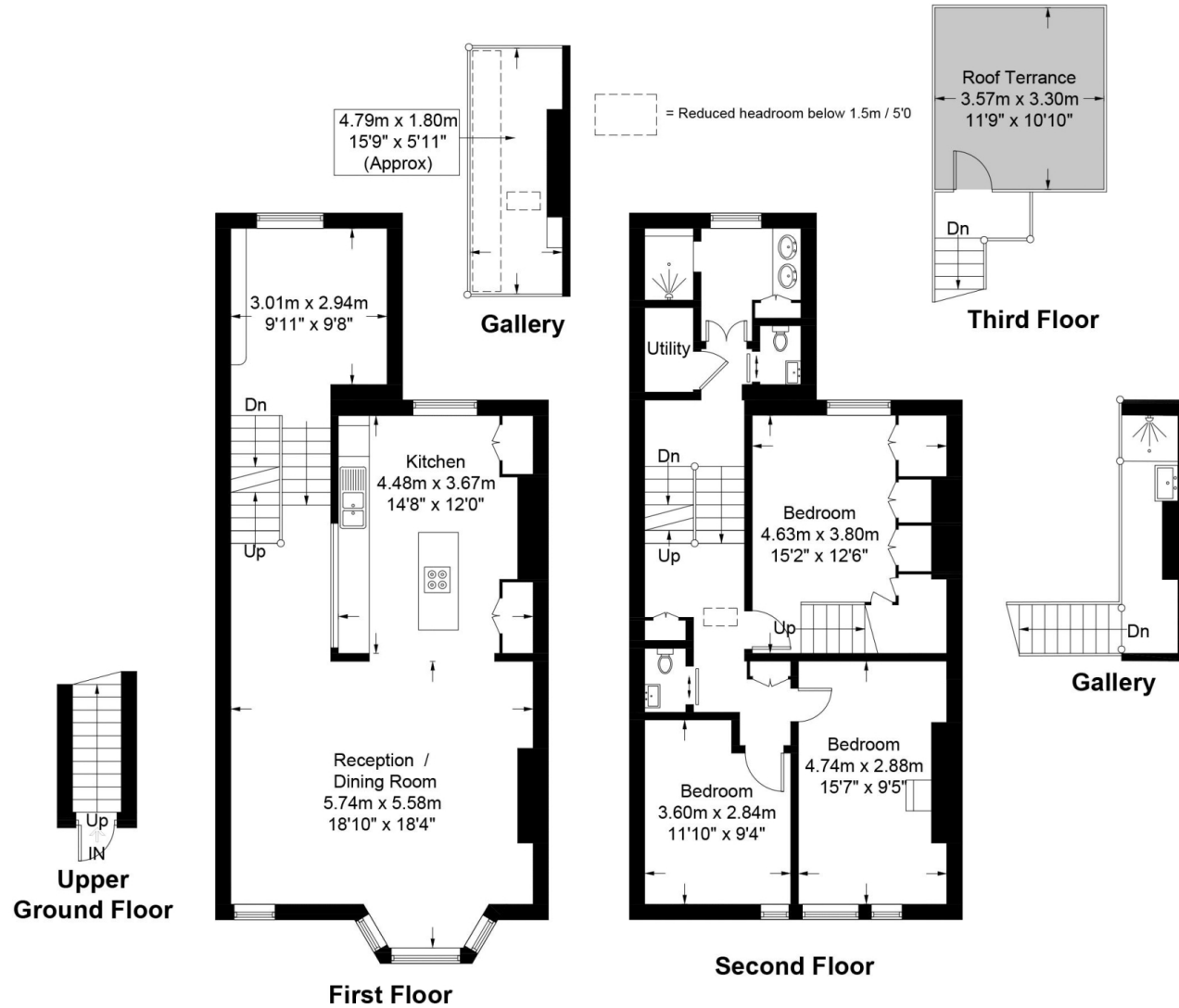
Scan for out video walkthrough





Winchester Road

Approximate Gross Internal Area = 1697 sq ft / 157.7 sq m



This plan is for layout guidance only. Not drawn to scale unless stated. Windows and door openings are approximate. Whilst every care is taken in the preparation of this plan, please check all dimensions, shapes and compass bearings before making any decisions reliant upon them. (ID590060)

Particulars

Property

Winchester Road, Belsize Park, London NW3
£1,800,000

Rooms



2



2



3

Features

- Sun Trapped Roof Terrace
- Interior Designed with Creative and Thoughtful Ideas
- Modern retaining Original Character Features
- Brand New Double Glazing Windows Throughout

Information

Council Tax



Oliver Kent

oliver.kent@vitaproperties.uk
+4477 7274 0351



Scan for our website





T: +4420 7759 2199
E: enquiries@vitaproperties.uk

Disclaimer: These particulars are prepared as a general guide for prospective purchasers or tenants and do not constitute, nor constitute part of, an offer or contract. All statements, descriptions, and measurements contained herein are given in good faith and are believed to be correct at the time of printing, but any intending purchaser or tenant should not rely on them as statements or representations of fact and must satisfy themselves by inspection or otherwise as to their correctness. Floor plans and photographs are for illustrative purposes only and may not be to scale. The position and size of doors, windows, appliances, and other features are approximate. Anti-Money Laundering (AML): In line with the Money Laundering, Terrorist Financing and Transfer of Funds Regulations 2017, we are required to carry out customer due diligence checks. Buyers/tenants will be asked to provide proof of identity, address, and source of funds before a sale or rental can be agreed. Data Protection (GDPR): Personal information supplied to Vita Properties will be processed in accordance with the General Data Protection Regulation (GDPR). Your details may be retained for legitimate business purposes relating to property services. Full details of our Privacy Policy are available on request.

All rights reserved.