

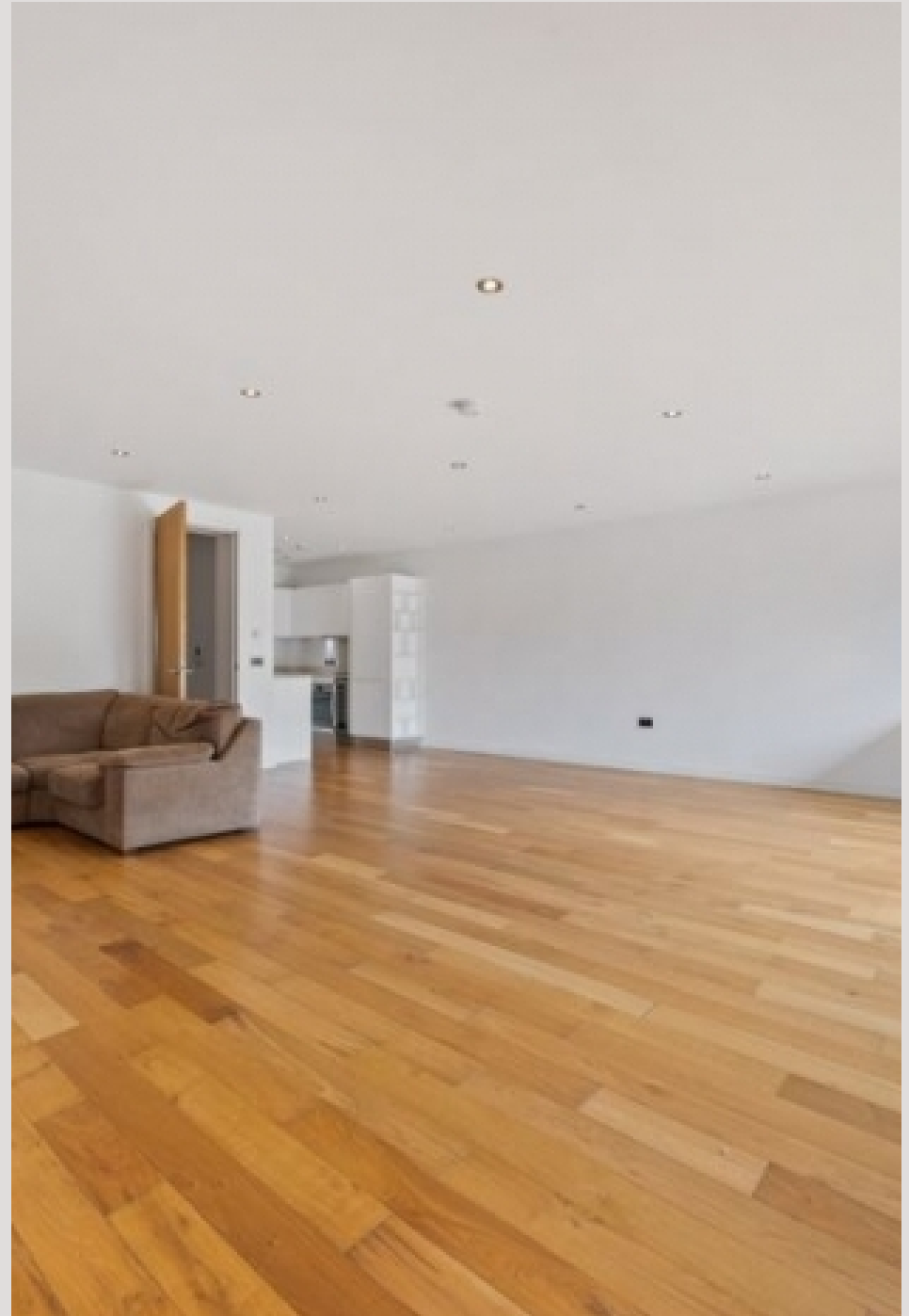


Finchley Road
HAMPSTEAD, LONDON, NW3

£1,000,000



A large two bed (1459sq ft) flat with two exceptionally sized balconies. Situated on the second floor of this characteristic development this apartment comprises of a large living room, fully-equipped kitchen, two double bedrooms and two large balconies, the first of which is accessed from the living room and the second from both bedrooms. Some of the prominent features include wooden floors with underfloor heating, wine cooler, spot lighting, stone topped worktops and built in wardrobes in the master bedroom. The Cascades is a secure development based on Finchley Road and well situated for the many local amenities.





A large two bed (1459sq ft) flat with two exceptionally sized balconies. Situated on the second floor of this characteristic development this apartment comprises of a large living room, fully-equipped kitchen, two double bedrooms and two large balconies, the first of which is accessed from the living room and the second from both bedrooms. Some of the prominent features include wooden floors with underfloor heating, wine cooler, spot lighting, stone topped worktops and built in wardrobes in the master bedroom.

The Cascades is a secure development based on Finchley Road and well situated for the many local amenities.





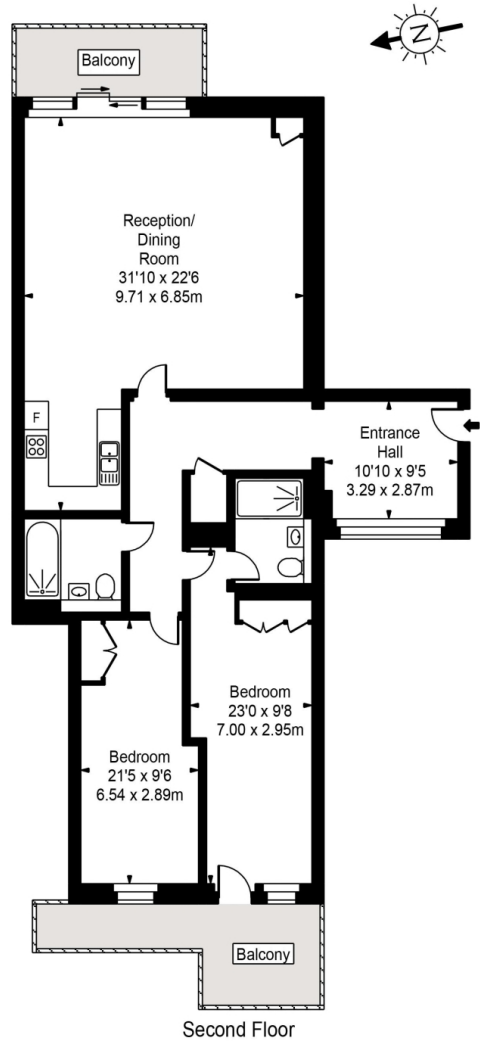




Scan for out video walkthrough



The Cascades



Approx Gross Internal Area 1459 Sq Ft - 135.52 Sq M

FOR ILLUSTRATIVE PURPOSES ONLY. NOT TO SCALE.

Whilst every attempt has been made to ensure the accuracy of the floorplan shown, all measurements, positioning, fixtures, fittings and any other data shown are an approximate interpretation for illustrative purposes only and are not to scale. No responsibility is taken for any error, omission, miss-statement or use of data shown. Floor plan by www.bestangle.co.uk

Particulars

Property

Finchley Road, Hampstead, London, NW3
£1,000,000

Rooms



1



2



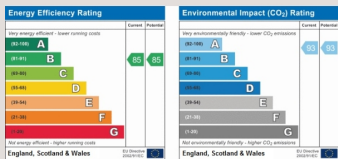
2

Features

- Two Bed, Two Bath
- Second Floor with Lift Access
- Wooden Floors with Underfloor Heating
- Stone Topped Work Surfaces

Information

Council Tax



Oliver Kent

oliver.kent@vitaproperties.uk
+4477 7274 0351



Scan for our website





T: +4420 7759 2199
E: enquiries@vitaproperties.uk

Disclaimer: These particulars are prepared as a general guide for prospective purchasers or tenants and do not constitute, nor constitute part of, an offer or contract. All statements, descriptions, and measurements contained herein are given in good faith and are believed to be correct at the time of printing, but any intending purchaser or tenant should not rely on them as statements or representations of fact and must satisfy themselves by inspection or otherwise as to their correctness. Floor plans and photographs are for illustrative purposes only and may not be to scale. The position and size of doors, windows, appliances, and other features are approximate. Anti-Money Laundering (AML): In line with the Money Laundering, Terrorist Financing and Transfer of Funds Regulations 2017, we are required to carry out customer due diligence checks. Buyers/tenants will be asked to provide proof of identity, address, and source of funds before a sale or rental can be agreed. Data Protection (GDPR): Personal information supplied to Vita Properties will be processed in accordance with the General Data Protection Regulation (GDPR). Your details may be retained for legitimate business purposes relating to property services. Full details of our Privacy Policy are available on request.

All rights reserved.