



Arkwright Mansions Finchley Road

HAMPSTEAD, LONDON NW3

£1,495,000



Presenting this bright and spacious, four-bed apartment located in this period mansion block 'Arkwright Mansions', NW3.

Situated on the fourth floor (with lift access) this delightful home comprises of an inviting, open-plan reception room, large dining room; contemporary kitchen/ breakfast room; three enormous, light-flooded bedrooms, fourth smaller double bedroom with access onto a private West-facing balcony; three-piece family bathroom with 'his & hers sinks and a guest WC. This exceptional property boasts high ceilings, multiple feature fireplaces, ample storage and a pleasing mixture of hardwood and parquet flooring throughout. Residents in Arkwright Mansions also benefit from access to lovely communal gardens.

Ideally situated just moments from Finchley Road & Frognal (Overground) and within a short walking distance to both Hampstead Station (Northern Line) and Finchley Road Underground (Jubilee, Metropolitan Line) and the plethora of nearby boutique shops, café's, restaurants and luscious green open spaces of Hampstead.





Presenting this bright and spacious, four-bed apartment located in this period mansion block 'Arkwright Mansions', NW3.

Situated on the fourth floor (with lift access) this delightful home comprises of an inviting, open-plan reception room, large dining room; contemporary kitchen/ breakfast room; three enormous, light-flooded bedrooms, fourth smaller double bedroom with access onto a private West-facing balcony; three-piece family bathroom with 'his & hers' sinks and a guest WC. This exceptional property boasts high ceilings, multiple feature fireplaces, ample storage and a pleasing mixture of hardwood and parquet flooring throughout. Residents in Arkwright Mansions also benefit from access to lovely communal gardens.

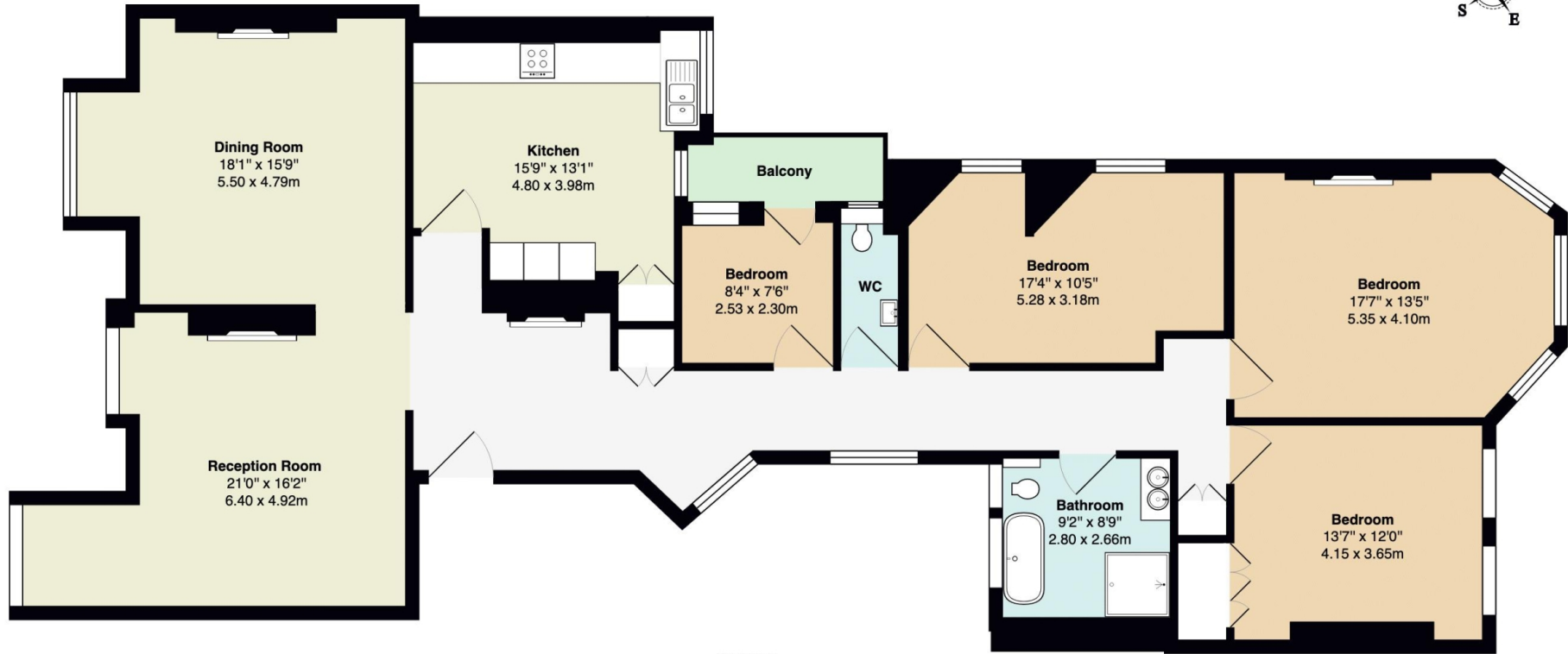


Ideally situated just moments from Finchley Road & Frognal (Overground) and within a short walking distance to both Hampstead Station (Northern Line) and Finchley Road Underground (Jubilee, Metropolitan Line) and the plethora of nearby boutique shops, café's, restaurants and luscious green open spaces of Hampstead.









4th Floor

Arkwright Mansions NW3

Gross Internal Area: 1880 ft² ... 174.7 m² (excluding balcony)

Floor plans are for identification and guideline purposes only, not to scale
Compliant RICS code of measuring practice

Particulars

Property

Arkwright Mansions Finchley Road, Hampstead, London NW3
£1,495,000

Rooms

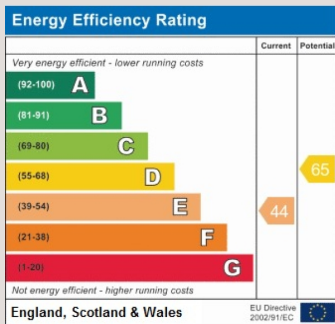


Features

- Turn Key
- 4 Bedrooms - 2 Receptions
- 4th floor with Lift
- 1880 sq ft/175 sq m

Information

Council Tax



Oliver Kent

oliver.kent@vitaproperties.uk
+4477 7274 0351



Scan for our website





T: +4420 7759 2199

E: enquiries@vitaproperties.uk

Disclaimer: These particulars are prepared as a general guide for prospective purchasers or tenants and do not constitute, nor constitute part of, an offer or contract. All statements, descriptions, and measurements contained herein are given in good faith and are believed to be correct at the time of printing, but any intending purchaser or tenant should not rely on them as statements or representations of fact and must satisfy themselves by inspection or otherwise as to their correctness. Floor plans and photographs are for illustrative purposes only and may not be to scale. The position and size of doors, windows, appliances, and other features are approximate. Anti-Money Laundering (AML): In line with the Money Laundering, Terrorist Financing and Transfer of Funds Regulations 2017, we are required to carry out customer due diligence checks. Buyers/tenants will be asked to provide proof of identity, address, and source of funds before a sale or rental can be agreed. Data Protection (GDPR): Personal information supplied to Vita Properties will be processed in accordance with the General Data Protection Regulation (GDPR). Your details may be retained for legitimate business purposes relating to property services. Full details of our Privacy Policy are available on request.

All rights reserved.