



Canfield Gardens South Hampstead

LONDON NW6

£1,350



Presenting this breath-taking, three/ four bed home, set in a characterful, detached house, on a quiet, one-way street in NW6.





This contemporary home is set across a sprawling 2044 sq ft+ of luxurious living space, and bursting with unique design elements and character features. Designed with a modern, free-flowing layout, the bottom floor consists of a large double reception room/ dining room with high ceilings, an original feature fireplace; a stunning conservatory, which floods the entire level with natural light; utility room and a large kitchen with fully integrated appliances, breakfast bar and an abundance of cabinet and counter space. Upstairs contains two exceptionally sized double bedrooms, the master offering extensive built-in wardrobe space and access to a large en-suite bathroom with a walk-in shower, and the second-largest bedroom boasting beautiful bay windows and built-in wardrobes. Finally, on this floor, you have a smaller bedroom, also with integrated storage, and a separate family bathroom. Benefiting from a large South Facing Garden which includes a lovely patio area (with orning), a grass area and finally the incredible addition of a self-contained studio apartment found at the end of







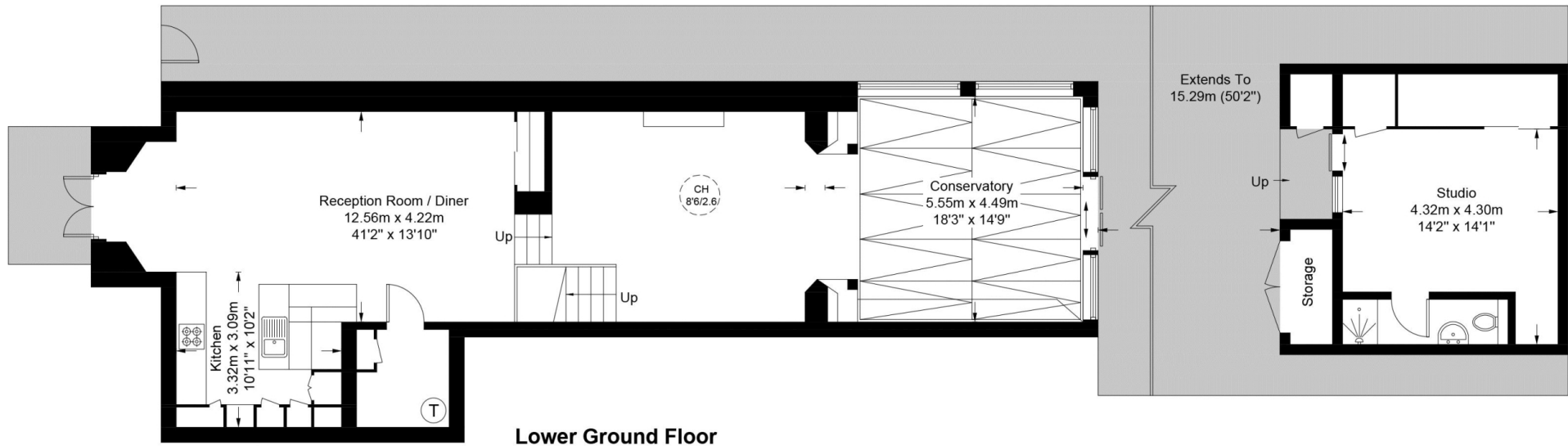
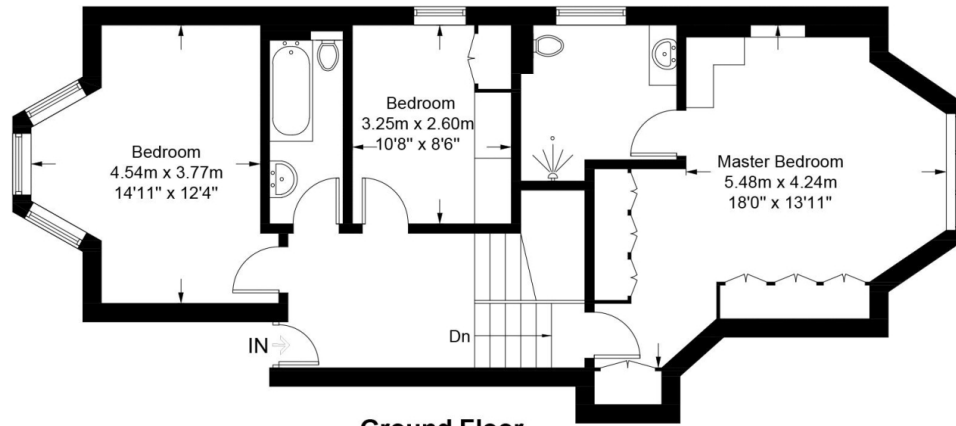
Scan for out video walkthrough



Canfield Gardens, NW6



Approximate Gross Internal Area = 1757 sq ft / 163.2 sq m
Studio = 287 sq ft / 26.7 sq m
Total = 2044 sq ft / 189.9 sq m



This plan is for layout guidance only. Not drawn to scale unless stated. Windows and door openings are approximate. Whilst every care is taken in the preparation of this plan, please check all dimensions, shapes and compass bearings before making any decisions reliant upon them. (ID769682)

Particulars

Property

Canfield Gardens South Hampstead, London NW6
£1,350

Rooms



1



2



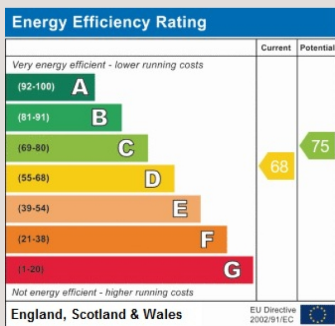
3

Features

- Quiet Location
- Ample Outdoor Space
- Self-Contained Studio Flat
- Conservatory

Information

Council Tax



Oliver Kent

oliver.kent@vitaproperties.uk
+4477 7274 0351



Scan for our website





T: +4420 7759 2199

E: enquiries@vitaproperties.uk

Disclaimer: These particulars are prepared as a general guide for prospective purchasers or tenants and do not constitute, nor constitute part of, an offer or contract. All statements, descriptions, and measurements contained herein are given in good faith and are believed to be correct at the time of printing, but any intending purchaser or tenant should not rely on them as statements or representations of fact and must satisfy themselves by inspection or otherwise as to their correctness. Floor plans and photographs are for illustrative purposes only and may not be to scale. The position and size of doors, windows, appliances, and other features are approximate. Anti-Money Laundering (AML): In line with the Money Laundering, Terrorist Financing and Transfer of Funds Regulations 2017, we are required to carry out customer due diligence checks. Buyers/tenants will be asked to provide proof of identity, address, and source of funds before a sale or rental can be agreed. Data Protection (GDPR): Personal information supplied to Vita Properties will be processed in accordance with the General Data Protection Regulation (GDPR). Your details may be retained for legitimate business purposes relating to property services. Full details of our Privacy Policy are available on request.

All rights reserved.